

Domestic violence directory

A practical guide for anyone
experiencing domestic violence
3rd Edition 2008

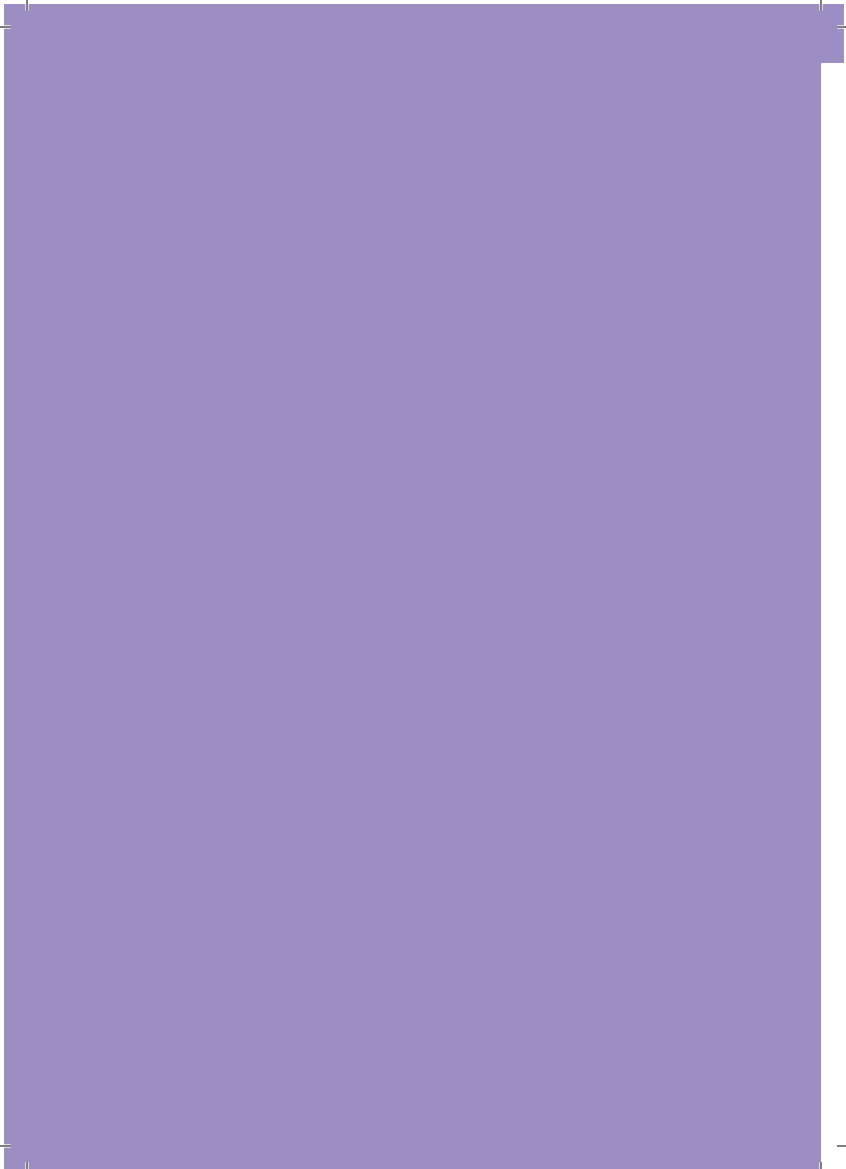
*This page can be torn off to reveal
a blank front cover.*

ealing domestic
violence
task group









Personal details

Name

Contact tel

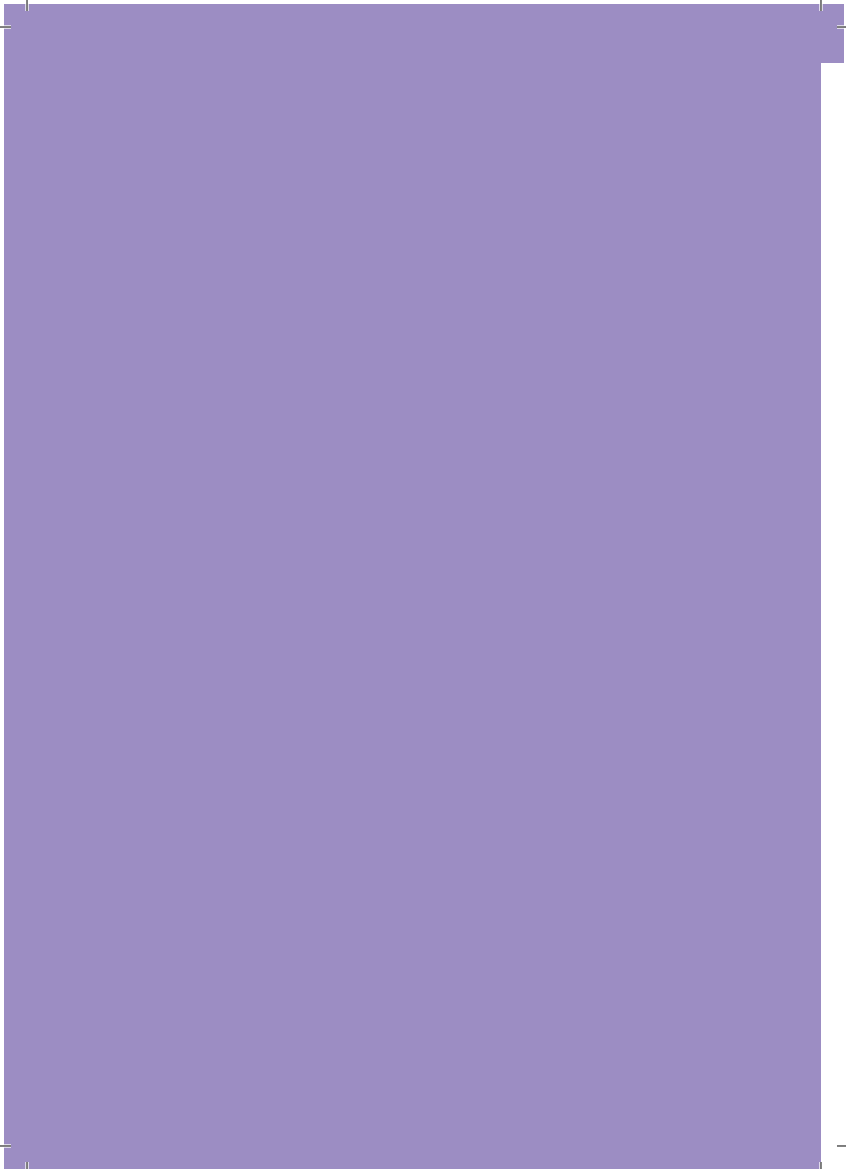
Next of kin

Contact tel

Doctor


Contact tel

In case of emergencies



Contents

- 7 **Part 1**
What is domestic violence?
Deluth's Wheel
- 10 **Part 2**
Practical steps
- 16 **Part 3**
Where you can find help
- 17 **Part 4**
Ealing Police
- 20 **Part 5**
Ealing Victim Support
- 24 **Part 6**
Ealing Council Housing
- 28 **Part 7**
Ealing Homes
- 32 **Part 8**
The law
- 36 Where to go for support and advice
- 44 Weekly diary
- 50 Incident log
- 54 Things to do
- 56 Notes



If you are suffering domestic violence, you are not alone. There are many organisations in Ealing that offer support to victims.

This guide outlines the support available and what you can do if you, or someone you know, is experiencing domestic violence.

Part 1

What is domestic violence?

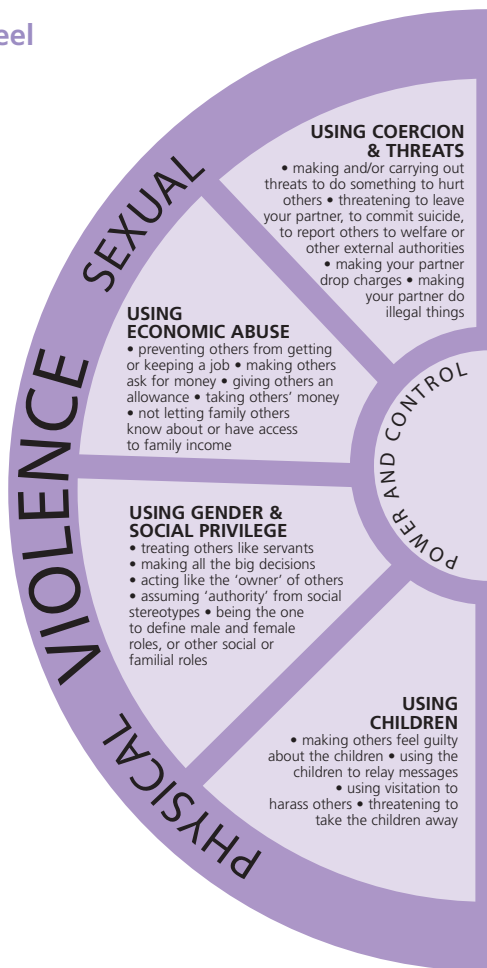
Domestic violence is a crime and is defined as any incident of threatening behaviour or abuse (physical, verbal, sexual, financial or emotional) between people who are or have been intimate or family members.

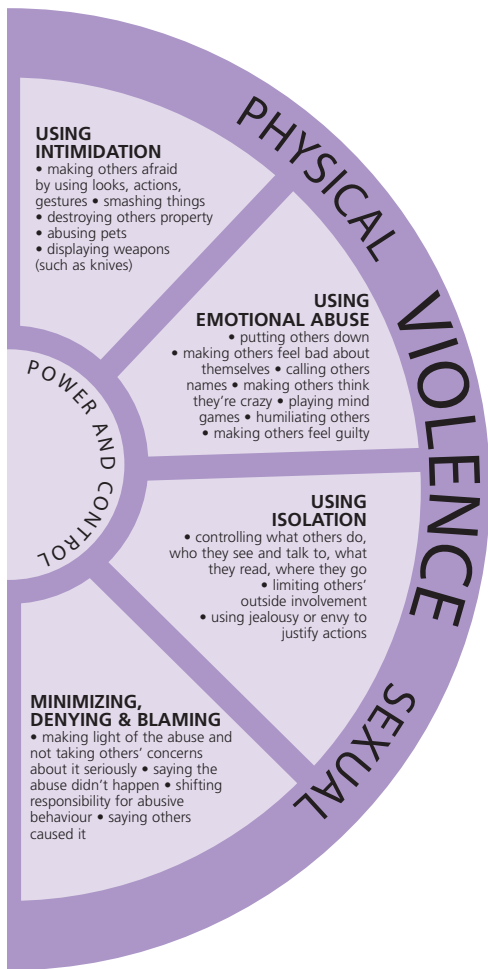
If personal relationships lead to abuse, the situation is hard to cope with. If you fear someone with whom you have had or are having a close personal relationship with, whether they live with you or not, you are entitled to support and information to help you make choices about safety.

You do not have to be in a relationship with the person to experience domestic violence. Some people continue to abuse their ex partner after a relationship has ended.

The following page has an illustration showing the different forms of domestic violence.

Deluth's Wheel





Part 2

Practical steps

This section outlines some steps that you can take to protect yourself and assists you if you make the decision to leave the relationship.

IN AN EMERGENCY CALL 999

Personal safety plan

Having a personal safety plan is essential if you or your children are suffering abuse or living in a violent home.

This personal safety plan is designed with safety in mind whether you stay in the relationship or choose to leave.

In an emergency the most important single factor is the physical safety of yourself and any children you may have. These are some steps to follow but please remember that every person's situation is different, you may need to take all or only some of these steps and not necessarily in this order.

Safety during a violent incident

- If an argument seems unavoidable, try to have it in a room or area where you can exit quickly and easily.
Try to stay away from the bathroom, kitchen, bedroom or anywhere else where weapons might be available.
- Practice how to get out of your home safely.
Identify which doors, windows, lifts or stairwell would be best.
- Have a bag packed ready and keep it at a relatives or friends home in order to leave quickly.

- Identify one or more neighbours you can tell about the violence and ask that they call the police if they hear a disturbance coming from your home.
- Devise a codeword to use with your children, family, friends and neighbours when you need them to call the police.
- Decide and plan for where you will go if you have to leave home (even if you don't think you will ever need it.)
- Use your instincts and judgment. If the situation is very dangerous, consider giving the abuser what they want to get them to calm down. You have the right to protect yourself until you are out of danger.
- Always remember – you don't deserve to be hit or threatened.

After a violent incident

- Get to a safe place.
- Call the police.
- If your partner injures you, see your doctor or attend hospital as soon as possible.
- Think about speaking to a police officer from the community safety unit.
- Consider seeking advice from a solicitor.

Preparing to leave

- Open a savings account and/or credit card in your name to start to establish or increase your independence. Think of other ways in which you can increase your independence.
- Get your own post office box. You can privately receive cheques and letters.

- Leave money, an extra set of keys, copies of important documents, medicines, clothes and sentimental items with someone you can trust so you can leave immediately.
- Determine who would be able to let you stay with them or lend you some money.
- Keep this directory and important contact numbers close at hand and keep some change or a phone card on you at all times for emergency phone calls.
- Remember – leaving an abuser is the most dangerous time. Review your safety plan as often as possible in order to plan the safest way to leave your abuser.

Safety in the home

If you do not live with the abuser or he or she has left the home, it is important that you take some or all of the following steps to stay safe.

- Consult a solicitor to see if you are able to change the locks on your doors. Buy additional locks and safety devices to secure your windows. Ealing has a Sanctuary Project which can provide a range of security measures to make your home secure. This is a free scheme and referrals can be made by the police, domestic violence advocacy worker, social worker and housing officer.
- Discuss a safety plan with your children for when you are not with them.
- Inform the children's school, nursery etc about who has permission to pick up your children.
- Inform neighbours and landlord that your partner no longer lives with you and that they should call the police if they see them near your home.
- Get in touch with the local Police community safety unit so they can ensure a speedy response to an emergency call from your address.

Safety with a non-molestation/occupation order (injunction)

The local courts can grant a non-molestation or occupation order, commonly known as an injunction.

This legally orders the abuser not to contact you in an aggressive way either directly or through another person.

It also means they have to stay away from your home.

Your solicitor can help you put an order in place. See page 32 for further information.

- Keep your injunction with you at all times.
- Call the police if your partner breaks the injunction.
- If you have a solicitor let them know if your partner breaks the injunction.
- Think of alternative ways of keeping safe if the police do not respond right away.
- Inform family, friends, neighbours, your doctor or health care worker and the people you work with that you have an injunction.

Safety at work and in public

- Decide who at work to inform of your situation. This should include office or building security. Provide a picture of your abuser if possible.
- Arrange to have an answering machine, caller ID or someone you trust to screen calls if possible.
- Devise a safety plan for when you leave work. Have someone escort you to your car, bus or train and wait with you until you are safely on your way. Use a variety of routes to go home if possible. Think about what you would do if something happened during your journey.

Your safety and emotional health

- If you are thinking of returning to a potentially abusive situation, discuss an alternative plan with someone you trust.
- If you have to communicate with your partner, determine the safest way to do so.
- Have positive thoughts about yourself and be assertive with others about your needs. Read books, articles and poems to help you feel stronger.
- Decide who you can talk to freely and openly to give you the support you need.
- Look into joining a group or counselling to gain support from others and to build confidence and self worth.
- If you are worried about staying at home alone ask a friend or relative to stay with you.

Safety checklist

- Find out what support is available locally (drop in and community groups, counselling or advice sessions.)
- Keep a diary of all domestic violence incidents.
- Find somewhere you can quickly and easily use a phone.
- Make a list of telephone numbers you can carry with you in case of an emergency. Include friends, relatives, the police community safety unit, local police, Refuge- London Violence Helpline. Even well known numbers can be forgotten in a panic. A variety of numbers are listed at the back of this directory where there is also space to write some of your own contacts.
- Try to save some money for bus, train or taxi fares.
- Have an extra set of keys for your home and car.
- Keep keys, money and sets of clothes for yourself, and your children, packed in a bag and stored at a friend or relative's house.

- Leave when the abuser is not around.
- Pack your legal and financial papers, marriage and birth certificates, court orders, national health cards, passports, driving licence, benefit books, address books, bank books, cheque books and credit cards.
- Take your personal possessions which have sentimental value.
- Take favourite toys for the children.
- Take clothing for at least several days.
- Take any medicine that you might need.

If you feel able have a chat with the Police Community Safety Unit, call **020 8246 9617**, and ask them to make a note of the call.

Part 3

Where you can find help

Getting help and support if you are experiencing domestic violence can be easier than you may first think. Its important that you break the silence and speak to someone you trust – a friend, relative or any of these people:

- Ealing Police
- Victim Support
- Ealing Homes
- Ealing Council
- Your health visitor if you have a child less than five years of age
- Your GP
- Your GP's practice nurse
- A nurse or doctor if you are in hospital
- Your social worker or any duty social worker
- Your Employee Assistance provider if you work for an employer who offers this service to employees

There is a full list of contact numbers at the back of this directory.

Part 4

Ealing Police

The police deal with adult victims of abuse where violence occurs, within the household or between family members, between partners and ex partners.

Domestic violence is a crime and the police deal with it as a serious matter. They treat all calls as emergencies where there is an imminent threat to the victim or their family.

There are a number of offences that suspects can be charged with in relation to domestic violence. These include:

- Common assault
- Actual Bodily Harm
- Grievous Bodily Harm
- Indecent assault
- Rape
- Harassment
- Criminal damage

The police will:

- Take a full written statement from the victim.
- Talk to the victim separately from the suspect and offer advice.
- Record all incidents of domestic violence against the victim.
- Refer the victim, to other agencies where help can be obtained.
- The Metropolitan Police has a “positive arrest policy”. This means that where there are reasonable grounds to justify arrest, the perpetrator shall be arrested immediately.


- Arrange for immediate medical aid for the victim should they need it.
- Photograph of the victim's injuries.
- Liaise with the Crown Prosecution Service to decide what action should be taken against the perpetrator.

Where there is no evidence of a criminal offence, arrest may still be necessary to prevent a breach of the peace. If the police do charge the suspect with an offence, it is the Crown Prosecution Service who decides whether or not to prosecute that person.

If the suspect is arrested and charged with an offence, he or she may be released on bail. The bail conditions will usually state that the perpetrator is to keep away from the victim. The police should inform the victim:

- When the perpetrator has been released and any bail conditions set.
- Whether they have been charged.
- Of any action taken, including forthcoming court dates.
- About support available for their court appearance.

It is important that the victim makes a note of the crime number and the officer in charge of their case. This information will be useful for the victim when they see their local housing officer, or solicitor.



In Ealing there is a Police Community Safety Unit staffed by specially trained officers. They can provide the victim with confidential advice, assistance and the options available. The police can organise an interpreter if necessary. Officers from the unit are not trained counsellors, and do not undertake reconciliation work, however they can refer the victim for such help if requested.

IN AN EMERGENCY DIAL 999

Ealing Borough Police Community Safety Unit
Southall Police Station
67 High Street
Southall
UB1 3HG
Tel 020 8246 9617

Part 5

Ealing Victim Support

Ealing Victim Support operates a domestic violence advocacy service, to assist and support you to find the strength and determination needed to step away from an abusive relationship. They can offer you and your children emotional support and practical information about domestic violence in a confidential and safe environment. They will liaise very closely with all the relevant voluntary and statutory agencies and organisations to ensure that your emotional, health, housing, legal, and financial needs are met. The advocates deliver a non discriminatory service to female and male victims of domestic violence who wish to rebuild their lives free from fear and intimidation.

For more information contact Ealing Victim Support:

Philippa Grindal

Tel 020 8574 4001

Fax 020 8571 1955

email philippa.grindal@vslondon.org

Available between 8.30am - 4.30pm Monday to Friday

Ealing Domestic Violence Court

The court hears criminal cases involving domestic violence. Victim Support and the Witness Service work to ensure that victims, witnesses and their family/friends are supported before, during and after they attend the court. The service is free, confidential and offers both emotional and practical support.

For further information please call

Domestic Violence Court Co-ordinator

020 8571 9611 or 07758347325

Ealing Women's Survivors Group (EWSG) at Ealing Abbey Counseling Service (EAC)

The group offers a safe and confidential group where women can gain support and improve their lives. The group is run by Ealing Abbey Counseling Service and the Women's Only Service at CAPE.

Call EWSG mobile 07842 117916 or EAC 020 8998 3361

Women's Survivors Group – Northolt

The group offers a safe and confidential group with a crèche. It is run by Sure Start and the Women's Survivors Group.

Call EWSG on 07842 117916

Children and young people

Children living in families where domestic violence occurs may suffer serious emotional and / or physical abuse.

Their home will not feel like a safe and secure place.

Their relationships with other young people and adults may not be positive now and in the future. They may be aware of violence occurring even if they do not see it and may pick up the tension, fear and distress in their parent.

Each child's experience of domestic violence will be different, however, some children develop challenging and difficult behaviour whereas others may appear to be coping but are internalising their feelings. They also often love the perpetrator but do not like his/her behaviour, which is an additional tension for them.

Children and young people may benefit from expressing, exploring and learning about their feelings, which will help them cope with their emotional life. They have a voice and need to be listened to. Parents need to understand the damaging effects of domestic violence on their children and act accordingly. However the effects on children are shown to lessen once they feel safe from abuse and control and have had time and space to express their feelings without fear.

Support for children and young people

Ealing Victim Support operates a children's / young people's domestic violence advocacy service offering sessions for children/young people aged 5 to 18 years of age. Children and young people attend with their parent or carer's consent.

Referrals to the unit may be made by any agency or you can refer yourself by letter, e-mail, phone or fax. Children living at home where the perpetrator is still in residence are offered up to six sessions on a one to one basis with a trained children's domestic violence worker to explore their fears and feelings on a one to one basis in a confidential and safe setting. Where the perpetrator is neither in residence nor any further threat to the family, up to twelve therapeutic one to one sessions are available.

The project has a designated children's room at Hanwell Police Station where children can attend with parent or carer's consent, where they can explore their fears and feelings on a one-to-one basis with a trained Children's Domestic Violence Advocacy

For more information about support offered to children and young people contact:

Patricia Chapman
Children's Domestic Violence Advocacy Unit
Ealing Victim Support
Community Safety Unit
Southall Police Station
67 High Street
Southall
UB11 3HG

Tel 020 8571 5911
Fax 020 8571 1955
email pat.chapman@vslondon.org

Domestic Violence Intervention Project (DVIP)

DVIP offer free one to one psychological therapy/counseling for children and young people affected by domestic violence living in Ealing.

The project works with children/young people aged 3 to 17 years of age affected by domestic violence included those who have witnessed abuse, been directly abused, or have other presenting issues where domestic violence is a component. Weekly sessions are provided from 6 months to a year. The service is flexible and holistic and is tailored to the individual child's needs.

DVIP are located at Stephens Place Children's Centre (nearest Tube Station: Ravenscourt Park/Hammersmith). There is a base in Ealing. Referrals are accepted from all agencies. Referrals are also accepted from parents and self referrals from young people 12+.

To refer call Khyati (Chartered Psychologist) on **020 8741 8020**

Part 6

Getting Help from Ealing Council

Ealing Council Community Safety Team has a dedicated Domestic Violence Officer. They are able to provide confidential advice and support to victims of domestic violence and forced marriage. Advice can also be provided in relation to Honour based crimes.. Information can be given in Punjabi, Urdu and Hindi.

Please contact Uzma Butt Domestic Violence Caseworker

020 8825 9024

buttu@ealing.gov.uk

Getting Help from Ealing Council Housing

Who should I contact?

If you believe that you cannot stay safely in your home, you can get advice and help from Ealing Council.

If you are already a council tenant, you should first contact Ealing Homes (see below). If you are a Housing Association tenant, your first contact should be your housing officer at the Housing Association.

If you are a tenant of any other landlord, or you own your home, or are living in someone else's home, you should contact the Council by telephoning **020 8825 8888** or by going in person to


Customer Services

Perceval House

14-16 Uxbridge Road

Ealing

W5 2HL



The opening hours are 9.00am - 5.00pm Monday to Friday. It is best to come as early as possible on the day. Please note that interviews are not carried out on Wednesday mornings.

Outside of normal office hours and during the night the Council provides an emergency housing service by telephone on **020 8825 9498**

What can Ealing Council do?

The council is committed to preventing people from becoming homeless because homelessness is a harmful and stressful experience.

If you are experiencing domestic violence, the council will consider whether you could avoid becoming homeless if your home could be made safe. Ealing Sanctuary Project is a scheme, which provides free security measures like new locks, stronger doors or alarms, to help people to remain living in their own home and to feel safe there. Your housing officer will discuss this with you, to see if you could benefit from it.

If you can't stay with friends or family, the council might be able to place you in emergency accommodation, while works are carried out. You might be able to claim Housing Benefit for rent on your current home AND on the emergency accommodation because your intention is to move back home.

If you cannot safely remain in, or return to your home, the council might be able to help you to avoid becoming homeless, by finding you another home with a private landlord. You won't have to pay a deposit or rent in advance for these homes.

Homelessness legislation

If you can't be helped in any of these ways, the council will assess your case to see whether it has a duty to find housing for you under the homelessness legislation. It is important to be aware that not everyone qualifies to be housed. The legislation is quite complex but in general the council must consider the following:

- Are you **'eligible'**?
This is about immigration status and residence in the UK. Some people from abroad or who have been living outside of the UK are not eligible for public funds or housing.
- Are you **'homeless'**?
People who have nowhere to live are homeless and so are people who cannot gain entry to their home, and those whose home is unreasonable to occupy, for example because they would be likely to suffer domestic violence there.
- Do you have a **'priority need'** for housing?
Only people who are homeless AND have a priority need qualify for the council to find housing for them. However if you are homeless but DO NOT have a priority need the Council must provide you with advice and assistance to help you to find housing for yourself. The Councils Single Homeless Team may also be able to find emergency housing for you and your application may be referred to them.

People who are pregnant, or who have dependent children living with them have a priority need. So do 16-17 year-olds and certain young people over 17 who have been in care as teenagers. If you aren't in one of these groups, you will only be considered to have a priority need if you are vulnerable. A person is vulnerable if their circumstances mean they are less able to fend for themselves than an ordinary homeless person would be. A person can be vulnerable if they are disabled or have a mental or physical illness or if their circumstances have affected their ability to care for themselves.

- Did you become homeless **'intentionally'**?
If someone's homelessness is a result of their own actions, (eg because they got into rent arrears) they may be considered intentionally homeless and the Council may have no duty to find housing for them.
- Do you have a **'local connection'**?
Sometimes a person who has no connection with the borough they apply to can be referred back to the area where their connection lies. However, a person cannot be referred back to a borough where they are at risk of violence.

After the council has considered all of these matters, they must give a written decision about the outcome of a homelessness application. If the decision goes against the applicant, it must give full reasons and must tell the person how they can ask for it to be reviewed by a manager. If the decision is that the Council accepts a duty to find housing for the applicant, they will be able to bid for Council properties, with a relatively high priority, through LOCATA the Choice-based Letting Scheme. If they are not successful after a time, they will receive one suitable offer of either a Council /Housing Association property or a private sector leased property.

Part 7

Ealing Homes and Catalyst Housing Association

Ealing Homes manages all housing on behalf of Ealing Council. Ealing Homes takes all reports of domestic violence seriously and can support tenants experiencing domestic violence in a variety of ways. Ealing Homes considers domestic violence as category 'A' anti social behaviour. If a domestic violence incident is reported to Ealing Homes, officers will carry out an interview with the victim within 24 hours and work with them to decide what support would best suit them.

Ealing Homes will liaise with the following key agencies:

- Police
- Ealing Council social services
- Ealing Council mental health team
- Victim Support
- Community Safety Unit
- Other Ealing Council services

Reporting domestic violence to Ealing Homes

You can report all incidents of domestic violence to anti social behaviour officers based within Ealing Homes' two area offices depending on where you live in the borough.

Each office has four anti social behaviour officers and a team manager.

Ealing Homes Reception

Business Centre

Perceval House

14 - 16 Uxbridge Road

W5 2HL

Tel 020 8825 8400

**West Area Office
301 Ruislip Road
Greenford, Middlesex
London UB6 9SE
Tel 020 8825 8600**

Each area has its own separate hotline, which is open between 9-00am – 5.00pm. Outside these hours messages can be left for the teams to attend to during working hours.

What will Ealing Homes do?

Ealing Homes will investigate all reported cases of domestic violence. Anti social behaviour officers will conduct interviews with victims by telephone, in our offices or at your home and record all incidents and interviews held. (If English is not your first language, translators will be arranged.)

Ealing Homes will then complete an action plan for each case, outlining:

- What action will be taken with the victim's consent.
- What contact, if any, will be made with the perpetrator.
- That they will contact the police if required.
- Refer the case with the victim's consent to the Domestic Violence Advocacy Unit in Hanwell.
- Refer the case with the victim's consent to other agencies for further assistance and support.
- What transfer options are available.
- How your home can be made safer with additional security measures?
- That the victim is to seek legal advice.
- That the victim is to complete diary forms which we will give to them, in order to record any further incidents.

Options available

Once interviewed and investigated there are several options Ealing Homes can consider depending on the strength of the evidence and your wishes. These could include:

- In serious cases, agreeing to move victims to a new home under a management transfer or urgent transfer.
- Taking injunctive action against perpetrator. See page 32 for further information.
- Monitoring the case monthly, maintaining monthly contact and reviewing the case after six months.
- Working with the victim to revising the action plan.

You will be informed of action taken in all instances

Tenancy Support Team

The Tenancy Support Team provide tenancy support to vulnerable clients that are resident in Ealing Council accommodation.

The support offered includes assistance with claiming for housing and welfare benefits, assisting with re-housing, dealing with health issues, getting into rehabilitation for substance misuse issues and getting into education, training and employment.

To access the service contact

Tenancy Support Team
Ealing Homes
301 Ruislip Road
Greenford
UB6 9SE

Catalyst housing Association

Catalyst Housing Association have a comprehensive policy which allows officers to support victims of domestic violence who are Catalyst Housing Association tenants. They will provide additional security measures such as enhanced locks, solid doors, London Bars and a safe room if this is appropriate. Where the victim cannot remain in their home they can approve a management transfer, allowing the person to move to alternative accommodation as an emergency transfer. This could take some time depending on where the person wishes to relocate.

Please contact the Customer Services Call center **020 8832 3298**

Emergency accommodation

Refuges provide safe, emergency, temporary accommodation for women and children who need protection from violence. They offer support both from the workers in the refuge and other women staying there.

The addresses of refuges are strictly confidential. This is essential if women and children are to remain safe.

If you need to leave your home and go to a place of safety, you can contact a refuge via the National Domestic Violence Helpline **0808 2000 247**.

For pet owners

The Dogs Trust Freedom Project provides free foster care for dogs belonging to people living in the Greater London area who are experiencing domestic violence. They work in partnership with Women's Aid and Refuge. They also work together with the Cats Protection League who will arrange care for cats.

Dogs Trust Freedom Project

PO Box 50208

London

Tel 0800 298 9199

Part 8

The law

If you are experiencing domestic violence but do not wish to pursue the criminal case against your abuser, you can still seek the protection of the civil courts to ensure your safety by applying for an injunction against the person who is assaulting, molesting or harassing you. These court orders usually cover a period of 12 months and can carry with them powers of arrest – this means that should the abuser breach the order then he or she can be arrested.

Legal Aid

A person who is in receipt of income support or income based job seekers allowance can automatically be granted legal aid if they apply to a franchised solicitor to deal with the application for an injunction and arrange for representation in court. A person earning a low wage may also be eligible for legal aid.

For those who are not eligible for legal aid but do not have the funds to pay for the solicitor and the barrister's fees the alternative way to secure an injunction is to go to the county court and collect the relevant forms. The domestic violence advocacy worker will offer assistance with the completion of the forms. When these are returned to the court a payment is due. Once the court order is granted the only other payment due is the charge made by the process server. (The person who hands the order to the defendant.)

What if my immigration status is insecure?

If you are subject to immigration control, for example, because you only have limited leave to stay in the UK on the basis of marriage or relationship, your immigration status and the breakdown of your marriage or relationship may affect your ability to obtain benefits and permanent residence.

However, if you have been granted limited leave to stay in the UK on the basis of your marriage or relationship and you are subjected to domestic violence by your sponsor or his family, you may be able to make an independent application for leave to remain in the UK.

This is because the immigration rules provide for the granting of indefinite leave to remain to victims of domestic violence who were originally admitted to the UK as the spouse, unmarried partner, same sex partner or civil partner of a person present and settled in the UK. (The sponsor) This is called the domestic violence rule.

The victim must be able to demonstrate that the relationship was caused to permanently breakdown before the end of the initial two-year period of leave as a result of domestic violence. This rule applies if the sponsor is the perpetrator or if the abuse is at the hands of persons other than the sponsor as long as it leads to the breakdown of the marriage or relationship (for example, if your sponsor fails to protect you from abuse from members of his or her extended family).

The evidence you will normally need to provide to be eligible under the domestic violence rule is:

- An injunction, non-molestation order or other protection order made against your sponsor (other than an ex-parte or interim order); or
- A relevant conviction against the sponsor; or
Full details of a relevant police caution issued to your sponsor.

It is advisable to obtain legal advice before making any application to remain in the UK. Always use a reputable and a properly qualified immigration solicitor or advisor for legal advice and assistance and remember, even if you have an insecure immigration status, you may be entitled to public funding (legal aid) from the Legal Services Commission.

If possible, always make your applications to remain in the UK before your current leave expires, as this improves your chances of obtaining leave to remain and your ability to appeal against a refusal.

Housing and benefits

If you are subject to immigration control then you will normally have more limited access to or be ineligible for benefits and housing. In these circumstances, seek advice and assistance from an agency. You may be able to obtain housing and financial assistance by approaching:

- A refuge, which may provide you with temporary safe accommodation.
- Ealing Council social services department who will assess whether they can help you, if you are pregnant have dependant children or are extremely vulnerable in some way.
- The National Asylum Support Service (NASS) if you have made an asylum or certain human rights claim.

Ask NASS to place you in a refuge or a safe location.

NASS has its own guidelines on domestic violence, which it should follow when deciding where to place you. You should not give up your NASS accommodation without seeking advice first unless it is

an emergency. This is because NASS has strict guidelines as to the circumstances in which you can be transferred or re-admitted into emergency NASS accommodation or provided with support.

Immigration Advisory Service **020 8607 6570**

Forced Marriage Protection Order

A Forced Marriage Protection Order can help if you are

- Being forced into marriage or
- You are already in a forced marriage

A Forced Marriage protection Order is a legal document issued by a judge which is designed to protect you according to your individual circumstances. It contains legally binding conditions and directions that change the behaviour of a person or persons trying to force a person into marriage.

The aim of the order is to protect the person who has been or is being forced into marriage. Orders can be made in an emergency to protect someone immediately. If someone disobeys the order of the court they can be arrested and brought back to the court. The court has power to send them to prison for up to two years if it finds them in contempt of court.

For more information about making a forced marriage protection order you can obtain details from any county court or from the **HMCS website <http://www.hmcourts-service.gov.uk>**

If you don't want to apply for an order contact the Forced Marriage Unit on its confidential helpline **020 7008 0151**. They provide practical support and information for people at risk of being forced into marriage and those already forced into marriage.

Where to go for support and advice

Throughout the borough of Ealing and London in general, there are a variety of organisations and general advice centres that provide a range of support for victims of domestic violence. Some of the organisations listed here can refer the victim to other support services, which may assist with their situation.

Asian Child Protection Helpline

Tel 0800 096 7719

Broken Rainbow

Advice and support for lesbian, gay, bisexual and transgender people who experience domestic violence.

Tel 0845 260 4460

Chance for Children Trust

We provide therapeutic arts programmes for trouble and young people from birth to 25 years. We also provide training programmes for welfare staff and volunteers.

Chance for Children Trust

PO Box 54194

Child Line

Tel 0800 1111

Connexions

For children aged 13-19 and children with disabilities aged to 25. Offers a one to one support and advice on education, training, employment and personal issues.

**Tel 020 8579 1633 (Ealing) or
020 8571 4615 (Southall)**

Domestic Violence Intervention Project (DVIP)

To refer call Khyati (Chartered Psychologist) on **020 8741 8020**

Drug and Alcohol Helpline

A free and confidential drug and alcohol information service for the Ealing area.

Tel 0800 195 8100

Ealing Borough Victim Support – Domestic Violence

Adult Advocacy Unit

Tel 020 8574 4001

Ealing Borough Victim Support – Children's

Domestic Violence Advocacy Unit

Tel 020 8571 5911

Ealing Police Community Safety Unit

Ensures the safety and support of domestic violence victims, arrests and prosecutes perpetrators.

Tel 020 8246 9617

Ealing Youth & Counselling & information

Services (EYCIS)

Offers a free and confidential counselling service to young people in the borough between the ages of 14 – 25.

Tel 020 8992 8182

ealingycis@ealing.gov.uk

Ealing Hestia Women's Aid

Services to women and children fleeing domestic violence. Also offers emergency temporary housing.

Outreach service for women in the community needing advice, support, information and advocacy due to domestic violence.

Tel 020 8991 1007 (office hours) emergency out of hours

Tel 07961 340483

www.ewa.org.uk

Ealing Council Housing Resource Centre

Tel 020 8825 8888

Ealing Council Social Services

Tel 020 8825 8000

Ealing Women's Survivors Group

Barbara Shears 07842 117916

Kurdish Women's Association

Provides a variety of services for Kurdish women and their families, running advice sessions, workshops and mother and toddler groups.

Tel 020 8993 7572 (Friday evenings only)

Hill House Outreach Service

07968 888025

Immigration Advice Service

Tel 020 8607 6570

Law for All

Advice on problems with housing, welfare benefits, debt, family, employment, immigration, education, mental health and consumer matters.

Tel 020 8600 3100

9.30am-5.30pm, Monday-Friday

London Crimestoppers

Tel 0800 555 111

London Lesbian & Gay Switchboard

Tel 020 7837 7324

Mind in Ealing & Hounslow

Provides help with social activities and preparation for work. Also provides hospital advocates, a befriending scheme and supported housing and young people's peer support helpline.

Tel 020 8992 0303

info@mind-eh.org

National Domestic Violence Helpline

Tel 0808 2000 247

National Domestic Violence Centre

Specialises in helping victims of domestic violence obtain non-molestation and other orders (injunctions) from court to prevent further abuse. A free and confidential service.

Tel 0800 970 20 70

EACH

Specialist counselling and support service for primarily BME women experiencing domestic violence and abuse

Telephone: 020 8579 4529

Refugee & Asylum Advice Group

Provides refugees and asylum seekers in the London Borough of Ealing with information and advice.

Volunteers can provide one to one support for Somali, Amharic, Arabic and Italian language speakers.

Tel 020 8993 1237 (9.30am to 4.30pm Mon-Fri)

Relate

Offer relationship and family counselling for individuals, couples and families. Also provide education and training for adults or young people and family mediation for separating or divorcing couples to help sort out issues on children and families

Tel 020 8427 8694

Respect

Provide information and advice to help you stop your abusive or violent behaviour towards your partner.

Tel 0845 122 8609

Samaritans

Tel 020 8560 2345

Somali Women's Network

Promotes Somali women's education, health and empowerment.

Provides support with parenting issues.

Can provide volunteer interpreters.

Tel 07956 554449

somaliwomennet@yahoo.co.uk

Southall Black Sisters

Advice, resource and campaign centre providing emergency work e.g. accessing refuge space, as well as casework around domestic violence, housing, matrimonial, immigration, children, forced marriages and support group activities.

Tel 020 8571 9595

southallblacksisters@btconnect.com

Sweetman Burke & Sinker Solicitors

Provides victims of domestic violence specialist advice in family disputes.

Tel 020 8840 2572 or 020 8567 8379

Tasha Foundation

Provides confidential information, support, counseling and holistic health care services to individuals affected by mental health difficulties and substance misuse.

Tel 020 8571 9981

enquiries@tasha-foundation.org.uk

Willow Team Midwives

Provide a case-loading model of care for women who need extra support in the antenatal, intra-partum and postnatal period. This means women have continuity of carer and a named midwife.

Willow Team Midwives

Ealing Hospital

Maternity Unit

Uxbridge Road

UB1 3HW

Some useful websites

Advice, support and counselling services

www.womensaid.org.uk

www.rapecrisis.co.uk

Black Minority Ethnic Services

www.asyllumaid.org.uk

Immigration Advisory Service

www.iasuk.org

www.refugeecouncil.org.uk

Children

www.childline.org.uk

www.nspcc.org.uk

www.barnardos.org.uk

www.gingerbread.org.uk (for lone parent families)

Criminal Injuries Compensation Scheme

www.cica.gov.uk

General

www.bbc.co.uk/hittinghome

www.bbc.co.uk/relationships/domestic_violence/index.htm

www.lat.org.uk/about/projects/gldvp.html

London Action Trust domestic violence project.

www.womenandequalityunit/domestic_violence/index.htm

Health

www.rcm.org.uk

Royal College of Midwives-domestic abuse in pregnancy

www.dh.gov.uk

Housing

www.shelter.org.uk

Perpetrators

www.dvip.org

Programmes for perpetrators of domestic violence

Substance misuse

www.talktofrank.com

Weekly Diary

Sunday

Monday

Tuesday

Wednesday

Thursday

Friday

Saturday

Weekly Diary

Sunday

Monday

Tuesday

Wednesday

Thursday

Friday

Saturday

Weekly Diary

Sunday

Monday

Tuesday

Wednesday

Thursday

Friday

Saturday

Weekly Diary

Sunday

Monday

Tuesday

Wednesday

Thursday

Friday

Saturday

Weekly Diary

Sunday

Monday

Tuesday

Wednesday

Thursday

Friday

Saturday

Weekly Diary

Sunday

Monday

Tuesday

Wednesday

Thursday

Friday

Saturday

In an emergency ring 999

Ealing Police Community Safety Unit **020 8246 9617**

Ealing Domestic Violence Advocacy Service **0208 574 4001**

Southall Black Sisters **020 8571 9595**

Refuge London Violence Helpline **0808 2000 247**

ealing
domestic
violence
task group



In an emergency ring 999

Ealing Police Community Safety Unit **020 8246 9617**

Ealing Domestic Violence Advocacy Service **0208 574 4001**

Southall Black Sisters **020 8571 9595**

Refuge London Violence Helpline **0808 2000 247**

**ealing domestic
Violence
task group**







