

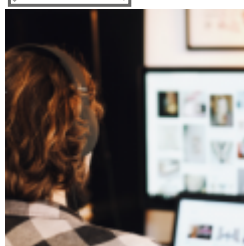
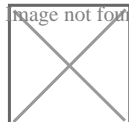


Ending FGM/C impact report

20 Feb 2025

Read the impact report of the ending female genital mutilation/ cutting (FGM/C) project 2023-24 in Ealing. View the services for schools (S4S) offer for 2025-26.

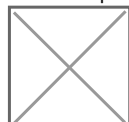
Image not found or type unknown



Making your school stand out from the crowd - 13 March webinar

20 Feb 2025

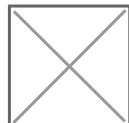
A bite sized insight into school marketing. Join us for this 45 minute webinar that will explore both online and offline marketing, with takeaways you can introduce quickly to make an immediate impact on your school profile. Book via CPD online.



Primary school paid bursary payments

20 Feb 2025

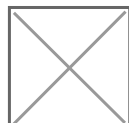
Available with Teach West London - Offering talented individuals the opportunity to receive a school paid bursary if they train to teach at your school on a fee-funded route. Attend an online briefing to find out more.



KS4 school reports 2024

19 Feb 2025

Your school's KS4/GCSE report 2023-24 is now available to download from your EGfL school reports page

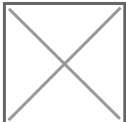




Inclusive recruitment application forms for teacher and support staff posts

17 Feb 2025

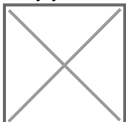
Schools can promote a fair and unbiased shortlist process by using an application form that is in 2 parts. Updated forms and guidance to support this process.



Updated school grant payments third quarter 2024-25

14 Feb 2025

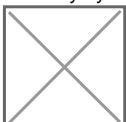
Early years and high needs payments have been updated. Log in to view.



Children missing out on education (CMOE) reviews reminder

14 Feb 2025

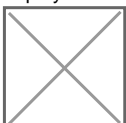
Reminder for all schools who have pupils on reduced timetables and/or attending an alternative provision to complete any outstanding reviews of their plan on Gateway by Friday 28 February 2025.



Product recall: Conen motorised display wall mount (SCETAW)

14 Feb 2025

Risk of crushing/impact injury may arise due to detachment from the wall and the equipment falling forwards. Any school using these mounts for flat panel display screens should contact the manufacturer for further advice.

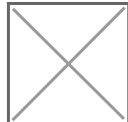




#### ELP assistant and deputy headteacher conference

13 Feb 2025

Feedback on the residential conference that took place 23-24 January 2025 at Burnham Beeches Hotel.



#### Spirals of enquiry- new ELP peer enquiry review with Spirals handbook

13 Feb 2025

The peer enquiry and review with Spirals handbook 2024-25 is now available to view and download. This links the peer enquiry review with the spirals of enquiry process.

