

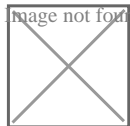


Summer holiday cycle training courses for children

26 Jun 2025

Courses are available at Gifford Primary School in Northolt and Three Bridges Primary School in Southall.

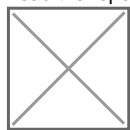
Image not found or type unknown



Social, emotional, and mental health (SEMH) provision report

26 Jun 2025

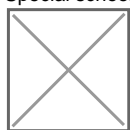
Read the report following a review of social, emotional, and mental health (SEMH) provision in Ealing. Get in touch if you wish to take part in future workshops



Special schools - June EHCP planning list reports

25 Jun 2025

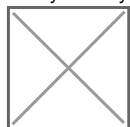
Special schools can now view their school reports for EHCP planning lists (June) and EHCP students.



NAHT Ealing branch annual conference on positive parental engagement

25 Jun 2025

This year, your conference will be investigating best practice in fostering relationships and engaging with parents and families. Ealing Golf Club, Perivale on Friday 11 July. Book via Eventbrite. Last chance to book.



Early help assessment and plan (EHAP) training

24 Jun 2025

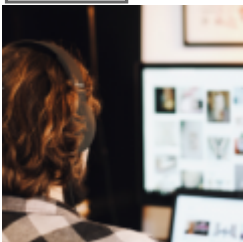
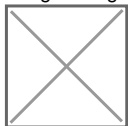
Suitable for health and education professionals / practitioners and those involved in family support work from voluntary and community services. Takes place at Perceval House Ealing W5 2HL, from 10am-2.30pm. Next available dates 2 July and 16 Sept



Read the latest SEN bulletin

24 Jun 2025

Features occupational therapy and SLT tips, upcoming SENCO training and networks, CMOE, health improvement, EBSA webinar, attendance data, safeguarding conversation hub, upcoming CPD on preparing for Sept 2025, SEND research support



DfE research project to explore parental complaints

24 Jun 2025

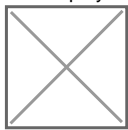
Join the debate between 30 June and 7 July 2025. Participate as much or as little as you would like, at times that suit you. Pol.is, the online debate tool will be used. Parents, governors and staff are encouraged to get involved.



ELP's level 2 careers fair 2025 a success!

23 Jun 2025

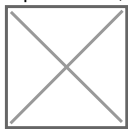
Amazing turnout at this years fair at Trailfinders in Ealing. The fair was nothing short of spectacular, featuring 10 exhibitors from colleges, training providers, and employers, all eager to share what they could offer.



ELP traded services evaluations 2025

23 Jun 2025

Your feedback is needed on the following traded services: Behaviour and inclusion, CPD SLA programme, Ealing music service, governor support, health improvement, school partnerships and enrichment, school data, workforce support.





KS2 assessment data: Upload to the primary assessment gateway

20 Jun 2025

Primary schools must upload their teacher assessments to the primary assessment gateway by Friday 27 June. This is to ensure your school pupils have a complete KS2 attainment profile.

