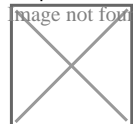




Free spring term workshops in Richmond Park

21 Nov 2024

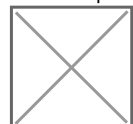
The Holly Lodge Education Centre in Richmond Park is offering a range of nature inspired and historical workshops for mainstream schools KS1 and 2 and bespoke sensory sessions for children with special educational needs and disabilities.



SEN assessment service (SENAS) updates

20 Nov 2024

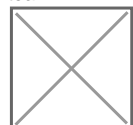
SENAS team updates, caseload allocations, relocating, improvement work on descriptor levels, admissions and transition from special schools and ARPs, EHCP co-production meetings



Early years statutory framework (EYFS) support for schools and training programme 2024-2025

19 Nov 2024

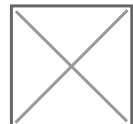
Overview of support for schools, including a four-tier offer of support. The Ealing Early Years Quality Partnership's training builds CPD for you and your whole team.

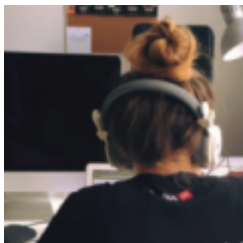


Early years budget grant

18 Nov 2024

Early years budget grant (EYBG) supports providers who are delivering early years entitlements (3-4 year old funding) with continued raising costs. Payments should be with providers within the next 10 working days.

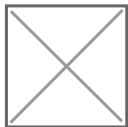




Governor training this term - Don't miss out!

18 Nov 2024

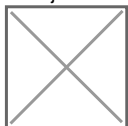
Some places still available for our evening training for governors: Includes health and safety for school governors, An inspector calls! Preparing for Ofsted and more. Share with your governing board. Bookings via CPD online.



Opportunity - Artists in Residence

18 Nov 2024

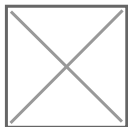
Read about and find out how to apply for this funded programme which offers primary and SEND schools across London the opportunity to have an expert artist join their school during the summer term. Apply by 11 December 2024.



3D printers in schools and colleges

18 Nov 2024

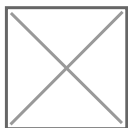
Schools should refer to the CLEAPPS document '3D printing in schools and colleges - Managing the risks' to ensure pupils and staff are kept safe.



Primary outreach programme lead supporting scientific enquiry in primary schools

18 Nov 2024

ELP and Teach West London are looking to recruit to this post. Closing date Friday 22 November.

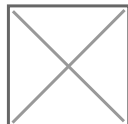




Review of primary science curriculum knowledge

18 Nov 2024

We ask all primary science leads to complete a short survey on science curriculum knowledge. Help prepare pupils for success at KS3. Collaboration between ELP and Teach West London.



Enter the Big Green Ideas competition – Win £1,000!

14 Nov 2024

Don't miss this incredible opportunity for your school to win £1,000 towards an eco project. Submit a 1-minute video showcasing your idea by 10 January 2025. Open to all primary, high and special schools in Ealing.

