

IMPORTANT NOTE: Capita SIMS has made this document available in Microsoft® Word format to enable you to edit the information supplied herein. Capita SIMS cannot be held responsible for any changes, errors or omissions resulting from the subsequent editing of this supplied document.

Producing the School Census Autumn 2018 Return (Nursery schools) handbook, applicable to 7.182 onwards

English Nursery Schools
Applicable to 7.182 onwards

C | Contents

| | |
|---|-----------|
| 01 Introduction | 1 |
| Overview | 1 |
| How has the School Census Autumn Return Changed since Last Year? | 1 |
| Steps to Producing the School Census Return..... | 2 |
| Where to Find More Information..... | 3 |
| 02 Preparing for the School Census Autumn Return | 5 |
| Setting Permissions | 5 |
| What Version of SIMS is Required?..... | 6 |
| Preparing Data for the School Census Return | 6 |
| 03 Producing the School Census Autumn Return | 9 |
| Creating a New School Census Return | 9 |
| Configuring the Census Folder | 10 |
| Specifying the Security Message for Reports | 11 |
| Editing Census Details | 12 |
| Calculating All Details | 12 |
| Editing School Information | 13 |
| Information for Academies | 14 |
| Editing Early Years..... | 15 |
| Recording Early Years | 17 |
| Using the Status to determine if Hours at Setting or Funded Hours are recorded | 19 |
| Editing Pupils with Top-Up Funding | 19 |
| Editing Pupil Post Looked After Arrangements | 21 |
| 04 Completing the School Census Autumn Return | 25 |
| Creating and Validating a School Census Return..... | 25 |
| Resolving Validation Errors and Checking Queries | 26 |
| Producing Detail Reports | 29 |
| Generating Detail Reports..... | 31 |
| Printing a Report from your Web Browser | 32 |
| Transferring Report Data to a Spreadsheet..... | 33 |
| Deleting Temporary Web Browser Files | 33 |
| Deleting the cache in Internet Explorer 10 | 33 |
| Deleting the cache in Internet Explorer 8 and 9..... | 33 |
| Producing the Summary Report | 34 |
| Generating the Summary Report..... | 34 |
| Editing an Unauthorised Return | 35 |

| | |
|--|-----------|
| Authorising the Return | 35 |
| Submitting the Return | 38 |
| Retrieving Authorised Census Return Files | 38 |
| Copying a Return | 40 |
| Deleting an Unauthorised Return..... | 41 |
| Index | 43 |

01 | Introduction

| | |
|---|----------|
| Overview..... | 1 |
| How has the School Census Autumn Return Changed since Last Year? | 1 |
| Steps to Producing the School Census Return..... | 1 |
| Where to Find More Information..... | 3 |

Overview

This handbook provides the information needed by Nursery schools in England to complete the School Census Autumn 2018 Return, which this year takes place on Thursday 4 October.

The School Census Autumn Return is required to be completed by maintained Nursery schools, Primary schools, Middle schools, Secondary schools, All-Through schools, Special schools, Pupil Referral Units (PRUs), City Technology Colleges (CTCs) and Academies (including free schools) in England. Non-maintained Special schools are also required to submit the return.

Currently, there are three School Census returns each year (i.e. Spring, Summer and Autumn), which collect detailed information about school characteristics and pupil details. Different data is collected depending on which return is being prepared, and your school phase.

A list of items collected from Nursery schools in England for the School Census Autumn 2018 is available in a later section of this handbook.

NOTE: The contents of the graphics (dates, names, panel numbers, etc.) are examples only of what you might expect to see when using SIMS to produce the School Census Return.



Additional Resources:

Preparing for the School Census Autumn 2018 Return handbook

How has the School Census Autumn Return Changed since Last Year?

Changes to the School Census Autumn Return include the following:

- Census Date: 04/10/2018
- Free School Meals collected from 18/05/2018 to 04/10/2018

Changes to Data Items Collected

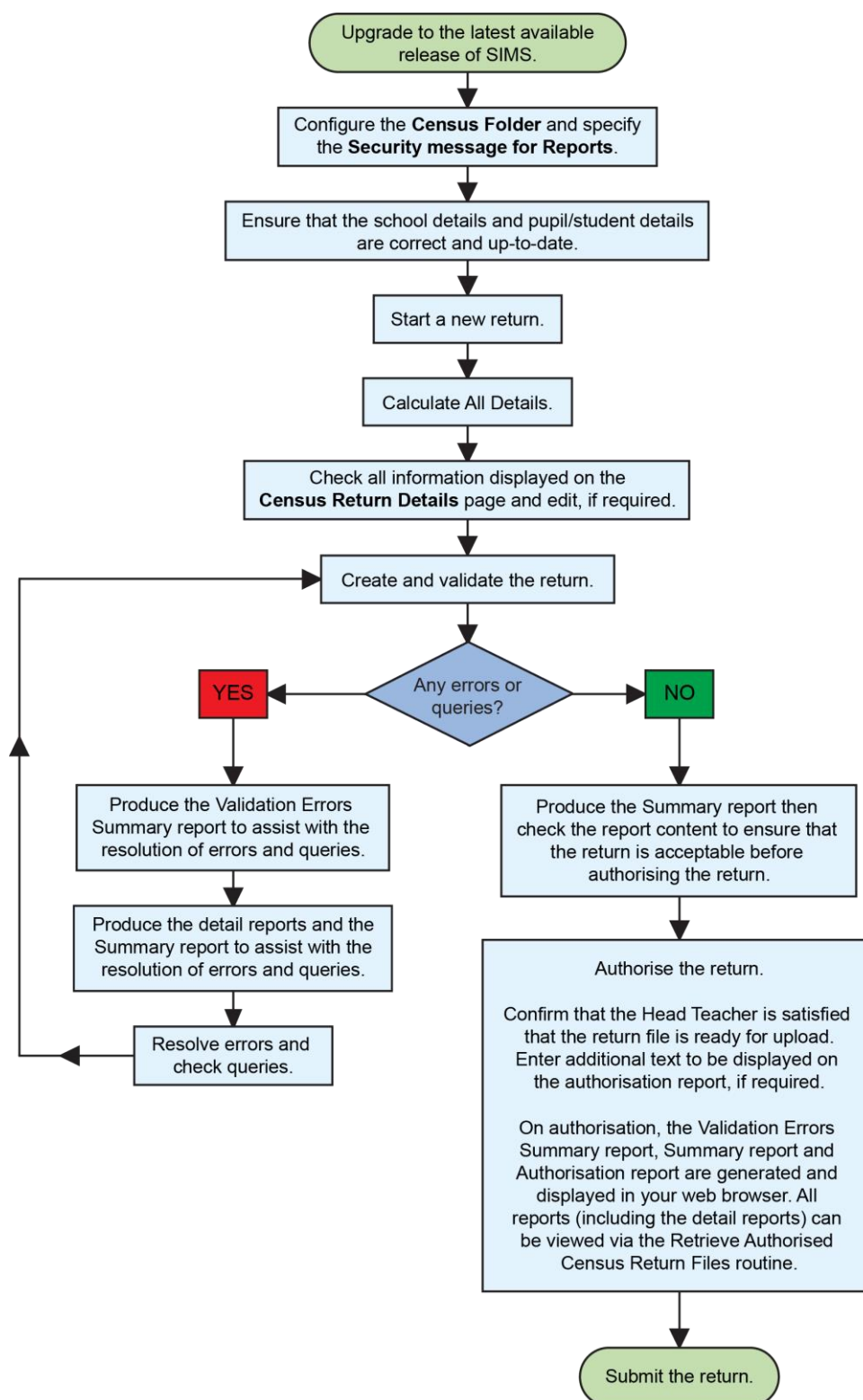
The Service Children in Education indicator is now collected for all three School Census returns and is applicable to all pupil/students and school phases.

The DfE no longer require the following data items to be collected for any School Census return:

- Pupil/student Nationality
- Pupil/student Country of Birth.

Steps to Producing the School Census Return

The process of producing the School Census can be separated into a number of steps, some of which might need to be repeated in order to eliminate validation errors and queries.



Where to Find More Information

Online help can be accessed by pressing **F1** or clicking the applicable **Help** button in SIMS.

A wide range of documentation is available from the SIMS **Documentation Centre**, including handbooks, quick reference sheets and tutorials. Click the **Documentation** button (located on the top right-hand side of the SIMS **Home Page**), select the required category and then select the document you require. Alternatively, use the **Search** facility to locate the required document.

Documentation is also available from the My Account website (<https://myaccount.capita-cs.co.uk>).

1. Enter the required text in the **Search** field to display a list of documents that match the search criteria.
2. To refine the search further, click **Documents** and then select the required **Document type**, **File type** and/or **Date** range (click **Show more** to view additional options, if required).

Alternatively, click **SIMS Publications** (located in the **Popular Searches** list) to display a list of all SIMS publications.

The search results are displayed automatically.

Tips for using the My Account Search Facility

Here are some key tips for using the search facility in My Account. For additional explanations, please refer to the My Account website.

NOTE: You no longer need to use + / - / "" when searching.

- Cut down on the amount of words that you type in the search field and only use key words, e.g. instead of typing `student showing as a contact search` for the word `contact`.
- Use the **Product Type** filter to refine results further.
- Use the advanced filters located on the left-hand side of the **Search results** page.

Additional Information

In addition to this handbook, a preparation guide that outlines how to prepare your data for the School Census, together with an Errors and Resolutions document that provides suggestions on how to resolve any validation errors or queries, are also available.

To access the School Census documents, please search for `CENSUS18` in the SIMS **Documentation Centre** or My Account.

01 | Introduction

02 | Preparing for the School Census Autumn Return

| | |
|---|---|
| Setting Permissions | 5 |
| What Version of SIMS is Required? | 6 |
| Preparing Data for the School Census Return | 6 |

Setting Permissions

The following permissions are applicable to users who deal with returns.

Producing the Return

To produce the return, you must be a member of the Returns Manager user group in System Manager.

Editing and Preparing Data

Users who edit and prepare data must have permissions to access additional areas of SIMS, e.g. pupil details, school details, etc. These users must be a member of any of the following user groups in System Manager:

- Administration Assistant
- Admissions Officer
- School Administrator.

Importing Revised Files

The Import Fileset functionality enables updates to the Validation Errors Summary and the Summary report (derived from files supplied by the Statutory Body), and detail reports (provided by SIMS), to be imported into SIMS between SIMS releases.

To use the Import Fileset functionality (via **Tools | Setups | Import Fileset**), you must be a member of any of the following user groups in System Manager:

- Returns Manager
- System Manager.

For more information about the Import Fileset functionality, please refer to the applicable preparation guide, available via the **Documentation** button on the SIMS **Home Page** or the My Account website (<https://myaccount.capita-cs.co.uk>).

Where to find More Information about Permissions

Please contact your System Administrator/Manager if you are not sure whether you have the required permissions. For more information, please refer to the *Managing SIMS Users, Groups and Databases* handbook.

An Excel spreadsheet describing the numerous permissions available in SIMS is available on the My Account website (<https://myaccount.capita-cs.co.uk>).

To find the spreadsheet, search for <sims version> sims permissions, e.g. 7.182 sims permissions.

What Version of SIMS is Required?

To run the return, you must have the SIMS 2018 Summer Release (7.182) or later installed.

To check which version of SIMS is installed, open SIMS and then select **Help | About SIMS**. A dialog similar to the one shown in the following graphic is displayed.

The version should read 7.182 or later.



Preparing Data for the School Census Return

Before beginning the process of producing the return, it is advisable to spend time ensuring that all school level and pupil level information is present and accurate in SIMS. For example, ensure that school details are correct, all new pupils have been added to SIMS, all leavers have been recorded and where applicable all exclusions have been recorded, etc.

The following information is collected from Nursery schools for the School Census Autumn 2018 Return.

School Level Data

Characteristics: LA number, DfE establishment number, school name, school phase, school type, highest national curriculum year, lowest national curriculum year, intake type, governance, school email address and school telephone number.

Pupil Level Data

- Pupil Identifiers: UPN, former UPN, surname, forename, middle names, former surname, preferred surname, date of birth and gender.
- Characteristics:
 - first language
 - post looked after arrangements
 - top-up funding indicator, funded free entitlement hours, extended entitlement childcare hours, 30 hour code, disability access fund indicator and hours at setting
 - service children in education indicator
 - school dinner taken (applicable to schools with pupils in Reception, Year 1 and Year 2)

- free school meal eligibility (18/05/2018 to 04/10/2018): start date, end date and UK country in which the eligibility applies.
- Status: enrolment status, date of entry, part-time indicator, boarder indicator and actual national curriculum year group.
- Special Educational Needs: SEN provision, member of SEN unit (sometimes called special class) indicator and member of resourced provision indicator.
- Home Information: Pupil's home address, unique property reference number (UPRN).

For more information and instructions on all of the preparations that need to be carried out before the census return is produced, please refer to the appropriate *Preparing for the School Census Autumn 2018* guide.

The preparation guide, together with other useful School Census documentation, is available from the SIMS **Documentation Centre** (accessed via the **Documentation** button, which is located on the top right-hand side of the SIMS **Home Page**) and on the My Account website (<https://myaccount.capita-cs.co.uk>).

To access the School Census documents, please search for CENSUS18 in the SIMS **Documentation Centre** or My Account.

03 | Producing the School Census Autumn Return

| | |
|---|----|
| Creating a New School Census Return | 9 |
| Configuring the Census Folder | 10 |
| Specifying the Security Message for Reports | 11 |
| Editing Census Details..... | 12 |
| Editing School Information | 13 |
| Editing Early Years..... | 15 |
| Editing Pupils with Top-Up Funding | 19 |
| Editing Pupil Post Looked After Arrangements..... | 21 |

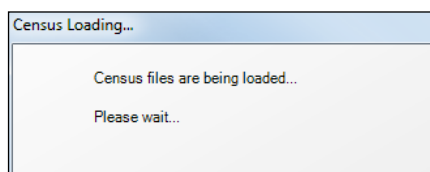
Creating a New School Census Return

Before creating a new return, ensure that all pupil and school information is present and accurate in SIMS.

It is possible to create more than one return, enabling you to carry out dry runs so that you can check what data needs to be added or updated. Any unwanted returns can be deleted (providing they have not been authorised).

Data is collected for all pupils on-roll on the census day (04/10/2018).

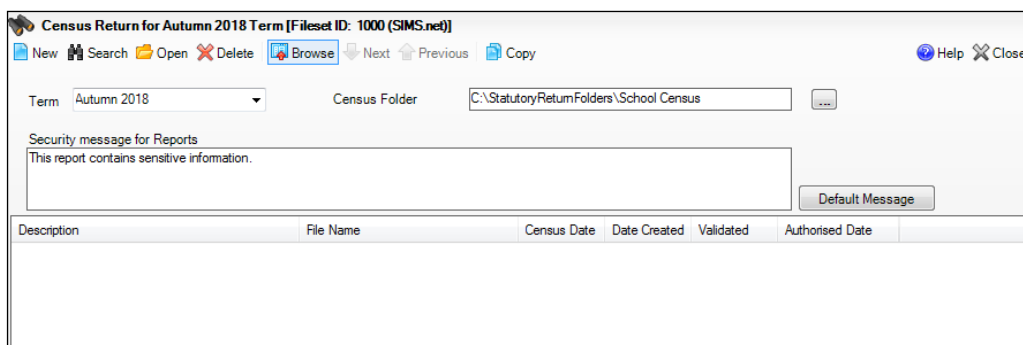
1. Select **Routines | Statutory Returns | School Census** to load the School Census validation and reporting files.



NOTE: The first time that the **Routines | Statutory Returns | School Census** menu route is selected during each SIMS session, there is a delay while the School Census files are loaded.

When the files are loaded, the **Census Return** browser is displayed.

NOTE: The Fileset ID is displayed in the browser header (for information only).



By default, the **Term** field displays the appropriate term for the selected return, in this instance **Autumn 2018**.

2. Ensure that the **Census Folder** is selected correctly and that the required **Security message for Reports** is specified, as described in the following sections.



More Information:

Deleting an Unauthorised Return on page 41

Specifying the Security Message for Reports on page 11

Configuring the Census Folder

Before creating a return, the folder in which the return file will be saved must be specified.

IMPORTANT NOTES: Due to the sensitive nature of some of the data stored in SIMS, careful consideration must be given when specifying the location of any folder into which you save sensitive data, e.g. census returns, imported and exported CTFs, etc.

You should be mindful of your school's responsibilities with respect to information security. Consider which users have access to the chosen folder, especially if the folder is shared on a server. Please refer to the government website for more information about securing your information (<https://www.gov.uk/service-manual/technology/securing-your-information>). If you are in any doubt, you should consult with your IT Security Officer before proceeding.

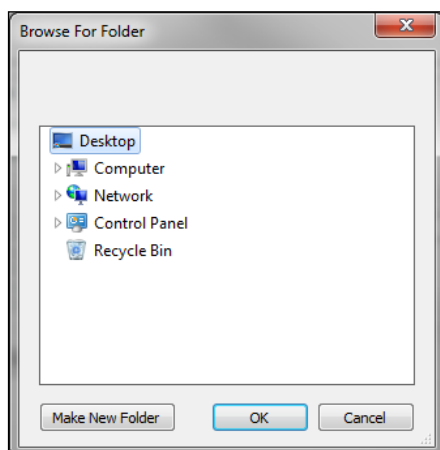
The General Data Protection Regulation (GDPR), which replaces the Data Protection Act 1998, is a directive for certain safeguards regarding the use of personal data. It is important that schools process all data (not just the data collected for the school census) in accordance with the full requirements of the GDPR.

Further information on the GDPR can be found on the Guide to the General Data protection Regulations (GDPR) page of the Information Commissioners Office (ICO) website (<https://ico.org.uk/for-organisations/guide-to-the-general-data-protection-regulation-gdpr>).

1. Specify the folder where the return files are to be stored by entering the folder location in the **Census Folder** field.

Alternatively, click the **Browse** button to display the **Browse For Folder** dialog.

 *Browse button*



Navigate to the location of the required folder and highlight it. If a suitable folder does not exist, click the **Make New Folder** button and enter a suitable name for the new folder.

2. Click the **OK** button to select or create the folder and return to the browser, where the new folder name is displayed.

IMPORTANT NOTE: *If you are changing the location of the folder, ensure that only authorised personnel have access to the new folder, as it will contain sensitive data. For more information, please see the important note at the beginning of this section.*

3. Ensure that the **Security Message for Reports** is appropriate for your school.

Specifying the Security Message for Reports

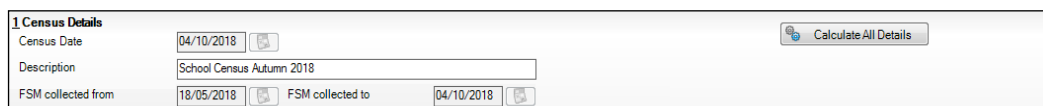
At the bottom of the browser is a **Security Message for Reports** field, which contains text that will be displayed at the top of each report.

1. The security message text defaults to **This report contains sensitive information**, but can be edited, if required.
2. If any edits are made, you can click the **Default Message** button to revert to the default text.
3. Click the **New** button to display the **Census Return Details** page.

Editing Census Details

The **Census Details** panel displays the following read-only information:

- Census Date 04/10/2018.
- FSM (Free School Meal) data collected from 18/05/2018 to 04/10/2018.



The screenshot shows a form titled '1 Census Details'. It contains three main sections: 'Census Date' with a date field set to '04/10/2018', 'Description' with a text field containing 'School Census Autumn 2018', and 'FSM collected from' with a date field set to '18/05/2018' and 'FSM collected to' with a date field set to '04/10/2018'. A 'Calculate All Details' button is located in the top right corner.

The default **Description (School Census Autumn 2018)** can be edited, if required, e.g. to identify a dry run.

WARNING: Each description used must be unique. An error message is displayed if SIMS identifies a duplicate description.

A unique description also helps to identify the required return when viewed in the **Census Return** browser and can be particularly useful when creating dry runs, or copies of existing returns.

Calculating All Details

Clicking the **Calculate All Details** button extracts the required information from SIMS and displays the results in the applicable panels of the **Census Return Details** page.

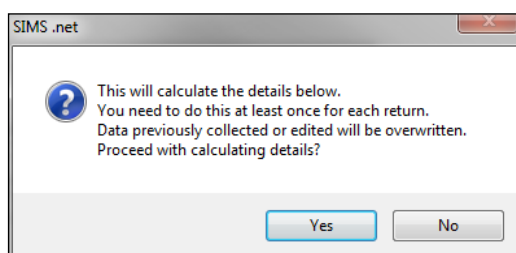
IMPORTANT NOTE: You must calculate all details at least once to populate the various panels for each return.

Do not use the **Calculate All Details** button more than once if you wish to keep any changes you have made. Clicking the **Calculate All Details** button overwrites any previously collected or edited data (in every panel where details are calculated automatically) with the data currently stored in SIMS.

Any details that are calculated automatically should be checked and edited, if required.

1. Click the **Calculate All Details** button.

A message advises that any existing data currently shown on the **Census Return Details** page will be overwritten.



2. Click the **Yes** button to calculate all details. At this point, depending on the number of pupils in the school, there may be a short delay while details are calculated.

The applicable panels on the **Census Return Details** page are populated with data.

3. The return can be saved at any point by clicking the **Save** button.

Editing School Information

The **School Information** panel displays details that have previously been recorded on the **School Details** page in SIMS (**Focus | Pupil | Pupil Details**). The information displayed may vary depending on your school and the details entered, e.g. Academy specific information.

The details displayed are read-only but can be amended, if necessary, via the **School Detail** button.

| 2 School Information | | | |
|-------------------------------|-----------------------------|----------------------|---------------|
| School Name | Water Babies Nursery School | | |
| LA | 823 | Establishment Number | 1050 |
| Telephone | 852015 | URN | |
| School E-mail Address | school@we.com | | |
| School Phase | NS (Nursery) | | |
| School Type | Maintained Nursery | | |
| Governance | Community | Intake Type | Comprehensive |
| Lowest NC Year | N1 | Highest NC Year | N2 |
| School Detail | | | |

1. If any details are missing or incorrect, click the **School Detail** button to display the **School Detail** dialog, where information applicable to your school is displayed.

| School Detail | | | |
|---|--|-----------------------|--------------------------|
| School Details - Water Babies Nursery School | | | |
| Save Undo Help | | | |
| 1 Establishment 2 Address 3 Contact Details 4 Sites 5 Documents 6 Childcare | | | |
| 1 Establishment | | | |
| School Name | Water Babies Nursery School | | |
| LA | 823 Central Bedfordshire | | |
| Establishment Number | 1050 | | |
| Unique Reference Number | 012345 | | |
| School Phase | Nursery | | |
| School Type | Maintained Nursery | | |
| School Governance | Community | | |
| Intake Type | Comprehensive | | |
| Previous School Name | | Date Name Changed | |
| Previous Estab Number | | Earliest DOA | |
| Previous URN Number | | Date Number Changed | |
| Boarding Pupils | <input type="checkbox"/> Nursery Class <input checked="" type="checkbox"/> | Special Class or Unit | <input type="checkbox"/> |
| Head Teacher | Mrs Gillian Grosvenor | Main Contact | Mrs G Grosvenor |
| Curriculum Years | N1 N2 | | |
| OK Cancel | | | |

03| Producing the School Census Autumn Return

2. Add or amend the school details, selecting from the drop-down lists where applicable.

NOTE: The **School Name**, **LA number**, **Establishment Number**, **School Phase** and **Curriculum Years** were set up when SIMS was installed. If these details are incorrect, please contact your Local Support Unit for assistance.

3. Ensure that the establishment's six digit **Unique Reference Number** (URN) is entered. The number is available via the Get information about schools website (<https://get-information-schools.service.gov.uk/>), which is a register of schools and colleges in England.
4. Click the **Save** button then click the **OK** button to return to the **Census Return Details** page, where the updated details are displayed.

Information for Academies

| 2 School Information | | | |
|--|--|-----------------------|---|
| School Name | <input type="text" value="Green Abbey School"/> | Previous Name | <input type="text" value="Previous Name School"/> |
| LA | <input type="text" value="823"/> | Establishment Number | <input type="text" value="4321"/> |
| Telephone | <input type="text" value="851234"/> | URN | <input type="text"/> |
| School E-mail Address | <input type="text" value="office@ga.org.uk"/> | | |
| School Phase | <input type="text" value="SS"/> <input type="text" value="Secondary"/> | Previous Estab Number | <input type="text" value="1234"/> |
| School Type | <input type="text" value="Academies"/> | | |
| Governance | <input type="text" value="Academies"/> | Intake Type | <input type="text" value="Comprehensive"/> |
| Lowest NC Year | <input type="text" value="7"/> | Highest NC Year | <input type="text" value="13"/> |
| <input type="button" value="School Detail"/> | | | |

Academies should also ensure that the following information is recorded, if applicable:

- The **School Type** and **School Governance**.
Select **Academies** from the applicable drop-down lists.
- The **Previous Name** and **Date Name Changed**.
- The **Previous Estab Number** and **Earliest DOA** (date of admission).
This information is used by School Census. If the establishment number (DfE number) has changed for sponsor-led Academies, historical information is not collected and the earliest date of admission is reported in the School Census.
- The **Previous URN Number** (used by other census returns) and **Date Number Changed**.
This information is used by the School Workforce Census. For all types of Academies opened in the collection period, the date that the establishment's URN changed is used to determine when the academy was formed. Historical information is not collected from before the date the URN changed.

Editing Early Years

Early Years data is collected from all schools that have early years pupils on-roll on census day. The following items are collected:

- Hours at Setting
- Funded Hours
- Disability Access Fund
- 30 Hour Code
- Extended Funded Hours.

NOTE: Disability Access Fund, 30 Hour Code and Extended Funded Hours are not collected in the census for pupils aged two at 31/08/2018.

Funded Hours and Hours at Setting

Funded hours are the total number of free child care hours that a child receives. All three and four year old pupils are eligible for 15 hours funded child care a week. Advice about the eligibility of two year old children for funded child care can be found on the DfE website (<https://www.gov.uk/help-with-childcare-costs/free-childcare-2-year-olds>).

Hours at Setting include funded hours (as described previously) plus any additional hours funded by other means.

The hours collected in this return are for the week in which the census day falls.

| Date of Birth Ranges | Phase and Year Group | Free Entitlement |
|------------------------------------|--|------------------|
| 01/09/2014 to 31/08/2016 inclusive | All relevant schools and year groups | 15 hours |
| 01/09/2013 to 31/08/2014 inclusive | All relevant schools - National Curriculum Year groups E1, E2, N1 and N2 only. | 15 hours |

Disability Access Fund

The Disability Access Fund (DAF) is payable as a lump sum once a year and awarded to three and four year old pupils who meet the following criteria:

- They are in receipt of child Disability Living Allowance (DLA) and
- They access their entitlement to free early learning and childcare, e.g. funded hours.

03| Producing the School Census Autumn Return

Disability Access Fund data is collected in this return for pupils who are in receipt of the fund on census day.

| Date of Birth Ranges | Phase and Year Group |
|------------------------------------|--|
| 01/09/2014 to 31/08/2015 inclusive | All relevant schools and year groups |
| 01/09/2013 to 31/08/2014 inclusive | All relevant schools - National Curriculum Year groups E1, E2, N1 and N2 only. |

Extended Funded Hours and 30 Hour Code

Extended Funded Hours are the number of hours that are in addition to the initial 15 funded hours that a child receives and is applicable to three and four year old pupils only.

Extended Funded hours can double the original 15 hours of free child care to 30 hours a week, provided that the following criteria are met:

- Both parents must be working (or the sole parent is working in a lone parent family) and live in England.
- Each parent earns, on average, a weekly minimum equivalent to 16 hours at National Minimum Wage or National Living Wage.
- Each parent must have an annual income of less than the specified amount.

Parents who meet the extended funded hours criteria must obtain a unique code from the Tax Office (HM Revenue & Customs), then provide it to the school, together with other details, to confirm their eligibility for extended child care hours.

The 11 digit **30 Hour Code** and the number of extended funded hours are collected in this return for the week in which the census day falls.

| Date of Birth Ranges | Phase and Year Group | Free Entitlement |
|------------------------------------|--|------------------|
| 01/09/2014 to 31/08/2016 inclusive | All relevant schools and year groups | 15 hours |
| 01/09/2013 to 31/08/2014 inclusive | All relevant schools - National Curriculum Year groups E1, E2, N1 and N2 only. | 15 hours |

Extended Funded Hours information provided by the DfE can be found on their website (<https://www.gov.uk/government/publications/30-hours-free-childcare-la-and-early-years-provider-guide>).

Recording Early Years

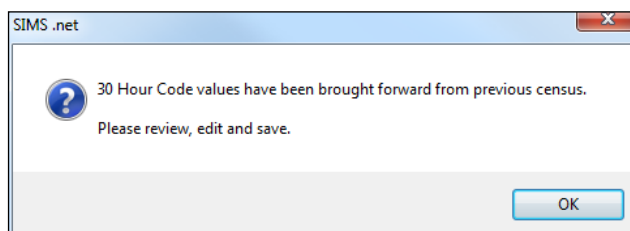
The required data can be recorded:

- via the **Edit** button in the **Early Years** panel
- via **Tools | Statutory Returns Tools | Update Early Years - Update Early Years** page. The data in the **Early Years** panel must be refreshed by clicking the **Recalculate** button after using the Update Early Years routine.

If data has been recorded previously, the values are displayed in the read-only **Early Years** panel. Only cohorts applicable to your school are displayed.

| Name | Date of Birth | AdNo. | YTI | Reg | Age at 31/08/2018 | Age at 31/12/2018 | Hours at Setting | Funded Hours | Disability Access Fund | 30 Hour Code | Extended Funded Hours |
|-----------------|---------------|--------|-----|-----|-------------------|-------------------|------------------|--------------|------------------------|--------------|-----------------------|
| Clark,Felicity | 02/02/2015 | 001642 | N2 | | 3 | 3 | 30 | 15 | No | 5000000000 | 15 |
| Fitzroy,Roxanne | 07/07/2015 | 001643 | N2 | | 3 | 3 | 30 | 10 | Yes | | |
| Flint,Bradley | 22/12/2014 | 001644 | N2 | | 3 | 4 | | | | | |
| Holden,Beatrice | 12/07/2015 | 001645 | N2 | | 3 | 3 | | | | | |
| Hollins,Bridget | 23/02/2015 | 001646 | N2 | | 3 | 3 | | | | | |
| Sauzo,Amiaz | 17/05/2015 | 001647 | N2 | | 3 | 3 | | | | | |
| Sonin,Marku | 21/06/2015 | 001648 | N2 | | 3 | 3 | | | | | |

- In the **Early Years** panel, click the **Edit** button to display a message informing you that data has been brought forward from the previous census.



- Click the **OK** button to display the **Update Early Years** page. By default, the current term is displayed in the **Census** panel.

| Name | Date of Birth | AdNo. | YTI | Reg | Age at 31/08/2018 | Age at 31/12/2018 | Hours at Setting | Funded Hours | Disability Access Fund | 30 Hour Code | Extended Funded Hours |
|-----------------|---------------|--------|-----|-----|-------------------|-------------------|------------------|--------------|------------------------|--------------|-----------------------|
| Clark,Felicity | 02/02/2015 | 001642 | N2 | | 3 | 3 | 30 | 15 | No | 5000000000 | 15 |
| Fitzroy,Roxanne | 07/07/2015 | 001643 | N2 | | 3 | 3 | 30 | 10 | Yes | | |
| Flint,Bradley | 22/12/2014 | 001644 | N2 | | 3 | 4 | | | | | |
| Holden,Beatrice | 12/07/2015 | 001645 | N2 | | 3 | 3 | | | | | |
| Hollins,Bridget | 23/02/2015 | 001646 | N2 | | 3 | 3 | | | | | |
| Sauzo,Amiaz | 17/05/2015 | 001647 | N2 | | 3 | 3 | | | | | |
| Sonin,Marku | 21/06/2015 | 001648 | N2 | | 3 | 3 | | | | | |

- To add or edit the number of **Hours at Setting**, **Funded Hours** and **Extended Funded Hours** (i.e. the number of hours in addition to the initial funded hours) for an individual pupil, select the required criteria in the **Pupils View** panel.

In the **Pupils** panel, highlight the required pupil, click the applicable cell and then enter the required number of hours.

IMPORTANT NOTES: Values for **Funded Hours**, **Hours at Setting** and **Extended Funded Hours** should be entered using two decimal places. For example, 1 hour 15 minutes must be entered as 1.25. Zero (0) is an accepted value.

If the value entered is within the range accepted by SIMS but is higher than what the DfE expects, a validation error is displayed when the return is created and validated. An explanation as to why the value is higher should be recorded on the COLLECT Portal.

4. If most of the pupils are receiving the same number of hours, the following method can be used to populate the column quickly:
 - a. In the **Pupils View** panel, select the required year group from the Year Taught In (**YTI**) drop-down list. The selected pupils only are displayed in the **Pupils** panel.
 - b. Right-click in the **Pupils** panel, then select **Select All** from the drop-down list.
 - c. Click in one of the highlighted cells of the column you wish to populate, i.e. **Hours at Setting**, **Funded Hours** or **Extended Funded Hours**, then enter the number of hours that is applicable to the majority of pupils.
This number is then entered automatically for all the selected pupils.
 - d. Click to the right of the grid to deselect all.
 - e. Edit the entry for each pupil who is receiving a different number of hours. This is achieved by highlighting the required pupil, clicking the associated **Hours at Setting**, **Funded Hours** or **Extended Funded Hours** cell (as applicable) then entering the required number.
5. Indicate whether the pupils are in receipt of the **Disability Access Fund**. Click the applicable cell then select **Yes** or **No** from the drop-down list.
6. Enter the 11 digit **30 Hour Code**, e.g. 50000000000, in the applicable cell, if in receipt of extended funded hours.

IMPORTANT NOTE: Each pupil must have a different 30 hour code. Ensure that all 11 digits are entered.

7. Click the **Save** button.
If there are any pupils for whom zero hours have been recorded, a message is displayed. Click the **Yes** button to save the data or the **No** button to return to the **Update Hours** page, where the number of hours can be entered.
8. Click the **OK** button to return to the **Census Return Details** page, where the updated hours are displayed.

IMPORTANT NOTES:

If, while completing the return, any of the following processes are performed, click the **Recalculate** button (located at the top right-hand side of the **Early Years** panel) to ensure that the up-to-date data is displayed:

- any information is update via **Tools | Statutory Return Tools | Update Early Years**
- a new pupil is added in SIMS
- a pupil's date of birth is amended.

Please note that when information is updated via the **Edit** button, the **Early Years** panel is refreshed automatically.

**More Information:**

Early Years Report on page 31

Using the Status to determine if Hours at Setting or Funded Hours are recorded

1. On the **Census Return Details** page, click the **Edit** button (located in the **Early Years** panel) to display the **Update Early Years** page.
2. In the **Pupils View** panel, ensure that the required **Age at** date, **YTI** and **Reg** group are selected and then select **No Hours at Setting** (or **No Funded Hours**) from the **Status** drop-down list.

Only pupils who do not have an entry for **Hours at Setting** (or **Funded Hours**) are displayed.

3. Enter the required values for these pupils as described previously.
4. Click the **Save** button.

Editing Pupils with Top-Up Funding

Top-up funding is supplied to schools, in most cases by the Local Authority, to meet the additional costs of support for high needs pupils.

The **Top-up Funding** panel enables you to record the on-roll pupils for whom your school is receiving top-up funding on census day.

If the pupils with top-up funding have been recorded previously via **Tools | Statutory Return Tools | Update Top-Up Funding**, the data is displayed in the **Top-up Funding** panel.

| 5 Top-up Funding | | | | | | |
|------------------|-------------------|----------|-----|-----|-----|---------|
| Surname | Preferred Surname | Forename | YTI | Reg | SEN | Ever in |
| Aaron | Aaron | Chris | 6 | 6KH | | No |
| Davies | Davies | Ben | 4 | 4ES | | No |
| Dexter | Dexter | Bethany | 3 | 3CB | | No |

The information displayed in the **Top-up Funding** panel is read-only. Updating top-up funding information, e.g. adding or removing a pupil, must be done via the **Edit** button.

03| Producing the School Census Autumn Return

1. Click the **Edit** button to display the **Update Pupils with Top-up Funding** dialog. The pupils currently recorded as having top-up funding are displayed in the **Top-up Funding** list (located in the bottom half of the page).

Update Students with Top-up Funding

Update

Term: Autumn 2018 Students On-Roll on Census Day

Surname: Forename: YTI: All Reg: All

Preferred Surname: SEN: <Any> Ever in care at this school: <Any> Search

Top-up Funding

| Surname | Preferred Surname | Forename | YTI | Reg | SEN | Ever in Care |
|---------|-------------------|----------|-----|-----|-----|--------------|
| Aaron | Aaron | Chris | 6 | 6KH | | No |
| Davies | Davies | Ben | 4 | 4ES | | No |
| Dexter | Dexter | Bethany | 3 | 3CB | | No |

2. Use the **Students On-Roll on Census Day** search criteria to locate the additional pupils you wish to record as having top-up funding.

TIP: Click the **Search** button to display a list of all pupils who have not been defined as having top-up funding. Alternatively, enter all or part of the required search criteria then click the **Search** button.

Term: Autumn 2018 Students On-Roll on Census Day

Surname: white Forename: YTI: All Reg: All

Preferred Surname: SEN: <Any> Ever in care at this school: <Any> Search

| Surname | Preferred Surname | Forename | YTI | Reg | SEN | Ever in Care |
|-----------|-------------------|----------|-----|-----|-----|--------------|
| White | White | Aurora | 4 | 4SL | | No |
| Whitehead | Whitehead | William | R | ELM | | No |
| Whitemore | Whitemore | Amie | 2 | 2JB | | No |

Top-up Funding Add Remove

- Highlight the pupil(s) who you want to record as having top-up funding then click the **Add** button to move the selected pupil(s) to the **Top-up Funding** list.

One or more pupils can be selected using the **Ctrl+click** or **Shift+click** functionality.

- To remove a pupil from the **Top-up Funding** list, highlight the required pupil then click the **Remove** button. The pupil's record is moved to the **Students On-Roll on Census Day** list, from where it can be reselected, if required.
- Click the **Update** button to save the data and arrange the list of pupils in **Surname** order.
- Click the **OK** button (located at the bottom right-hand side of the screen) to return to the **Census Return Details** page, where the updated information is displayed in the **Top-up Funding** panel.



Additional Resources:

Preparing for the School Census Autumn 2018 Return handbook



More Information:

Top-up Funding Report on page 30

Editing Pupil Post Looked After Arrangements

The Post Looked After Arrangements routine provides schools with the ability to record whether pupils who are on-roll on census day were looked after immediately before adoption or prior to being the subject of a residence or special guardianship order.

If the pupils with post looked after arrangements (PLAA) have been recorded previously via **Tools | Statutory Return Tools | Update Student Post Looked After Arrangements**, the data is displayed in the **Post Looked After Arrangements** panel.

03| Producing the School Census Autumn Return

1. Click the **Recalculate** button (in the **Post Looked After Arrangements** panel) to ensure that all pupils who already have a PLAA status are displayed.

| Surname | Preferred Surname | Forename | YTI | Reg | Ever in C. | Post Looked After Arrangements |
|----------|-------------------|----------|-----|-----|------------|--|
| Cain | Cain | William | R | ELM | Yes | Ceased to be looked after through Adoption |
| Franklin | Franklin | Ethan | 2 | ZJB | Yes | Ceased to be looked after through a Special Guardianship Order (SGO) |

The information displayed in the **Post Looked After Arrangements** panel is read-only. Updating the information, e.g. editing the PLAA status or adding a pupil, must be done via the **Edit** button.

2. Click the **Edit** button to display the **Update Pupils Post Looked After Arrangements** page. Any pupils currently recorded as having PLAA are displayed in the **Post Looked After Arrangements** list (located in the bottom half of the page).

Update Students Post Looked After Arrangements

Update

Term: Autumn 2018 Students On-Roll on Census Day

Surname: [] Forename: [] YTI: All

Preferred Surname: [] Reg: All Ever in Care at this school: <Any> Search

Post Looked After Arrangements

Add Remove

| Surname | Preferred Surname | Forename | YTI | Reg | Ever in Care | Post Looked After Arrangements | Evidence Obtained |
|----------|-------------------|----------|-----|-----|--------------|---|-------------------------------------|
| ▶ Cain | Cain | William | R | ELM | Yes | Ceased to be looked after through Adoption | <input checked="" type="checkbox"/> |
| Franklin | Franklin | Ethan | 2 | ZJB | Yes | Ceased to be looked after through a Special Guardianship... | <input type="checkbox"/> |

3. Use the **Students On-Roll on Census Day** search criteria to locate the additional pupils you wish to record as having PLAA.

TIP: Click the **Search** button to display a list of pupils who have not been defined as having PLAA. Alternatively, enter all or part of the required search criteria then click the **Search** button.

Term: Autumn 2018 Students On-Roll on Census Day

Surname: sm Forename: YTI: All

Preferred Surname: Reg: All Ever in Care at this school: <Any> Search

| Surname | Preferred Surname | Forename | YTI | Reg | Ever in Care |
|---------|-------------------|----------|-----|------|--------------|
| Smith | Smith | Alex | 6 | 6VC | No |
| Smith | Smith | Amy | 6 | 6KH | No |
| Smith | Smith | Erin | 1 | PINE | No |
| Smith | Smith | Laura | 6 | 6VC | No |
| Smyth | Smyth | Cheryl | 3 | 3TO | No |
| Smyth | Smyth | Jonathan | 3 | 3CB | No |
| Smyth | Smyth | Rhianna | 3 | 3CB | No |
| Smythye | Smythye | Vincent | 4 | 4SL | No |

Post Looked After Arrangements Add Remove

4. Highlight the pupils who you want to record as having PLAA then click the **Add** button to move the selected pupils automatically to the **Post Looked After Arrangements** list.

One or more pupils can be selected using the **Ctrl+click** or **Shift+click** functionality.

Post Looked After Arrangements Add Remove

| Surname | Preferred Surname | Forename | YTI | Reg | Ever in Care | Post Looked After Arrangements | Evidence Obtained |
|----------|-------------------|----------|-----|-----|--------------|---|-------------------------------------|
| Cain | Cain | William | R | ELM | Yes | Ceased to be looked after through Adoption | <input checked="" type="checkbox"/> |
| Franklin | Franklin | Ethan | 2 | 2JB | Yes | Ceased to be looked after through a Special Guardianship Order | <input type="checkbox"/> |
| Smith | Smith | Amy | 6 | 6KH | No | Ceased to be looked after through Adoption | <input type="checkbox"/> |
| Smyth | Smyth | Jonathan | 3 | 3CB | No | Ceased to be looked after through a Special Guardianship Order (SGO) Ceased to be looked after through a Residence Order (RO) Ceased to be looked after through a Child Arrangement Order (CAO) | <input type="checkbox"/> |

5. For each pupil added to the **Post Looked After Arrangements** list, select the post looked after arrangement status by clicking in the applicable cell in the **Post Looked After Arrangements** column then selecting the required status from the drop-down list:

- **Ceased to be looked after through Adoption**
- **Ceased to be looked after through a Special Guardianship Order (SGO)**
- **Ceased to be looked after through a Residence Order (RO)**
- **Ceased to be looked after through a Child Arrangement Order (CAO).**

NOTE: Ceased to be looked after through a Residence Order (RO) has been replaced by Ceased to be looked after through a Child Arrangement Order (CAO).

You do not need to change any existing residence orders but new post looked after arrangements must be recorded as child arrangement orders.

6. Select the **Evidence Obtained** check box if documents have been obtained that provide evidence of the post looked after arrangements.

NOTE: Evidence Obtained is not collected in the School Census return but should be recorded as proof of DfE/Ofsted compliance.

7. To remove a name from the list, highlight it then click the **Remove** button. The record is moved to the **Students On-Roll on Census Day** list, from where it can be reselected, if required.
8. Click the **Update** button to save the information and arrange the list of pupils in surname order.
If you have indicated that evidence has been obtained, you are reminded to ensure that the necessary documents are stored securely outside of SIMS or within the Document Management Server.
9. Click the **OK** button to continue.
10. Click the **OK** button (located at the bottom right-hand side of the screen) to return to the **Census Return Details** page, where the updated information is displayed in the **Post Looked After Arrangements** panel.



Additional Resources:

Preparing for the School Census Autumn 2018 Return handbook



More Information:

Post Looked After Arrangements Report on page 31

04 | Completing the School Census Autumn Return

| | |
|--|----|
| Creating and Validating a School Census Return | 25 |
| Producing Detail Reports | 29 |
| Printing a Report from your Web Browser | 32 |
| Transferring Report Data to a Spreadsheet | 33 |
| Deleting Temporary Web Browser Files | 33 |
| Producing the Summary Report | 34 |
| Editing an Unauthorised Return | 35 |
| Authorising the Return..... | 35 |
| Submitting the Return | 38 |
| Retrieving Authorised Census Return Files | 38 |
| Copying a Return | 40 |
| Deleting an Unauthorised Return | 41 |

Creating and Validating a School Census Return

A return must be created, validated and authorised before it can be sent to your Local Authority or uploaded to the DfE COLLECT data collection website (as applicable to your school).

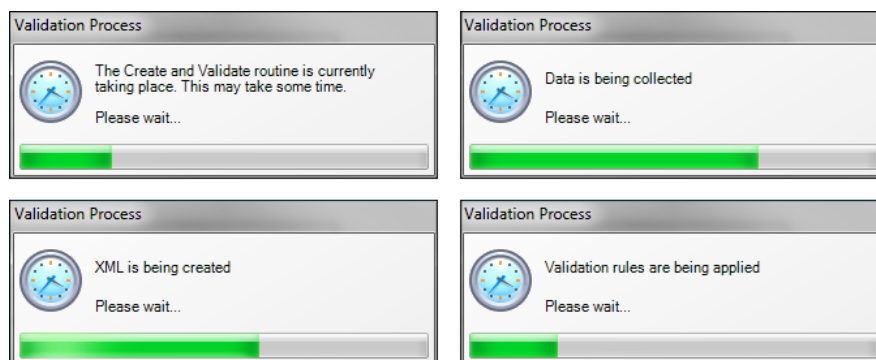
Validating the return creates an unauthorised return file, which is then run against a set of DfE rules. When the validation is complete, a list of errors and queries is displayed.

An error is caused by either missing or inaccurate data, whilst a query highlights data which is unusual or not as expected, e.g. there are no pupils with special educational needs.

1. Select **Routines | Statutory Returns | School Census** to display the **Census Return** browser.
2. Click the **Search** button to display a list of returns.
3. Double-click the required return to display the **Census Return Details** page.
4. Click the **Create & Validate** button to begin the process. There may be a short delay, depending on the number of pupils at your school.

04| Completing the School Census Autumn Return

A progress bar is displayed indicating that the Create and Validate process is being performed.



When the validation process is complete, the **Validation Errors Summary** panel is displayed at the bottom of the screen.

Resolving Validation Errors and Checking Queries

After creating the return file and validating the data, any errors and queries found are listed in the **Validation Errors Summary** panel at the bottom of the **Census Return Details** page.

| Type | Sequence | Message | Location | Solution |
|------|----------|--|---|--|
| F | 1500 | UPN missing | Name: Abraham, Janet Date of Birth: 2005-05-19, Female/UPN | # Go to Focus Student Student Details and add or issue a UPN. |
| F | 1500 | UPN missing | Name: Reid, Rosal Date of Birth: 2009-03-07, Female/UPN | # Go to Focus Student Student Details and add or issue a UPN. |
| F | 1840 | Pupils aged 5 and over Language missing or invalid | Name: Henderson, Jacki Date of Birth: 2010-05-07, Male/UPN: K823299914029 | # Go to Focus Student Student Details Ethnicultural panel and enter First language. |
| F | 2350 | Insufficient Address information provided | Name: Baine, Kiri Date of Birth: 2005-01-18, Male/UPN: H20200109012 | # Go to Focus Student Student Details Addresses and edit pupil's address |
| Q | 1501Q | Please Check: Pupil's age is out of range for school type | Name: Surgal, Skaisel Date of Birth: 2003-03-28, Female, Age: 12/UPN: B820200106088 | # Go to Focus Student Student Details and enter pupil's date of birth. |
| Q | 1620Q | Please check: duplicate pupil records with the same Surname, Forename, Gender and Date of birth: | Name: Bennison, Hugo Date of Birth: 2010-02-03, Male/UPN: | # Go to Focus Student Student details and check for duplicate pupil record |
| Q | 1620Q | Please check: duplicate pupil records with the same Surname, Forename, Gender and Date of birth: | Name: Bennison, Hugo Date of Birth: 2010-02-03, Male/UPN: VE23299914008 | # Go to Focus Student Student details and check for duplicate pupil record |
| Q | 2355Q | Please check: Pupil record with no address details | Name: Balinski, Cylis Date of Birth: 2010-03-14, Female/UPN: C823299914005 | # Go to Focus Student Student Details Addresses and edit pupil's address |
| Q | 2520Q | Please check: sessions possible should not be greater than 150 | Name: Aaron, Luci Date of Birth: 2005-09-01, Female/UPN: J820200109032 | # Go to Focus Attendance (Lesson Monitor) Display Marks and check the attendance marks |
| Q | 2520Q | Please check: sessions possible should not be greater than 150 | Name: Aaron, Sophie Date of Birth: 2005-09-01, Female/UPN: M820200109034 | # Go to Focus Attendance (Lesson Monitor) Display Marks and check the attendance marks |

The number of errors and queries found during the Create and Validate process is displayed in the header of the **Validation Errors Summary** panel.

Details about each of the errors and queries found are displayed in the columns as described in the following table.

| Column | Description |
|-----------------|--|
| Type | Displays the type of validation rule: Failure (F displayed in red) indicates an error, which must be corrected. Query (Q displayed in black) indicates that there are unusual data conditions. These should be considered and corrected, if necessary. |
| Sequence | Shows the error or query number. |
| Message | Displays the text of the error or query message. |
| Location | Lists the specific record containing the error or query. |
| Solution | Provides a suggestion on how the error can be corrected or the query checked. Many solutions have a hyperlink (indicated by a #) to the appropriate area of SIMS. |

To assist in the resolution of any errors and queries:

- When the mouse pointer is hovered over a **Message**, **Location** or **Solution** cell, hover help displays the entire content of that cell.
- When the mouse pointer is hovered over an error or query row, it changes to a hand if a hyperlink is available to the area of SIMS where the issue can be checked.

| Error Search | Type | Sequence | Message | Location | Solution |
|--------------|------|----------|--|--|---|
| ALL | F | 1500 | UPN missing | Name: Abraham, James Date of Birth: 2005-05-19, Female/UPN: | # Go to Focus Student Student Details and add or issue a UPN. |
| | F | 1500 | UPN missing | Name: Patel, Raveel Date of Birth: 2009-03-07, Female/UPN: | # Go to Focus Student Student Details and add or issue a UPN. |
| | F | 1840 | Pupils aged 5 and over Language missing or invalid. | Name: Henderson, Jacki Date of Birth: 2010-05-07, Male/UPN: K923298914029 | # Go to Focus Student Student Details Ethnicultural panel and enter First language. |
| | F | 2350 | Insufficient Address information provided. | Name: Bains, Kirki Date of Birth: 2005-01-18, Male/UPN: H520200109012 | # Go to Focus Student Student Details Ethnicultural panel and enter First language. |
| | Q | 1601Q | Please Check: Pupil's age is out of range for school type. | Name: Sungal, Skarstel Date of Birth: 2003-03-28, Female, Age: 12/UPN: B820200106088 | # Go to Focus Student Student Details and enter pupil's date of birth. |

NOTE: A hyperlink is also indicated by a hash symbol (#) preceding the **Solution** text.

Click the appropriate hyperlink to display the specific SIMS area where the record(s) can be checked or corrected.

- The Student Search functionality can be used to display all errors and queries relating to a particular pupil. Enter all or part of a UPN, pupil's surname or date of birth in the **Student Search** field then select the required record from the **Student Search** drop-down list to populate the **Student Search** field. Click the **Find** button to display the applicable validation records.

| Error Search | Type | Sequence | Message | Location | Solution |
|--------------|------|----------|--|--|--|
| Smith | F | 1500 | UPN missing | Name: Abraham, James Date of Birth: 2005-05-19, Female/UPN: | # Go to Focus Student Student Details and add or issue a UPN. |
| | F | 1500 | UPN missing | Name: Patel, Raveel Date of Birth: 2009-03-07, Female/UPN: | # Go to Focus Student Student Details and add or issue a UPN. |
| | F | 1840 | Pupils aged 5 and over Language missing or invalid. | Name: Henderson, Jacki Date of Birth: 2010-05-07, Male/UPN: K923298914029 | # Go to Focus Student Student Details Ethnicultural panel and enter First language. |
| | F | 2350 | Insufficient Address information provided. | Name: Bains, Kirki Date of Birth: 2005-01-18, Male/UPN: H520200109012 | # Go to Focus Student Student Details Ethnicultural panel and enter pupil's address. |
| | Q | 1601Q | Please Check: Pupil's age is out of range for school type. | Name: Sungal, Skarstel Date of Birth: 2003-03-28, Female, Age: 12/UPN: B820200106088 | # Go to Focus Student Student Details and enter pupil's date of birth. |

04| Completing the School Census Autumn Return

- Click a **Solution** hyperlink to display the area of SIMS where the associated issue can be checked and/or corrected. When you return to the **Validation Errors Summary** panel, the details of the applicable pupil are displayed in the **Student Search** field. Click the **Find** button to display all errors and queries relating to that pupil.

| Type | Sequence | Message | Location | Solution |
|------|----------|--|---|--|
| F | 1500 | UPI missing | Name: Abraham, Janel Date of Birth: 2005-05-19, Female/UPN: | # Go to Focus Student Student Details and add or issue a UPN |
| Q | 2520Q | Please check: sessions possible should not be greater than 150 | Name: Abraham, Janel Date of Birth: 2005-05-19, Female/UPN: | # Go to Focus Attendance (Lesson Monitor) Display Marks and check the attendance marks |

- Use the **Errors Search** to display the required error or query you want to view. Select **ALL**, **ERRORS**, **QUERIES** or the required number from the drop-down list. The total number of rows that relate to the selected validation is displayed adjacent to the **Error Search** field.

| Type | Sequence | Message | Location | Solution |
|------|----------|---|---|--|
| Q | 1601Q | check: Pupil's age is out of range for school type. | Name: Sungeil, Skaisiel Date of Birth: 2003-03-28, Female, Age: 12/U/UPN: B620200106088 | # Go to Focus Student Student Details and enter pupil's date of birth. |
| Q | 1600Q | check: duplicate pupil records with the same Surname, Forename, Gender and Date of birth: | Name: Beninson, Hugo Date of Birth: 2010-02-03, Male/UPN: | # Go to Focus Student Student Details and check for duplicate pupil record. |
| Q | 1600Q | check: duplicate pupil records with the same Surname, Forename, Gender and Date of birth: | Name: Beninson, Hugo Date of Birth: 2010-02-03, Male/UPN: V62329914008 | # Go to Focus Student Student Details and check for duplicate pupil record. |
| Q | 2350Q | check: Pupil record with no address details. | Name: Batmeki, Cylal Date of Birth: 2010-03-14, Female/UPN: C82329914005 | # Go to Focus Student Student Details Addresses and edit pupil's address |
| Q | 2520Q | check: sessions possible should not be greater than 150 | Name: Aaron, Lizl Date of Birth: 2005-09-01, Female/UPN: J620200109032 | # Go to Focus Attendance (Lesson Monitor) Display Marks and check the attendance marks |
| Q | 2520Q | Please check: sessions possible should not be greater than 150 | Name: Aaron, Sophie Date of Birth: 2005-09-01, Female/UPN: M620200109034 | # Go to Focus Attendance (Lesson Monitor) Display Marks and check the attendance marks |

- By default, when **ALL** is selected from the **Errors Search** drop-down list, the errors are displayed at the top of the list.

The order of the items in the list can be changed by clicking the appropriate column heading.

| Type | Sequence | Message | Location | Solution |
|------|----------|---|---|---|
| F | 1500 | UPI missing | Name: Abraham, Janel Date of Birth: 2005-05-19, Female/UPN: | # Go to Focus Student Student Details and add or issue a UPN |
| F | 1500 | UPI missing | Name: Reid, Rosal Date of Birth: 2009-03-07, Female/UPN: | # Go to Focus Student Student Details and add or issue a UPN |
| F | 1940 | ed 5 and over Language missing or invalid | Name: Henderson, Jacki Date of Birth: 2010-05-07, Male/UPN: K63329914029 | # Go to Focus Student Student Details Ethnic/Cultural panel and enter First language. |
| F | 2350 | Address information provided: | Name: Bains, Kirki Date of Birth: 2005-01-18, Male/UPN: H620200109012 | # Go to Focus Student Student Details Addresses and edit pupil's address |
| Q | 1601Q | check: Pupil's age is out of range for school type. | Name: Sungeil, Skaisiel Date of Birth: 2003-03-28, Female, Age: 12/U/UPN: B620200106088 | # Go to Focus Student Student Details and enter pupil's date of birth. |
| Q | 1600Q | check: duplicate pupil records with the same Surname, Forename, Gender and Date of birth: | Name: Beninson, Hugo Date of Birth: 2010-02-03, Male/UPN: | # Go to Focus Student Student Details and check for duplicate pupil record. |

The width of the columns can be changed by dragging the dividing line between the column headings until the required size is achieved.

- View a summary of validation failures, which is particularly useful if there are a large number of errors/queries, by clicking the **Report** button (located at the left-hand side and directly above the **Validation Errors Summary** panel). The report is displayed in your web browser, e.g. Internet Explorer®, where it can be printed or transferred to another application, if required (please see *Transferring Report Data to a Spreadsheet* on page 33).

The report (Validation Errors Summary.HTML) is saved automatically in the **Census Folder**, which was specified previously in the **Census Return for <season> <year> Term** browser. The original report, which was generated when the **Create & Validate** button was clicked (e.g. <LACode><SchoolNumber>_<SurveyType>_<LACode><LL><Year>_<SerialNumber>_ValidationErrorsSummary.HTML), is also stored in this folder.

For guidance on navigating to files on your local workstation when you are working in a Hosted environment, please contact your System Manager or Local Support Unit.

Resolve as many errors and check as many queries as possible then revalidate the return details. Continue to resolve failures and revalidate the return as many times as necessary.

NOTE: All errors must be resolved and all queries must be investigated.

If at any point you wish to hide the list of error and queries, click the **Close** button located at the top right-hand side of the **Validation Errors Summary** panel. The list is displayed again when the Create and Validate process is run.

Many of the errors generated can be fixed quickly using bulk update functionality (via **Routines | Pupil | Bulk Update**). For more information, please refer to the *Managing Pupil/Students* handbook.

In addition to the **Validation Errors Summary**, an Errors and Resolutions document containing a list of all errors/queries that can be generated is being produced. Explanations and information on how to resolve the errors or whether the queries can be ignored are also included. The document can help to identify the order in which errors should be corrected. For example, if a UPN is missing, several UPN related errors might be generated. Therefore, adding missing UPNs can remove several errors.



More Information:

Transferring Report Data to a Spreadsheet on page 33

Producing Detail Reports

Detail reports can be used to check the data stored in SIMS that has been used to create the return. The reports can be produced as soon as the return has been created and validated.

Each detail report header displays the **Security Message** that was defined in the **Census Return** browser, the **Report Criteria** and the **Total Pupils** who are listed in the report. Also included in the report header is the **School Name**, the **Fileset Number**, the **Filename**, the **Report Created** date, and the **XML Version**.

Where a pupil's National Curriculum Year group is different from what their date of birth would suggest, the applicable **YTI** cell is highlighted in yellow.

04| Completing the School Census Autumn Return

The following reports are currently available.

On Roll Basic Details Report

Report Criteria: Pupils on-roll on census day.

This report provides the following information about pupils who are on-roll on census day: UPN, legal surname, legal forename, preferred surname, former surname, date of birth, gender, year taught in (YTI), date of admission (DOA), enrolment status, language, part-time status and boarder status.

SEN Report

Report Criteria: On-roll pupil with SEN Provision/Status = **S** (Statement), **E** (Education, Health and Care Plan) or **K** (SEN Support).

This report provides a list of pupils who have special educational needs. Displayed are their UPN, legal surname, legal forename, date of birth (DOB), gender, year taught in (YTI), SEN provision, member of SEN unit, member of resourced provision indicator and on-roll status.

Address Details Report

Report Criteria: Pupils on-roll on census day.

This report provides a list of pupils, their UPN, former UPN, legal surname, legal forename, middle name(s), post code, unique property reference number (UPRN), address details and the administrative area/county.

Definition: Unique Property Reference Number (UPRN) is a unique identifier (reference number) that links together related address records across different software programmes. This enables organisations to collate and share information based on a common reference number.

Free School Meal Eligibility Report

Report Criteria: On-roll pupils on census day who were eligible for free school meals on or after 18/05/2018 and up to and including census day.

This report provides information on free school meal eligibility for pupils who match the report criteria: UPN, legal surname, legal forename, date of birth (DOB), gender, year taught in (YTI), on-roll status and free school meal eligibility start date, end date and the UK country in which the eligibility applies.

NOTES: This report includes any free school meals recorded outside of England, e.g. Wales.

Only Free School Meals records where the country recorded is England or <blank> attract the Pupil Premium.

Top-up Funding Report

Report Criteria: On-roll pupils who have been awarded Top-up Funding as at census day.

The report provides the following information: UPN, legal surname, legal forename, date of birth (DOB), gender, year taught in (YTI) and SEN provision.

Early Years Report

Report Criteria: Pupils on-roll on census day who have early years data.

- All 2 year olds born between 01/09/2015 and 31/08/2016 (Hours at setting and Funded Hours only)
- All 3 year olds born between 01/09/2014 and 31/08/2015
- All 4 year olds born between 01/09/2013 and 31/08/2014 with Year Taught In E1, E2, N1 or N2.

The report provides the following information for each early years pupil: UPN, legal name, legal forename, date of birth (DOB), gender, year taught in (YTI), hours at setting, funded hours, 30 hour code, extended funded hours and disability access fund.

Post Looked After Arrangements Report

Report Criteria: On-roll pupils who have post looked after arrangements as at census day.

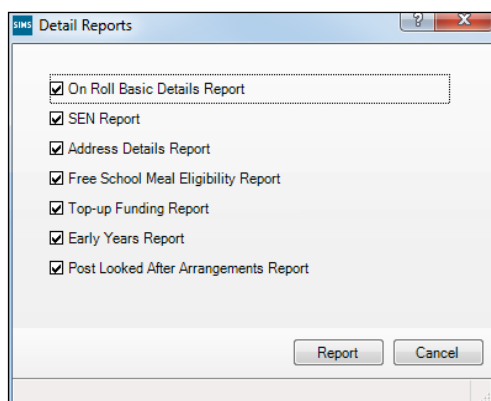
The report provides the following information about pupils who have post looked after arrangements: UPN, legal surname, legal forename, date of birth (DOB), gender, year taught in (YTI) and post looked after arrangements, e.g. ceased to be looked after through a special guardianship order (SGO).

Generating Detail Reports

To select a single detail report, select the required report from the **Detail Report** drop-down list located at the top of the **Census Return Details** page. The selected report is generated automatically and displayed in your web browser, e.g. Internet Explorer®.

04| Completing the School Census Autumn Return

To run several detail reports, select **Multiple Reports** from the bottom of the **Detail Report** drop-down list to display the **Detail Reports** dialog.



All detail reports are selected by default. If any reports are not required, deselect the associated check box. Click the **Report** button to generate the selected reports, which are displayed in your web browser from where the data can be transferred to a spreadsheet, such as Microsoft® Excel, if required.

The report(s) are saved automatically in the **School Census Folder**, which was specified in the **Census Return** browser, e.g. S:\SCHOOL CENSUS. For guidance on navigating to files on your local workstation when you are working in a Hosted environment, please contact your System Manager or Local Support Unit.

The report is saved with a filename that is made up of the following data fields separated by underscores ('_'):

```
<LACode><SchoolNumber>_<SurveyType>_<LACode><LL><Year>_<SerialNumber>_<name of the report>_Report.html
```

For example:

```
8201050_SC3_820LL18_001_onroll_pupil_basic_details_report.html.
```



More Information:

Configuring the Census Folder on page 10

Transferring Report Data to a Spreadsheet on page 33

Printing a Report from your Web Browser

IMPORTANT NOTE: Any printed reports containing information that could identify a person (e.g. their name, address, UPN, etc.) should be used for validation purposes only and should not be retained. The Security Message (displayed at the top of each report) can be customised to include instructions for the destruction of the printed reports, if required.

1. With the generated report displayed in your web browser, select **File | Print** to display the **Print** dialog.
2. Ensure that the print settings are correct then click the **Print** button.
3. Click the **Close** button on the top right-hand corner of the web page to close the report and return to the census page.

Transferring Report Data to a Spreadsheet

Transferring a report to a spreadsheet application enables the data to be sorted, the column order to be changed, etc.

In your web browser, right-click the report then select the required option, e.g. **Export to Microsoft Excel**, from the drop-down list.

The spreadsheet contains the same level of sensitive information as the original HTML report from which it was transferred therefore, it is important that the file is saved to a folder with the same level of security.

Deleting Temporary Web Browser Files

It is recommended that, after viewing statutory returns reports, you delete any temporary web browser files to ensure that any cached data (i.e. data stored on the PC itself, which enables high-speed access to previously viewed data) is removed.

This prevents the information, e.g. copies of web pages that are stored in the local cache for faster viewing, remaining on the hard disk of the PC in the temporary directory, where they are not secure because they can still be accessed.

Deleting the cache in Internet Explorer 10

1. Open Internet Explorer 10, then select **Tools | Internet options** to display the **Internet Options** dialog.
2. Select the **General** tab.
3. In the **Browsing history** section, click the **Delete** button to display the **Delete Browsing History** dialog.
4. Ensure that the **Temporary Internet Files and website files** check box is selected then click the **Delete** button.

All temporary files (including any Statutory Returns reports files) that the browser has cached are deleted.

5. Click the **OK** button.

Deleting the cache in Internet Explorer 8 and 9

1. Open Internet Explorer 8 or 9, then click the **Tools** button located at the far right-hand side of the toolbar.
2. Select **Internet options** from the drop-down list to display the **Internet Options** dialog.
3. Select the **General** tab.
4. In the **Browsing history** section, click the **Delete** button to display the **Delete Browsing History** dialog.
5. Ensure that the **Temporary Internet Files** check box is selected then click the **Delete** button.

All temporary files (including any Statutory Returns reports files) that the browser has cached are deleted.

6. Click the **OK** button.

If a different web browser is in use, please refer to the help file applicable to that software package.

Producing the Summary Report

The Summary report enables the accuracy and completeness of the return to be assessed by the school staff involved in preparing the return. It can also be used to assist the Head Teacher in the checking of data before authorising the return.

NOTE: When the return is authorised, the Summary report is automatically generated and displayed in your web browser, e.g. Windows® Internet Explorer.

Generating the Summary Report

Click the **Summary** button located at the top of the **Census Return Details** page. The report is automatically displayed in your web browser, e.g. Internet Explorer®, but can be transferred to a spreadsheet such as Microsoft® Excel if required.

The report is saved automatically in the **Census Folder**, which was specified in the **Census Return** browser, e.g. S:\SCHOOL CENSUS. For guidance on navigating to files on your local workstation when you are working in a Hosted environment, please contact your System Manager or Local Support Unit.

The report is saved with a filename that is made up of the following data fields separated by underscores ('_'):

```
<LACode><SchoolNumber>_<SurveyType>_<LACode><LL><Year>_<SerialNumber>_<name of the report>_Report.html
```

For example: 8201050_SC3_820LL18_001_Summary_Report.html.

It is important that the Head Teacher checks all the information on the Summary report before the return is authorised. Your LA/DfE might request that a copy of the Summary report (which is automatically generated when the return is authorised) is signed by the Head Teacher and sent to the LA/DfE when the return has been authorised.



More Information:

Configuring the Census Folder on page 10

Generating Detail Reports on page 31

Transferring Report Data to a Spreadsheet on page 33

Authorising the Return on page 35

Deleting an Unauthorised Return on page 41

Editing an Unauthorised Return

The return details, e.g. **Description**, **School Information**, etc. can be edited via the **Census Return Details** page at any time prior to authorisation.

IMPORTANT NOTE: *An authorised return cannot be edited. If changes are required to an authorised return, use the **Copy** facility to produce a duplicate return (with a unique description) in which the changes can be made.*

1. Select **Routines | Statutory Returns | <census name>** to display the browser.
2. Ensure that the **Census Folder** and the **Security message for Reports** are correct then click the **Search** button to display any previously created returns. Unauthorised returns can be recognised by their .UNA suffix.
3. Double-click the required return. Alternatively, highlight the required return then click the **Open** button to display the **Census Return Details** page.
4. Edit the return details as required.
5. Ensure that the correct value for historical spot allowances has not been specified via **Tools | Setups | Employment Parameters**.
6. Click the **Create & Validate** button to display the **Validation Errors Summary** panel.
7. Resolve any errors and check any queries before running the Summary report and detail reports to ensure that the information is correct.
8. Repeat the editing process again, if necessary.
9. Click the **Save** button.



More Information:

Configuring the Census Folder on page 10

Specifying the Security Message for Reports on page 11

Resolving Validation Errors and Checking Queries on page 26

Producing Detail Reports on page 29

Producing the Summary Report on page 34

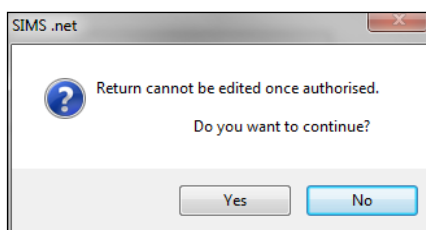
Authorising the Return

A return must be authorised before it can be submitted to your Local Authority or uploaded to the DfE COLLECT data collection website (as applicable to your school).

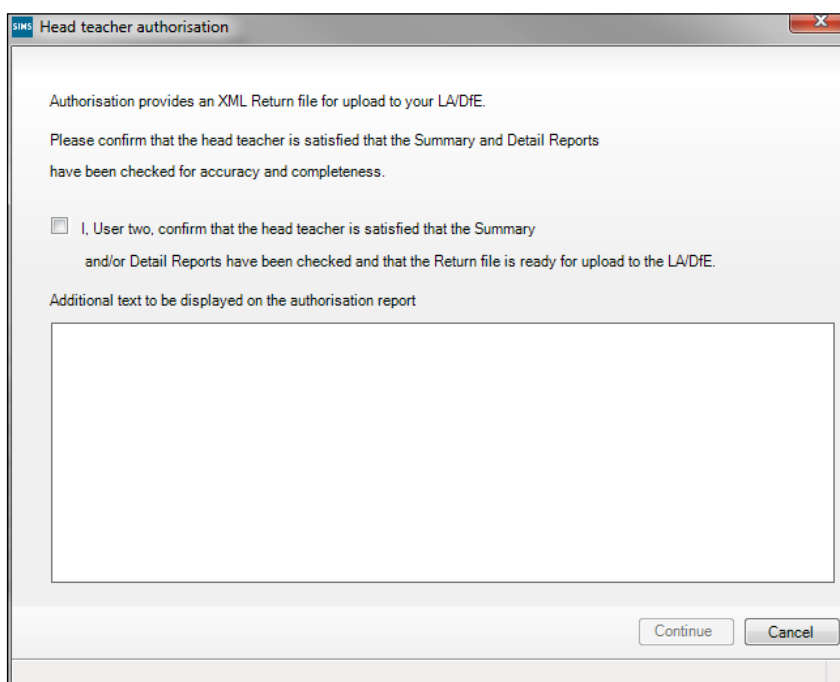
Before authorising the return, you should ensure that all the information displayed on the **Census Return Details** page is correct and does not require further editing. This is because it is not possible to edit details after the return is authorised. The Summary report can assist in reviewing the information.

04| Completing the School Census Autumn Return

1. Click the **Authorise** button. A message reminds you that the return cannot be edited once it is authorised.



2. Click the **Yes** button to continue or the **No** button to return to SIMS where edits can be made to the data before authorising.
If you choose to continue, the **Head teacher authorisation** dialog is displayed.



3. Enter any additional text to be displayed on the authorisation report, if required. This may be requested by your LA, e.g. to explain the reason for any validation failures.
4. Select the confirmation check box to confirm that the Head Teacher is satisfied that the Summary and/or detail reports have been checked and that the return file is ready for upload to your LA/DfE.

When the confirmation check box is selected, the **Continue** button is activated enabling you to complete the authorisation process.

5. Click the **Continue** button to authorise the return.
 - The Summary report, Authorisation report and Validation Errors Summary report are generated automatically and displayed in your web browser, from where they can be printed, if required.
 - The return file extension changes automatically from UNA (unauthorised) to XML (authorised).
 - All details, i.e. the reports and the XML file, are saved in the **Census Folder**, which was specified previously in the **Census Return for <season> <year> Term** browser.

All reports can be viewed via **Tools | Statutory Return Tools | Retrieve Authorised Census Return Files**. This routine also provides the opportunity to download the files to a different folder.

IMPORTANT NOTE: *Ensure that authorised personnel only have access to the download folder because the retrieved files contain sensitive information.*

For guidance on navigating to files on your local workstation when you are working in a Hosted environment, please contact your System Manager or Local Support Unit.

If you authorise a return and subsequently need to make amendments, you must either make a copy of the return and work on the copy, or create a new return.

After the return is authorised, reports based on cohorts can be created (via **Reports | Design Reports**), so that items collected in the return can be tracked. Provided that **Student** has been selected as the data area, the Statutory Returns sub-report is available for selection when specifying the fields to be included in the report (the last node).



Additional Resources:

Designing and Running Reports handbook



More Information:

Producing the Summary Report on page 34

Retrieving Authorised Census Return Files on page 38

Copying a Return on page 40

Submitting the Return

When the return has been completed and the Summary report has been signed by the Head Teacher (if requested to do so by your LA), the .XML file can be uploaded to the DfE COLLECT data collection website or sent to your LA, depending on the instructions you have been given.

The authorised return file is located in the folder previously specified in the return browser. For guidance on navigating to files on your local workstation when you are working in a Hosted environment, please contact your System Manager or Local Support Unit.

IMPORTANT NOTE: An authorised file cannot be edited. If you need to make changes to an authorised file, you must make a copy of the original file, rename it and work on the copy.



More Information:

Configuring the Census Folder on page 10
Copying a Return on page 40

Retrieving Authorised Census Return Files

Authorised returns are stored in your Document Management Server (DMS). The Returns Manager can download and run the reports associated with previous authorised returns enabling the data for the current return to be compared with that submitted previously.

1. Select **Tools | Statutory Returns Tools | Retrieve Authorised Census Return Files** to display the **Retrieve Authorised Census Return Files for <census name>** page.
2. Select the type of census required from the **Return Type** drop-down list to display a list of previous returns that match the selected criteria.
3. By default, the files **Download to** the folder specified in the census browser. To specify a different folder:
 - a. Click the **Select a Folder** button (...) to display the **Browse For Folder** dialog. Navigate to the location of the required folder then highlight it. If a suitable folder does not exist, click the **Make New Folder** button then enter a suitable folder name.

IMPORTANT NOTE: Ensure that authorised personnel only have access to the download folder because the retrieved files contain sensitive information.

For guidance on navigating to files on your local workstation when you are working in a Hosted environment, please contact your System Manager or Local Support Unit.

- b. Click the **OK** button to select or create the folder then return to the **Retrieve Authorised Return Files for <census name>** page where the chosen folder name is displayed in the **Download to** field.

4. Highlight the return you wish to retrieve then click the **Retrieve Files** button.

The authorised return file (i.e. the XML file) and all reports associated with the selected return are downloaded from your DMS to the specified folder. The folder and its contents are then displayed automatically, enabling you to open the required files in your web browser.

5. The contents of the specified folder can be viewed again by clicking the **Folder** button adjacent to the **Download to** field.

If you want to create reports based on cohorts, so that items collected in the return can be tracked, a sub-report is available (via **Reports | Design Reports**).

The **Statutory Returns** sub-report is available for selection only if **Student** has been selected as the Data Area.

When you **Select fields to be included in the report**, the **Statutory Returns** sub-report is located at the bottom of the list (the last node).

Three options are available for selection under this sub-report: **Authorised Date**, **File Name** and **Return Description**.

The screenshot displays three panels from a report design application:

- Select Data Area:** Shows a tree view with 'Student' selected under the 'People' category. Below the tree, there are navigation buttons: '<< Back', 'Next >>', and 'Finish'. A 'Report Summary' section is visible at the bottom, including a 'Report Name' field and several bullet points with instructions.
- Select fields to be included in the report (Left):** A list of fields is shown, including 'SEN...', 'School...', 'UDF', 'EMA Information', 'Email', 'Telephone', 'Performance Summary', 'Prior Attainment', 'Documents...', 'Intervention...', 'Classes', 'Courses', 'Assessment results', 'Parents', 'Family links', 'Contacts', 'Attendance marks', 'Lesson marks', 'Report Card', 'Exams', 'Group membership', 'Group membership (Historic)', 'Achievements', 'Behaviour', 'Student Conduct Informati...', 'Exclusions', 'Suspensions(NI)', 'Concessions', 'Agents Involved', 'Agencies Involved', 'Behaviour Student Invo...', 'Achievement Student Invo...', 'Detention Student invol...', 'Deposit Fees', 'Registration Fees', 'Advanced Payments', 'AD Provisioning', 'Communications', 'Performance Detail', 'Timetable Details', 'Partnership Guests', 'Initiatives', 'Homework', 'Post-16 Programmes of St...', 'Published Documents', and 'Statutory Returns'.
- Select fields to be included in the report (Right):** Shows the 'Statutory Returns' sub-report selected. The 'Caption' field contains '[Student]'. Below, three options are listed: 'Authorised Date', 'File Name', and 'Return Description'. The 'Return Description' option is selected, and its caption is shown as 'Statutory Returns [Count]'.



Additional Resources:

Designing and Running Reports handbook

Copying a Return

An unauthorised return can be copied and saved as a new return. This enables a 'snapshot' of a return to be taken at any time providing a backup of any manual changes that have been made to the return, for example before recalculating details.

This functionality can also be used to make a copy of an authorised return if the LA or DfE requires it to be resubmitted. The necessary corrections can then be made to the data. The copied return must be saved, created, validated and authorised before resubmitting.

NOTE: Ensure that the return you wish to replicate is not open at the time of copying.

1. Select **Routines | Statutory Returns | <name of census>** to display the census browser.
2. Click the **Search** button to ensure that the list of returns is displayed.
3. Highlight the file you wish to copy then click the **Copy** button.

A message requests confirmation that you wish to make a copy of the selected return.

IMPORTANT NOTE: Any values for attendance (where applicable), Early Years, Post Looked After Arrangements and Top-up Funding will not be copied but will be populated from the current values held in the database. The Create & Validate routine must be run to generate a new census file.

4. Click the **Yes** button to make the copy, which is then displayed in the browser as:
Copy of <description of selected file>.
5. To rename the copied return, highlight it then click the **Open** button to display the **Return Details** page.
6. In the **Census Details** panel, edit the **Description** then click the **Save** button.

IMPORTANT NOTE: The new **Description** must be unique for this return. SIMS will not save the data if a duplicate return description is found.

Deleting an Unauthorised Return

During the return process, a number of copies of the return may be created, e.g. to track progress. When the return has been authorised successfully, it is advisable to delete any versions of the return that are no longer required. This keeps the number of files in the storage folder and listed in the browser to a minimum, therefore removing confusion and lessening the risk of selecting the wrong return.

The delete routine can be used to remove unwanted returns at any time prior to the relevant return being authorised.

IMPORTANT NOTES: *When a return file is deleted, any associated files, e.g. Validation Errors Summary, detail reports, etc. that have been produced are also deleted.*

Any return files that have already been authorised cannot be deleted.

1. Select **Routines | Statutory Returns | <Return name>** to display the browser.
2. Click the **Search** button to ensure that the list of return files is displayed.
3. Highlight the return file to be deleted then click the **Delete** button. A message prompts for confirmation that the selected return should be deleted.
4. Click the **Yes** button to permanently delete the selected return file and all associated report files.

The deleted return file is removed from the browser and the storage folder, along with any associated reports.

Index

3

30 hour code 15, 31

A

academies 14

access rights 5

address details report 30

alternative provision placements 12

authorising 35

retrieving previous authorised census

returns 38

school census 35

C

calculating all details 12

census details

checking dates 12

editing description 12

configuring

school census defaults 10

copying

school census return 40

creating

a new return 9

and validating the return 25

creating & validating 25

D

data collected

school level 6

pupil level 6

default folder

defining 11

deleting

school census return 41

temporary web browser files 33

description

editing 12

detail reports

generating 31

producing 29

transferring to a spreadsheet 32

disability access fund 15, 31

E

early years data

30 hour code 15

disability access fund 15

extended funded hours 15

funded hours 15

hours at setting 15

report 31

updating 15

editing

an unauthorised return 35

census description 12

early years 15

post looked after arrangements 21

school information 13

top-up funding 19

errors and queries (validation)

resolving 26

extended funded hours 15, 31

F

free school meals

eligibility report 30

funded hours

no hours recorded 19

updating 15

H

hours at setting

no hours recorded 19

updating 15

L

loading

school census files 25

I | Index

N

new return
starting 9

O

on-roll basic details report 29

P

permissions 5

post looked after arrangements
editing 21
report 31

preparation
checking data 6
minimum version of SIMS 6
permissions 5

previous authorised census returns 38

printing
reports 32, 38
validation errors summary 26

producing
the return 9

Q

queries and errors (validation)
resolving 26

R

reporting
deleting temporary web browser files .. 33
designing reports 38
producing detail reports 29
address details report 30
early years report 31
free school meal eligibility report 30
generating detail reports 31
on-roll basic details report 29
post looked after arrangements
report 31
SEN report 30
top-up funding report 30
specifying security message 11

resolving
errors and queries 26

retrieving
authorised census return files 38

return
creating 9

S

school census return
authorising 35
configuring the storage folder 10
copying 40
create & validate 25
creating a new return 9
deleting 41
new 9
submitting 38

school information
checking 6, 13

security
deleting temporary files 33
specifying security message 11
SEN report 30

SIMS
version required to create return 6

steps to producing the return
flowchart 2
submitting the return 38

summary report
printing 32
producing 34

T

temporary web browser files
deleting 33

top up funding
top-up funding report 30
updating 19, 30

transferring
report data to a spreadsheet 32
submitting the return 38

U

| | |
|--------------------------------------|----|
| unauthorised return | |
| copying | 40 |
| deleting | 41 |
| editing | 35 |
| updating | |
| early years data | 15 |
| post looked after arrangements | 21 |
| top-up funding | 19 |
| uploading the return | 38 |

V

| | |
|--------------------------------|----|
| validating school census | 25 |
| validation failures | |
| resolving | 26 |