



Ealing standing advisory council on religious education

Annual report 2021-22

March 2023

Introduction

I am delighted to present this report on behalf of Ealing SACRE, highlighting the fantastic work of all SACRE members, my colleagues at the Ealing learning Partnership / Local Authority and RE Adviser to SACRE. 2021/22 has been another extraordinary year due to COVID-19 and yet a productive year as evidenced in this report.

Mirela Temo (Ealing Learning Partnership Adviser)

About the report

The Education Act 1996, Section 391 (6) and (7) requires that each year the Standing Advisory Council for Religious Education (SACRE) of each local education authority will 'publish a report as to the exercise of its functions and any action taken by representative groups on the Council during the last preceding year'.

This Annual report is presented in the new format developed by NASACRE in conjunction with the DfE (2021). The report contains 8 sections, supported by evidence and data.

Contents

Section		Page
	- Introduction and About the Report	
	- Foreword from the Chairs of SACRE 2021-22	
1.	- 1a. Overview - 1b. Ealing SACRE work plan 2021-22	
2.	- 2. Ealing context - 2a. Religion in Ealing - 2b. Ethnicity and Languages in Ealing schools	
3.	Religious education (statutory responsibilities) - 3a. Agreed syllabus and RE in schools - 3b. Standards and monitoring of RE - 3c. Teacher training and advice to schools - 3d. Other information	
4.	Collective worship (statutory responsibilities) - 4a. Standards and monitoring of collective worship - 4b. Determinations - 4c. Other information	
5.	Links to other bodies	
6.	SACRE involvement locally	
7.	SACRE's own arrangements - 7a. Professional and administrative support - 7b. Membership and recruitment - 7c. Attendance - 7d. Training - 7e. Finance	
8.	Appendices - 8a. Table of RS GCSE and A level results - 8b. Ealing SACRE members 2021-22 - 8c. Circulation details for the Annual Report	

Foreword from the Chair of SACRE 2021/22



I have been Chair of SACRE throughout the period covered by this report and was delighted to be reappointed to the role in May 2022. The main purpose of our meetings during the academic year 2021-22 has been to support and monitor the implementation of the new Agreed Syllabus which has been received warmly by our schools. I am sure teachers, LA staff and faith representatives will continue to build on our achievements of past years.

I want to thank school-based colleagues, SACRE members and LA advisers for their work in promoting the provision of high quality Religious Education and Collective Worship in our schools.

I also want to pay particular tribute to Angela Doherty who retired at the end of the summer term. Angela's work for SACRE as LA Adviser did so much to ensure that we were able to discharge our responsibilities efficiently. Following the departure of a number of other colleagues during the last year, I would like to say how grateful I am for all they have contributed to SACRE over several years. Finally, I must also extend my thanks to Lesley Prior for her continuous professional support.

I look forward to working with all of you in the coming year.

Cllr Harbhajan Kaur Dheer, Chair of the LB of Ealing SACRE from May 2021

Section 1

1a. Overview

The government legislation sets out both the structure and the remit of a local SACRE – principally, overseeing religious education (RE) and collective worship (CW).

In Ealing, the SACRE has developed its own nature and ways of how it operates which is described in this report.

There were three SACRE meetings held in the academic year 2021/22. Due to continuing sensitivities about Covid precautions, the meetings were held online. The table below includes an overview of the content of the meetings.

1b. Ealing SACRE work plan 2021/22

	Autumn 2021 16 November 2021	Spring 2022 25 January 2022	Summer 2022 28 June 2022
Collective worship (reflection)	Short version of collective worship guidance (LP)		
Determination guidance	Review of determination guidance (LP)		
Determination applications /renewals	Update on determination schedule (SI/AD) Determination renewal Havelock Primary School	Update on determination schedule Determination renewals Durdan's Park Primary School Wolf Fields Primary School	Update on determination schedule
RE guidance for schools	Documents to be reviewed (LP) Report on EGfL documents	Update on documents to be reviewed	Update on documents to be reviewed
Agreed syllabus	Update on implementation Advice on teaching, teaching materials, teacher training (MT/EL) Agreed syllabus monitoring (MT)	Update on implementation Advice on teaching, teaching materials, teacher training Agreed syllabus monitoring (MT)	Update on implementation Advice on teaching, teaching materials, teacher training Agreed syllabus monitoring (MT)
Annual report	Draft annual report (LP/AD) New annual report format	Final annual report (sent to DfE, NASACRE and EGfL)	
Constitution	New constitution implementation		
Membership	Update on membership and vacancies (Chair/clerk/AD)	Update on membership and vacancies	Update on membership and vacancies

Full agendas and documentation can be found at: [Committee details - Standing Advisory Council on Religious Education \(moderngov.co.uk\)](#)

Section 2

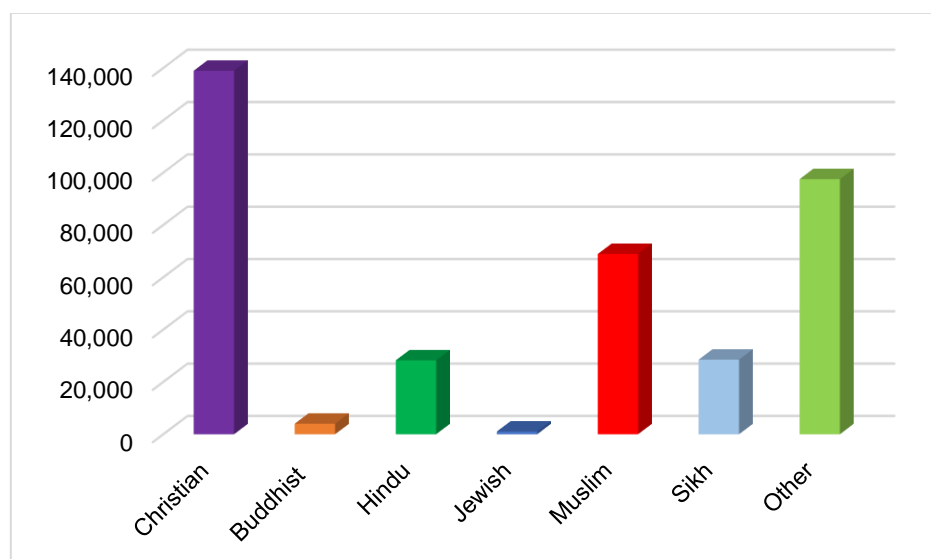
Ealing Context

2a. Religion

According to the latest [2021 census](#), Christians is the largest religious group within Ealing, accounting for 37.8% of the population.

Ealing has a Muslim population of 68,907 which is 18.8% of the population. Compared to England as a whole, in England circa 46% of the population is Christian, 7% is Muslim, 2% is Hindu, and Buddhists, Sikhs and Jews each is around 1%. The remainder is split between people with no religion and those who decided not to identify a religion.

Religious groups in Ealing



2b. Ethnicity and Languages in Ealing Schools

Ethnicity: The population of state-funded schools in Ealing borough is very ethnically diverse, with 85% of all pupils classified as being of minority ethnic origin in 2022. Ethnic minorities account for 85% of all primary school pupils (compared to 34% nationally in 2021), and 84% of high school pupils (compared to 32% nationally in 2021).

The breakdown of ethnicity for all state-funded pupils is as follows:

%	Main Ethnicities in Ealing
30%	Asian or Asian British
29%	White
14%	Black or Black British
9%	Mixed/Dual background
17%	Other Ethnic Heritage

Almost every school in the borough has pupils from all the broad ethnic groups. The most common ethnic groups in Ealing are Indian at 16%, White British 14%, Eastern European 9%, Asian Other 7%, Pakistani 6%, Somali 6%, Arab Other 6%, Afghan 5% and Black Caribbean 3%.

Languages spoken: 59% (32,475) of pupils in Ealing schools do not speak English as their first language, with a higher proportion of EAL in primary (62%) than secondary (56%). Ealing remains well above the 2021 national figures of 21% for primary and 17% for high schools. There are more than 160 different languages spoken in Ealing schools.

After English, the most common languages (each with over 2000 speakers) are Panjabi (8%), Arabic (8%), Polish (7%), Somali (5%) and Urdu (4%).

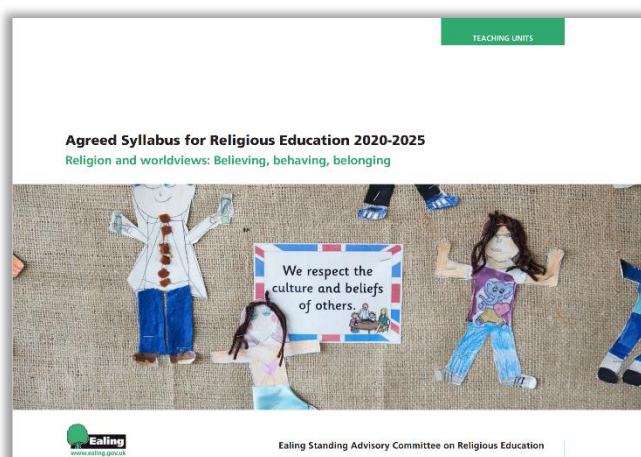
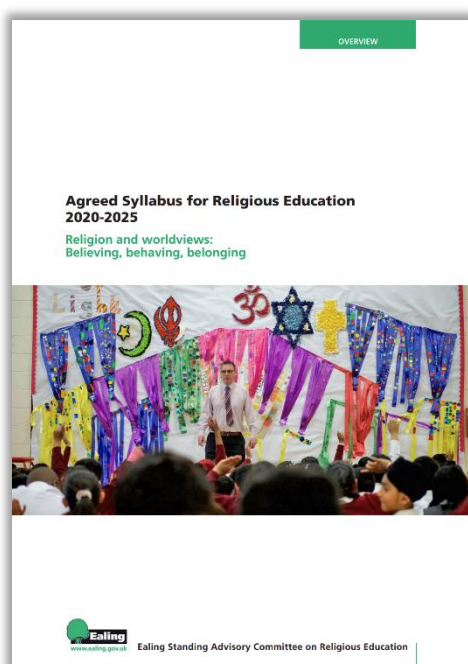
Section 3

3a. Religious Education (statutory responsibilities)

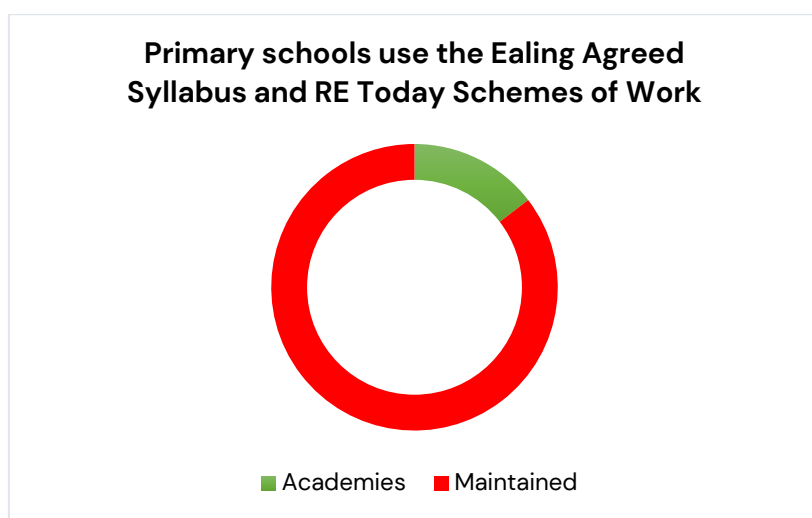
The local agreed syllabus and RE in schools

The Ealing Agreed Syllabus for religious education 2020–25: Religions and worldviews: Believing, Behaving and Belonging was agreed at an Agreed Syllabus Conference held online on 23 July 2020. The new syllabus is a complete revision from the previous syllabus and was approved at Cabinet on 13 October 2020.

The Ealing Agreed Syllabus has two documents: **Overview** and **Teaching Units** and there is a full implementation guide. All documents relating to the Agreed Syllabus can be found at: [RE curriculum | Ealing Grid for Learning \(egfl.org.uk\)](https://egfl.org.uk)

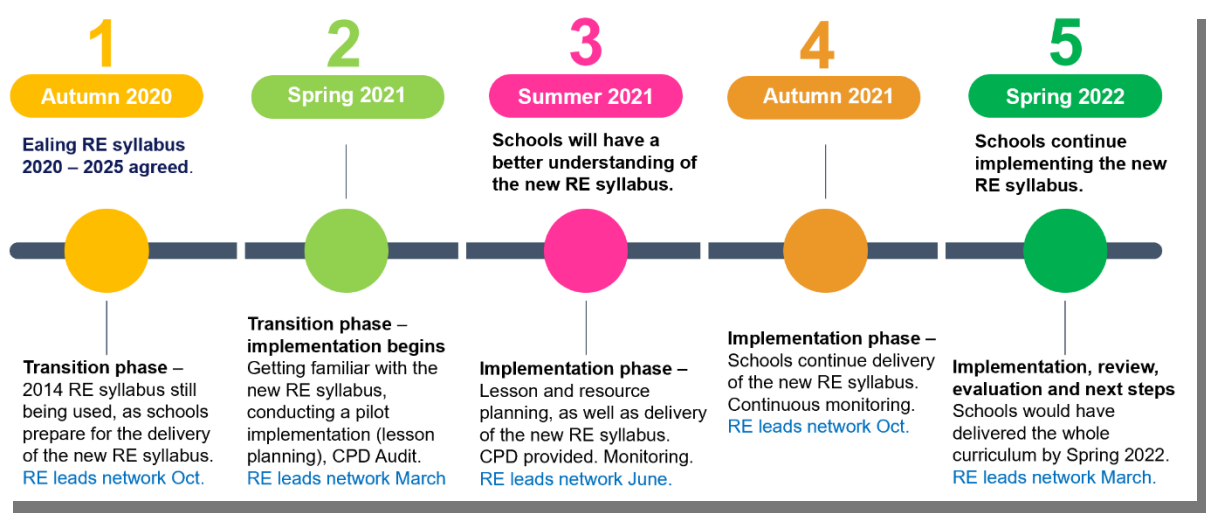


48 out of 80 primary schools have purchased the RE Today scheme of work (RTSW) which have been matched and adapted to the Ealing Agreed Syllabus. Most of our academies use the Ealing Agreed Syllabus. See the graph below.



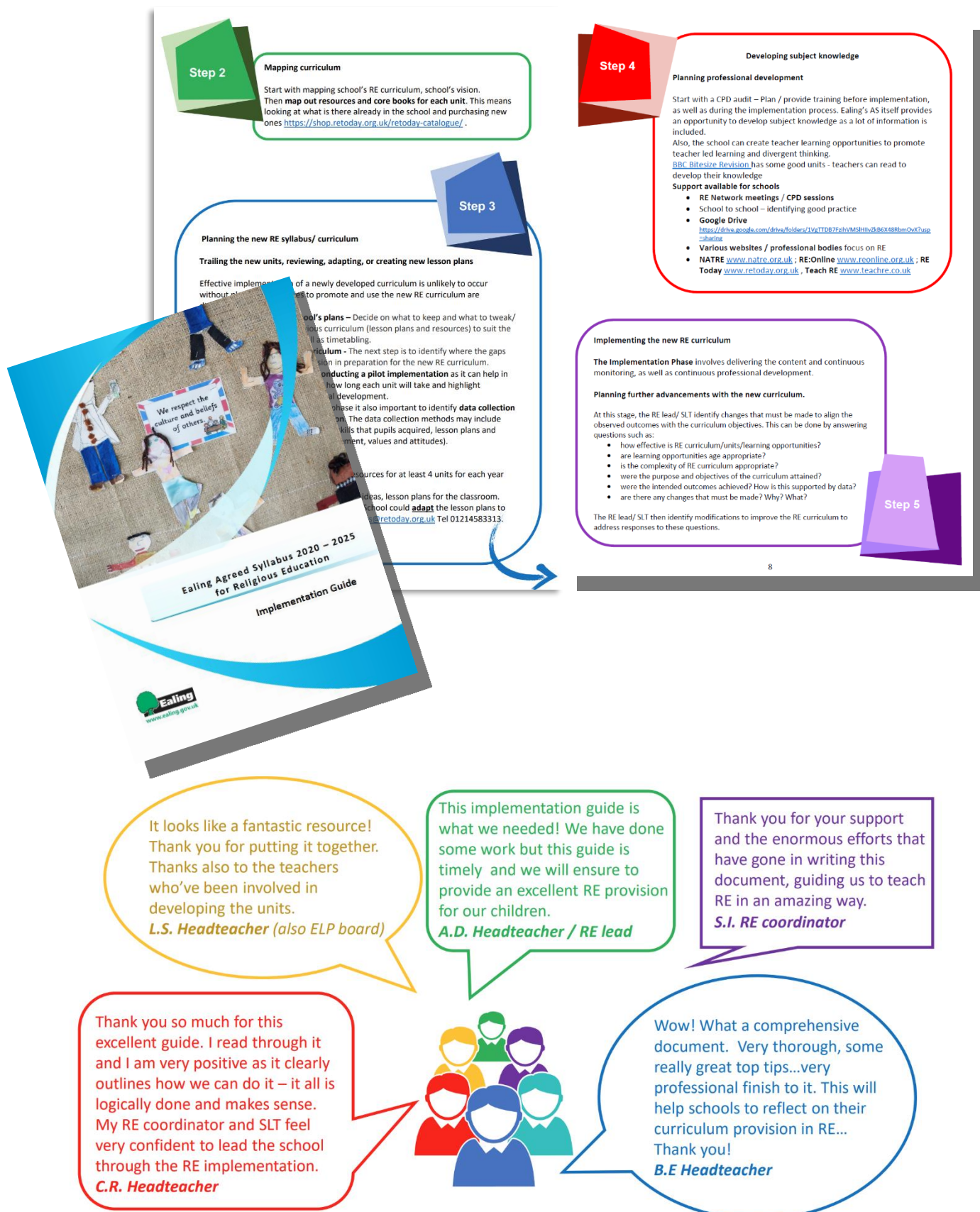
Implementation Timescale

As the new syllabus was agreed at a late stage in 2019-20, a transition period was agreed up to summer 2021 from which time the syllabus should be taught in full.



To support schools in implementing the new RE syllabus the ELP adviser developed a practical guide which has been shared with schools. Schools have said that they found it very useful the 'Implementation Guide' as it provides step by step procedures to guide them through the implementation of the Ealing Agreed Syllabus 2020-25 and a range of resources.

Implementation Guide



Source: Presentation shared at the SACRE meeting on 25 January 2021 (Mirela Temo – ELP Adviser in charge of the implementation of the RE curriculum)

3b. Monitoring the Agreed Syllabus

In 2021–22 the emphasis was on enabling schools to implement the new syllabus in full from summer 2021. Further monitoring of the implementation will take place in 2022–23.

Some of the highlights for 2021–22



Despite some challenges during Covid-19, schools did a sterling job in implementing the new syllabus.

Regular network meetings with RE leads in both primary and secondary schools. High attendance and very reassuring feedback.

A range of professional development sessions provided to primary school to aid leaders develop subject knowledge and confidence in capacity building.

Schools' increased confidence in understanding and delivering the new syllabus. Some very positive feedback from schools and SACRE. Data in the Secondary schools is very impressive.

Source: Report to SACRE (shared on 28 June 2022) Mirela Temo – ELP Adviser in charge of the implementation of the RE curriculum)

3c. Standards and monitoring of RE; Teacher training and materials and advice for schools

Approaches to the implementation of the curriculum

Many schools teach the subject through the exploration of key questions that are set out in the AS to help children to obtain a greater understanding of RE. Schools encourage children to be critical thinkers.

Planned activities enable pupils to explore themes and concepts within religion drawing on beliefs from a range of different faiths and world views. This enables pupils to become aware of their own beliefs and values, and to have a positive attitude and purpose in life.

In addition, schools plan education visits to enrich and enhance the pupil's learning experiences within the RE curriculum.

Some schools have developed progression of skills (ladders) with each year group, which enable pupils to build on and develop their knowledge and skills each year.

Teacher training and materials and advice for schools

ELP Advisers ensured support systems were in place to enable schools to provide an effective RE provision which meets the requirement in the new RE agreed syllabus.

Support for schools included:

- a) advice and guidance, professional development opportunities, identification of good practice through network meetings, school visits (light touch monitoring through a survey), newsletter and Ealing Grid for Learning.
- b) termly network meetings facilitated leadership development for capacity building and school improvement by making the best use of expertise to drive improvement and joint-practice where possible, exposure and use of recent research for innovation and improvement.

PROFESSIONAL DEVELOPMENT



Termly meetings for subject leaders of RE in primary and special schools led by Mirela Temo, ELP Adviser, took place online (via Teams) during 2021–22 due to Covid-19 measures.

The meetings were held on 15 October 2020, 11 March 2021 and 10 June 2021. Additional CPD sessions were also held on 7 May and 27 May in partnership with RE Today.

Participants were given opportunities to:

- explore practical strategies for teaching and learning in the subject
- plan for effective learning and teaching in RE
- analyse how and why there should be assessment in RE and how this can be done effectively
- provide feedback on the new Agreed Syllabus and schemes of work

The high school RE subject leader network is run as part of the Ealing Teaching School Alliance (ETSA) programme of subject networks and is led by Emma Lauder, Head of Y13 at William Perkin CE High School. The autumn and spring networks meetings and the summer conference were held online due to Covid 19. The meetings took place on 11 November 2020 and 10 March 2021 and the conference took place on 23 June 2021.

Feedback from both primary and secondary network was very positive.

Primary RE leaders and teachers also benefited from 3 very successful sessions designed and delivered by the RE Today.



Resources were made available during the RE network meetings and via [RE curriculum | Ealing Grid for Learning \(egfl.org.uk\)](https://egfl.org.uk)

3d. Other information

(Withdrawals and how the SACRE monitors, advises or supports schools with this, complaints)

SACRE has received no reports of pupils being withdrawn from religious education in 2021–22. There have been no complaints to SACRE in 2021–22 in relation to religious education.

Section 4

Collective worship (statutory responsibilities)

4a. Standards and monitoring of collective worship

During 2020–21 SACRE members supported by the SACRE Adviser Lesley Prior revised the collective worship guidance for schools. The new document was published online and circulated to schools in February 2021. The document and other resources to support collective worship can be found at: [Collective worship | Ealing Grid for Learning \(egfl.org.uk\)](https://egfl.org.uk/collective-worship/)

4b. Determinations

There are 14 maintained schools in Ealing with a collective worship determination and 4 academies. During 2020–21 five determinations were renewed. Two of the schools had deferred their renewal from 2019–20 due to Covid 19.

Determination renewals in 2021–22

School	Phase	Initial determination granted	Date of last renewal	Date of expiry	School notified / to be notified	Meeting date for renewal	Comment
Havelock Primary	Primary	20.11.1989 06.03.1990	01.11.16	31/10/21	Spring 2021	16/10/21	Confirmed
Wolf Fields Primary	Primary	20..1.1989 06.03.1990	16.02.17	15/02/22	Summer 2021	25/01/22	Confirmed
Durdan's Park Primary	Primary	20.11.1989	22.06.2016	21/06/21	Spring 2021	25/01/22	Confirmed Deferred to Spring 2022 (Covid 19)

The SACRE member visit process was continued based on the new guidance provided. The determination documentation is reviewed each year and in response to feedback from schools. It can be found at: [Determination | Ealing Grid for Learning \(egfl.org.uk\)](https://egfl.org.uk/determination/)

4c Other information

(Withdrawals and how the SACRE monitors, advises or supports schools with this, Complaints)

SACRE has received no reports of pupils being withdrawn from collective worship in 2021–22. There have been no complaints to SACRE in 2021–22 in relation to collective worship.

Section 5

Links with other bodies

Ealing SACRE is affiliated to The National Association of SACREs (NASACRE). Login details for the NASACRE website can be obtained from the SACRE clerk. Lesley Prior, SACRE Professional Adviser attended the NASACRE Conference in May 2022 and fed back to the summer SACRE meeting. SACRE members have access to a range of online training provided by NASACRE. The SACRE professional adviser is a member of the NASACRE Executive Group and is also a member of many other RE professional bodies and shares information from them at SACRE Meetings.

Ealing SACRE also has links with the Ealing Faith and Belief Forum [Home - The Faith & Belief Forum \(faithbeliefforum.org\)](https://faithbeliefforum.org)

Section 6

SACRE involvement locally

SACRE did not take part in any Governor training in 2021-22. Advice produced by SACRE is available at: [RE guidance for schools | Ealing Grid for Learning \(egfl.org.uk\)](https://egfl.org.uk)

Section 7

SACRE arrangements

7a. Professional and administrative support

How the LA supports the SACRE (clerking, adviser, links to council initiatives)

Role	Name	Contact details
Chair	Cllr Harbhajan Dheer	DheerHK@ealing.gov.uk
Clerk/s	Katie Sullivan Keith Broomfield	SullivanK@ealing.gov.uk broomfieldk@ealing.gov.uk
SACRE Professional Adviser	Lesley Prior	lesley.prior@london.anglican.org
ELP Adviser	Mirela Temo	mtemo@ealing.gov.uk
ELP Business Support	Saynap Isman	ismanS@ealing.gov.uk

7b. Membership, representation, and recruitment

Quoracy, issues and successes with recruitment

A full list of SACRE members is included in the Appendices. The constitution which was revised in 2020-21 provides clear information included in relation to membership and absences.

The constitution can be found at: [SACRE | Ealing Grid for Learning \(egfl.org.uk\)](https://egfl.org.uk)

Recruitment of new members

At the end of the year there were 8 vacancies:

Group	Members
Group A	African Caribbean Church 1, Free Church Federal Council 1, Hindu 1, Islam Sunni 1, Sri Guru Ravi Dasia Sabha 1
Group B	Church of England 2
Group C	Teachers' association 1

A key issue with recruitment is the lack of contact details for appointing bodies in Group A or the lack of response when the group is contacted. There is good representation of all the main religious and world view groups listed in the constitution. Reasons for members leaving included retirement and workload. Ealing SACRE continues to be supported by a large number of highly committed members.

Summary of membership and vacancies 2021-22

Area	Number	Representative groups	Details of authorising body/ contact details available	Follow up action
Membership	40	Other religions and worldviews (A) 20 Church of England (B) 6 Teacher Associations (C) 5 LA group (D) 9	3/20 Yes Yes Yes	<i>Members of group A to provide details of the authorising body</i>
Vacancies	8	Church of England 2 African Caribbean Church 1 Free Church Federal Council 1 Hindu 1 Islam Sunni 1 Sri Guru Ravi Dasia Sabha 1 Teacher Associations 1	Yes Yes Yes Yes No Yes Yes	<i>All with contact details have been emailed. Gatekeeping request sent to schools as a next step.</i>

7c. Attendance

All SACRE meetings in 2021-22 were quorate. Attendance has improved with online meetings.

View [Committee attendance – Standing Advisory Council on Religious Education](#)

7d. Training for SACRE members

SACRE members are encouraged to attend training provided by NASACRE. School based SACRE members or those with other links to education also attend local and national RE training including Diocesan training.

7e. Finance given to SACRE for its work

£10k is allocated to SACRE from the Dedicated Schools Grant (DSG). The funding contributes toward the cost of the SACRE Professional Adviser, primary RE network, secondary RE network and other costs e.g., NASACRE membership, NASACRE conference attendance etc.

SACRE meetings are clerked by the council's committees' services team as an integral part of the support provided for all formal meetings within the council's meetings programme.

Other leadership time (ELP Quality & Partnership lead) and administration costs e.g., contact with schools re determinations and following up on membership are covered by the Ealing Learning Partnership Business support and leadership budgets. Additional funding is allocated when needed for the renewal of the Agreed Syllabus.

Section 8

Appendices

8a. Table of GCSE & A Level Religious Studies results 2022

In 2022 students sat GCSE and A level exams again for the first time since 2019.

Key Stage 4

In 5 of the 11 schools without a religious designation (2 maintained schools and 3 academies) the whole cohort sits Religious Studies GCSE. Across Ealing 66% of students were taking RS GCSE in 2021 in state funded schools. In one school no students took RS GCSE in 2021 as they are moving to a two- year course.

GCSE	2017 (A*-C)	2018 (1-9)	2019 (1-9)	2020	2021 Teacher Assessed Grades (TAG)	2022 (1-9)
				Centre Assessed Grades (CAG)		
Number of students / %	1674 (61%)	1473 (52%)	1733 (59%)	2044 (66%)	1923 (57%)	2293 / 3228 (71%)
Progress 8	0.43	0.82	0.63			
% 9-4 / A*-C	77%	74%	75%			82%

Key Stage 5

120 students took Religious Studies A level in 2021 across 9 Ealing state funded high schools. 72% of the students (86) were in schools without a religious designation.

A level	2017	2018	2019	2020 Centre Assessed Grades (CAG)	2021 Teacher Assessed Grades (TAG)	2022
Number of students / %	147 (11%)	105 (8%)	122 (9%)	111	120	124 / 2242 (6%)
%A-E	100%	100%	97%			99%
%A-C	80%	87%	71%			91%
%A-B	57%	53%	40%			68%

8b. Ealing SACRE members 2021-22

Group A: Christian denominations and other religions, denominations of such religions and non-religious beliefs (20 members)

Group B – Church of England (6 members)

Group C: Associations representing teachers (5 members)

Group D: local authority group (9 members)

Group D appointed at Council 24 May 2022

Group A: Christian denominations and other religions, denominations of such religions and non-religious beliefs (20 members)		
Christian (4)		
1	African Caribbean Church	Vacancy
2	Free Church Federal Council	Vacancy
3	Roman Catholic (10/05/2016)	Ms Kim Burke
4	United Reformed Church	Rev Susan McCoan
5	Baha'i (1)	Ursula Patel Kian Altmann (Deputy)
6	Buddhist (1)	Mr Luxman Dissanayake
7	Hindu (2)	Mrs Aparna Sharma
8	Hindu	Vacancy
Humanist (2)		
9	Humanists UK	Ms Kath Richardson
10	West London Humanist & Secularist	Mr Oliver Murphy
Islam (4)		
11	Islam – Sunni	Mr Kasim Minhas Mr Sikander Minhas (Deputy)
12	Islam Sunni	Vacancy
13	Islam- Discover Islam	Mr Naif Sheikh Jahed Ahmed (Deputy)
14	Islam – Shi'a	Mrs Fatemah Moledina
15	Jewish (2)	Dr Marianne Izen
16	Liberal Jewish	Ms Megan Dick
Group D: local authority group (9 members)		
17	1	Cllr Harbhajan Dheer (Chair)
18	2	Cllr Kanwal Bains
19	3	Cllr Aysha Raza
20	4	Cllr Tariq Mahmood
1	5	Cllr Ghulam Murtaza
2	6	Cllr Tarept Sidhu
3	7	Cllr Miriam Rice
4	8	Cllr Gregory Stafford
5	9	Cllr Ball
6		Vacancy
Group C: Associations representing teachers (5 members)		
1	NASUWT	Mr Glen Burchell
2	ELP	Mrs Lori Greenglass (maternity spring/summer 2022)
3	NASUWT	Ms Emma Lauder
4	NEU	Mr Stefan Simms
5	NAHT /ASCL	Vacancy
Group D: local authority group (9 members)		
1		Cllr Harbhajan Dheer (Chair)
2		Cllr Kanwal Bains
3		Cllr Aysha Raza
4		Cllr Tariq Mahmood
5		Cllr Ghulam Murtaza
6		Cllr Tarept Sidhu
7		Cllr Miriam Rice
8		Cllr Gregory Stafford
9		Cllr Ball

8c. Circulation details for the Annual Report

The annual report will be sent to Ealing Council, Carolyn Fair Acting Strategic Director Children's Services, the DfE, NASACRE and schools, including governors. The report will be available for anyone to view on the Ealing Grid for Learning: [SACRE | Ealing Grid for Learning \(egfl.org.uk\)](https://egfl.org.uk)