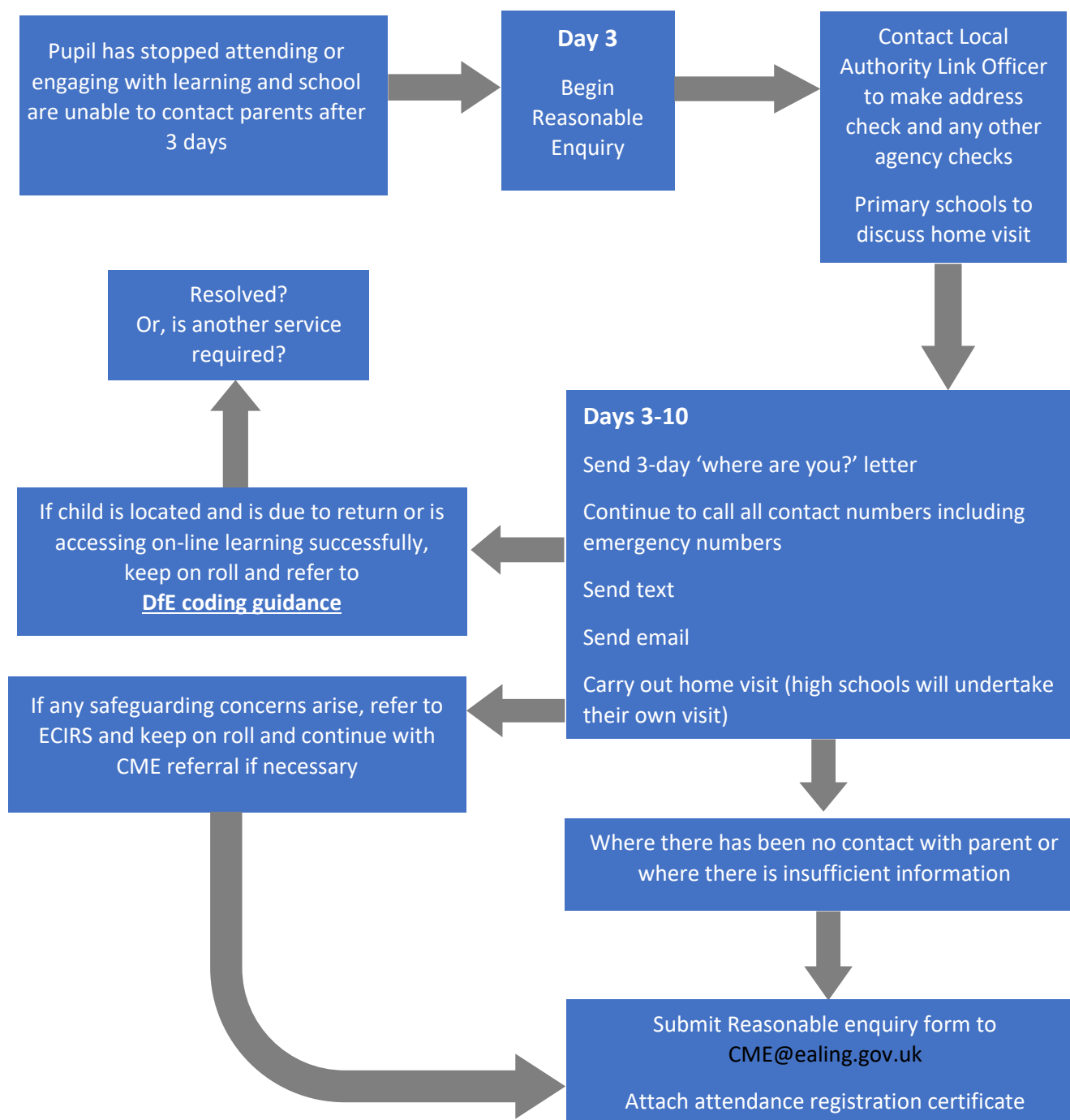


CME referral flow chart during COVID 19



When is it appropriate to take a pupil off roll?

20 days continuous absence, where there has been no communication between parent and school/Local Authority.

After both the school and local authority have tried to locate the pupil and reasonable enquiry has been undertaken, and this form has been returned to the local authority CME team who have agreed off rolling after council tax and social care checks, and/or confirmed referral made to CME in their new Local Authority.