

# Ealing Early Years Quality Partnership



 [www.ealingcpd.org.uk](http://www.ealingcpd.org.uk)

 [EarlyYearsPartnership@ealing.gov.uk](mailto:EarlyYearsPartnership@ealing.gov.uk)

 020 8825 9761

PVI Brochure 2025-2026



# Table of Contents



<b>1</b>	<b>About ealing early years quality partnership (EEYQP)</b>	
	About Us	Pg.5
	What We Offer	Pg.6
	Our Vision and Commitment	Pg.7
	Meet the Team	Pg.8 - 9
<b>2</b>	<b>Universal and Premium Support Model</b>	
	Universal and Premium Support Models	Pg.12
	What We Offer	Pg.13
	Subscription Offer	Pg.14
	Subscription Charges and Early Bird Offer	Pg.15-16
<b>3</b>	<b>The Yearly Focus Model (2025-2029)</b>	Pg.18
<b>4</b>	<b>Professional Development and Visits</b>	
	Hybrid Training	Pg.23
	Professional Development Breakdown	Pg.24
	Professional Development Map	Pg.25
	Padlet Relaunch	Pg.26
	CPD Journal	Pg.28
	Social Media Presence	Pg.29
	Early Start SEND Inclusion Team	Pg.30
<b>5</b>	<b>Frequently Asked Questions</b>	Pg.31
<b>6</b>	<b>Terms and Conditions</b>	Pg.37

**NEW**

Look for the new logo across this brochure for our refined offer for 2025-2026



*“We signed up with **Ealing Early Years Quality Partnership** for the first time at the beginning of this year. We are a fairly newly established setting, so the aim was to receive support in ensuring all was done to the highest possible standards. In our Early Years Consultant and her team, **we have found wonderful partners, knowledgeable and passionate, supportive and challenging at the same time.** The process we have gone through with them to improve our provision has been seamless. Our Early Years Consultant has been regularly in contact with us and is **always full of ideas and suggestions.** Through her, I met like-minded people in settings across the borough with whom we are going to stay in touch and visit each other's settings to ensure **we always offer the best to our children.** We will continue to sign up for the Partnership because we feel it is the **best support we can get and also the best value for money.**”*

**Leader, Private Day Nursery**







# 01

## About the Ealing Early Years Quality Partnership (EEYQP)

---





## ABOUT US

We feel very strongly **that every early years provision matters**; and is crucial in enabling our children's inspirational early years experiences and meaningful outcomes. That is, whether you're just starting out, or if you are an established childminder, private day nursery, preschool or nursery / reception class, we value your contribution to **highly inspirational early years provision** within the London Borough of Ealing.

The **Ealing Early Years Quality Partnership (EEYQP)** provides **expert practical support** for Ealing's early years registered childcare providers and schools. The purpose of our service is to create a **collaborative partnership** with our providers and to work together towards the shared goals of improving **quality of life** and **outcomes**. We aim to reduce educational gaps and debts and to ensure that every child and family has a **positive early years experience** which helps them to feel supported to thrive across their educational journey.



[www.ealingcpd.org.uk](http://www.ealingcpd.org.uk)



[EarlyYearsPartnership@ealing.gov.uk](mailto:EarlyYearsPartnership@ealing.gov.uk)



020 8825 9761





## WHAT WE OFFER...

We offer;

- expert early years advice
- guidance and support
- constructive and actionable feedback
- information on local and national updates.
- mentoring & coaching
- training and professional development

This is provided via our leaders' networks, training, visits, EYFS collaborative partnerships and curiosity circles.

We also **supportively stretch your pedagogy and practice** in your continuous quality improvement to lead towards highly inspirational early years education and leadership for the children and families that your setting serves.

Our support is grounded in building **mutual trust, affirming partnerships** and **empowerment** with individual and collective **wellbeing** at its core.



 [www.ealingcpd.org.uk](http://www.ealingcpd.org.uk)

 [EarlyYearsPartnership@ealing.gov.uk](mailto:EarlyYearsPartnership@ealing.gov.uk)

 020 8825 9761







## EALING EARLY YEARS QUALITY PARTNERSHIP

# VISION

### OUR COMMITMENT



#### **Inspire Courageous and Inspirational Leadership**

We lead with heart and purpose, driving meaningful change across early years settings.

#### **Hold High Expectations**

We believe in the capacity of every child, family, educator and leader and we expect the best, together.

#### **Champion Collaboration + Autonomy**

We work side by side, sharing expertise, honouring uniqueness, and building collective strengths.

#### **Create Lasting Impact**

We strive for deep, sustainable, highly inspirational practice, locally in Ealing, and across national and global early years landscapes.

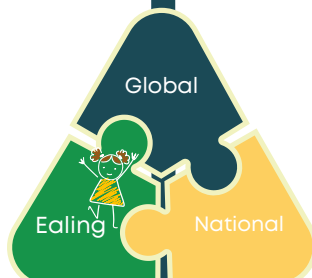
## OUR FOCUS

Optimal and sustained impact locally in Ealing, nationally and globally for; and by, all our Ealing:

- Children in early years
- Early years leadership (at all levels) within our early years settings and schools
- Early Years Consultants Team
- Early years partner services and organisations

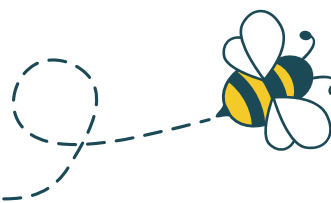
## OUR PEDAGOGY

In this brochure, we use the term pedagogy to describe the principles and practices that guide our understanding of children's development and learning. This includes how adults interact with children, the environments they co-create, and the experiences they provide to support children's growth, play and learning.





# MEET THE TEAM



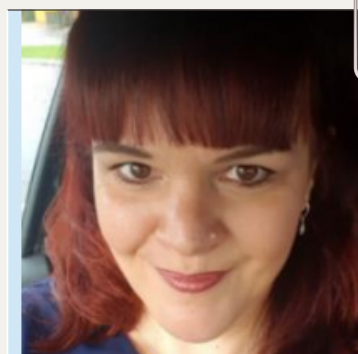
Samira John-Bailey

## Principal EYFS Adviser and Quality Lead

### Areas of interest;

- Strategic direction
- Highly inspirational early years leadership and practice
- Driving continuous quality improvement at all levels
- High performing teams and services; and collaboration
- Raising the profile of our specialist early years sector

[sjohnbailey@ealing.gov.uk](mailto:sjohnbailey@ealing.gov.uk)



Lizzie Huggett (nee Ross)

## Operational Lead for EYFS Quality

### Areas of interest;

- Developing inspirational leadership to consistently empower teams
- Improving outcomes for all children
- Ensuring leadership theory can be embedded into practice in accessible and impactful ways

[lross@ealing.gov.uk](mailto:lross@ealing.gov.uk)



Gwen Andrews

## Early Years Consultant

### Areas of interest;

- Passionate and forward thinking leadership
- Ensuring consistency in statutory and non-statutory requirements to ensure effective practice
- Developing high expectations approaches for all children

[AndrewsG@ealing.gov.uk](mailto:AndrewsG@ealing.gov.uk)



Begoña Toral Moratinos

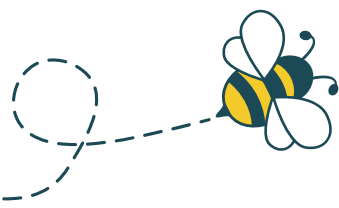
## Early Years Consultant

### Areas of interest;

- Embedding the knowledge of neuroscience and inclusion into everyday practice
- Equity and multiculturalism
- Effective early years pedagogy in school-based settings

[ToralMoratinosB@ealing.gov.uk](mailto:ToralMoratinosB@ealing.gov.uk)

# MEET THE TEAM



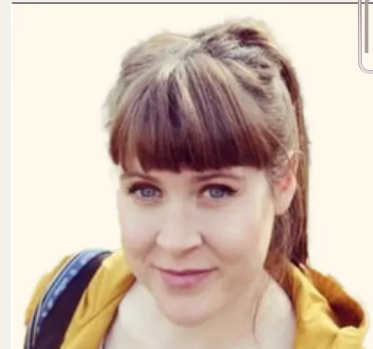
Natasha Henry

**Early Years Consultant**

**Areas of interest;**

- Advancing the quality of teaching and learning in meaningful ways
- Promoting parent-educator partnerships with a specific focus on fathers
- Raising the profile of Childminders

henryn@ealing.gov.uk



Kerry Murphy

**Early Years Consultant**

**Areas of interest;**

- Neurodiversity-affirming practice and Anti-ableism
- Hybrid Learning for Early Educators
- Improving quality of life for children with Learning Differences and Disabilities

kmurphy001@ealing.gov.uk



June Ryan

**Early Years Administrator**

**Areas of interest;**

- Developing streamlined administrative processes through the use of digital tools and programmes
- Co-ordinating aspects of the Quality Partnership
- Setting liaison

jryan@ealing.gov.uk



Sukhvir Kang

**Early Years Training  
and Development Administrator**

**Areas of interest;**

- Training and development administration
- Co-ordinating aspects of the Quality Partnership including training promotion and marketing
- Technical knowledge of CPD online

skang@ealing.gov.uk



# 02

## Universal and Premium Support Model

---





*just wanted to extend our gratitude and share how much we value the support we've received since rejoining the Ealing Early Years services.*

*As both a proprietor and manager, the guidance and encouragement from the EYCs have been truly invaluable. Their support has made a real difference in helping me feel confident, informed, and empowered in my role.*

*Many years ago, we were actively involved in collaborative working with the local authority, but for a time we stepped away from the service. Since returning, I've seen a significant enhancement in the quality and delivery of the support available. Ealing Early Years has become a pivotal part of improving our practice, offering meaningful training, expert advice, and a network of professional encouragement.*

*Thank you so much for all that you do. I have been part of Ealing for 18 years, and the support from the Early Years team has truly shaped how we deliver childcare in our community.*

**Leader, Private Day Nursery**



# UNIVERSAL AND PREMIUM SUPPORT MODELS



## Overview

Ealing Early Years Quality Partnership offers a range of support and services, under a **Universal** (available to all) and **Premium** model (paid subscription). This means that all settings can benefit from our high quality, specialist knowledge, skills, expertise and support, based on their current strengths and priorities. That is, whilst ensuring that continuous quality improvement remains at the heart of our practice in Ealing.



## Universal

We are dedicated to ensuring that all providers in Ealing have access to, and are engaged with, our Quality Partnership. Our goal is to foster a shared understanding of our vision, as well as our aspirations for every child and setting in the London Borough of Ealing. As part of the universal offer, you will have opportunities to:

- receive visits
- review and evaluate your quality and regulatory readiness.

However, we strongly encourage you to commit to the Ealing Early Years Quality Partnership Premium Membership for enhanced support via our rich and comprehensive training offer.



## Premium

We invite all early years providers to join our annual Premium Subscription, which unlocks a range of training benefits focused on continuous quality improvement:

- training (e-learning, face to face, hybrid)
- leadership networks
- leadership programmes
- annual conferences and summits
- paediatric first aid training (lower training fees)

All early years premium members who are part of our Ealing Early Years Quality Partnership Community will receive a stamp of participation and materials to promote your commitment to highly inspirational early years education and leadership.



# WHAT WE OFFER

## Universal and Premium

### Face to Face Visits

We offer in-person visits structured around a tiered model. This means that you will receive access to visits tailored to address your specific support needs and priorities, along with a designated early years consultant.

## Universal and Premium

### Online Meetings & Briefings

From the comfort of your computer, online meetings & briefings allow you to receive hybrid and effective support, addressing various aspects of leadership and practice. This flexibility not only enhances accessibility but effectively integrates technology in ensuring timely and personalised support with your early years consultants.

NEW

## Premium Members

### Face to Face Training & Networks

Our Ealing Early Years Quality Partnership provides a comprehensive range of face-to-face training sessions, including specialised training aimed at caring for and educating infants up to five-year-olds. Additionally, settings have the opportunity to participate in leadership networks, enabling them to connect with other settings, collaborate, and take time away from their environment to reflect and network.

## Premium Members

### E-Learning Platform

We are also delighted to announce the launch of our E-Learning Training Platform at [www.ealingcpd.gov.uk](http://www.ealingcpd.gov.uk) where settings can access a range of comprehensive and bitesize training courses from a range of national and international experts. You will also find live online training opportunities and a range of digital resources.

NEW



# SUBSCRIPTION OFFER



All settings can access **universal support** through our quality partnership, but by becoming a **premium member**, you unlock an exclusive range of benefits.

Premium membership offers access to a **comprehensive suite** of tailored support, in-depth professional development resources, and opportunities to learn from experts in the field.



## UNIVERSAL OFFER

- Visits via a 1-4 year tier cycle.
- Online meeting if Ofsted due.
- Email support.

**VISITS**

## UNIVERSAL OFFER

- Training in safeguarding and safer recruitment.
- Networks including race equity and Learning Differences and Disabilities
- Pay on Demand E-Learning and Digital resources

**PROFESSIONAL DEVELOPMENT**

## PREMIUM OFFER

- Named Early Years Consultant.
- Face to face visits via 1-4 year tier cycle.
- Online meetings including Ofsted due.
- Email support.
- Raising the Pedagogical profile Visits.

**VISITS**

## PREMIUM OFFER

Access to hybrid training offer including;

- E-learning
- Face-to-face training
- Leaders' Networks
- Curiosity circles
- Specialist Programmes
- Conferences
- Access to digital resources.
- Training from experts nationally and internationally.
- Part of the EEYQP Face-to-face and Online Community.

**PROFESSIONAL DEVELOPMENT**

AVAILABLE TO ALL SETTINGS IN  
RECEIPT OF FUNDING



PAID FOR SUBSCRIPTION

# HOW MUCH DOES A STANDARD PREMIUM MEMBERSHIP COST PER YEAR?

*\*Please see terms and conditions for price variations (i.e. signing up more than one setting)*



**£580\* PER  
ACADEMIC  
YEAR**

***For just £580 a year – less than the cost of a daily coffee, you get year-round access to professional development and support! The good news is we also have an Early Bird offer for this academic year...***



# EARLY BIRD OFFER

Sign up to the Ealing Early Years Quality Partnership by **27th June 2025** to receive an Early Bird Discount for the 2025–2026 membership year. If you are part of a group or chain of settings, discounted rates are available for additional settings that join.

Full pricing details are outlined below:

Setting	Standard Premium Cost	Early Bird Offer
One setting	£580	£480
Additional settings	£520	£420

Simply complete the booking form by the **27<sup>th</sup> June** which can be located at Ealing CPD online under > Communications to lock in the Early Bird Price:





*“As a manager, it's **very helpful to be able to receive advice and support from others and share back with my team. Our Early Year Consultant has supported us on how we can improve our learning environment and adapt ways we can support the children and their families. This has given me the opportunity to support my staff to develop best practice. It has been helpful to have our Early Year Consultant come into our setting and have one on one time with me about ways we can develop. My team has also benefited from the various training sessions, especially the whole setting training and I have seen improvements in how we provide for the children and families.**”*

Leader, Private **Day Nursery**



# 03

## The Yearly Focus Cycle (2025-2029)

---





# THE YEARLY FOCUS MODEL

## 2025-2026

Our visits and consultancy input are delivered with a yearly focus across a four-year cycle (2025-2029). Alongside your Early Years Consultant, you will agree collaboratively the strategic direction of your visits/input. Each year, you will receive input based on your setting's context (i.e. Ofsted due, setting priorities, capacity for inspirational practice). The Yearly Focus Model includes:

- **Leadership Visits**, focused on refining early years leadership in your setting
- The **Leadership Loop**, which are online “touchpoints” to ensure ongoing reflection and momentum towards quality improvement.
- **Targeted Visits**, such as more specialised input from within and beyond the partnership, such as **Advancing Inclusion visits** or support from the **Early Start SEND & Inclusion Team**.
- Online **Power Hours** where you can engage online with other settings and early years consultants for support and advice.

This approach ensures meaningful, ongoing support tailored to your setting's needs. An example of a visit cycle can be viewed below:

### Year

1

- **Leadership Visit (face to face)** to jointly review and evaluate the quality of early years leadership and practice

2

- **Early Start SEND & Inclusion Visit (face to face)** to facilitate children's differences and needs (individual child-level)
- Joined **Power Hours** to seek support and advice with peers and early years consultants.

3

- **Advancing Inclusion visit (face to face)** for Learning Differences and Disabilities Visit (setting-level).

4

- Joining a **Leadership Loop (online)** visit with early years consultants for quality check-in.
- **Raising the Pedagogical Profile visit (face to face)** peer-to-peer visit

**Both Universal and Premium Members will have access to visits**

**Please note:** the structure of visits will be dependent on the collaborative discussions with your early years consultant. This structure above is for illustrative purposes only.

For those on the **securing good** programme, support beyond your universal visit will be agreed in collaboration with your assigned Early Years Consultant

# Visit KEY POINTS

for Universal and Premium Members



## Key Points



- Visits are a **shared** and **collaborative** (side by side) process and **supportively-stretch** our pedagogy and practice.



- Visits are centred on striving towards or sustaining **highly effective** and / or **highly inspirational** early years leadership and practice; and mitigating risks in quality.



- We use a shared **reflective tool and quality framework** that enables us to capture the continuous quality improvement journey. Both the setting and consultant will collaboratively add and refine this document,



- If your visit indicates that your setting has high support needs, your setting may receive additional input to mitigate risk under our **Ealing Early Years Securing Good Programme**.

**Both Universal and Premium Members will have  
access to visits**

**Please note:** the structure of visits will be dependent on the collaborative discussions with your early years consultant. .



# A DAY IN THE LIFE OF A LEADERSHIP VISIT...



## Before the visit

You will receive an email from your consultant confirming the visit details and any initial focus areas. This is also a chance to ask any questions ahead of time and to review the **Reflective Tool and Quality Framework**.

## Together in Practice Walk

These are collaborative in nature and involve shared professional dialogue. We walk the environment together, noticing, reflecting, and discussing practice and connecting with the team in a supportive and curious way.

## Curiosity Conversations

### Conversations with Key People

- Consultants may speak with key people as part of the Together in Practice walk. Any deeper conversations will always be arranged in advance to ensure no one feels caught off guard.

### Information and documentation

- You may be invited to share information or documentation that helps deepen our shared understanding of your practice and approaches.

### Supportively Stretching Discussions

- On occasion we may stretch thinking or draw attention to issues that need priority addressing,

## After the Visit

You'll receive an updated Reflection Tool, summarising key insights and actions — a useful working document for your team moving forward.

## On the day of the Visit

### Warm Welcome & Check-In

- Remember to check our ID!
- Your consultant will arrive and begin with a short wellbeing check-in with the setting leader or key contact. This is also a space to ask questions, raise priorities, and share anything you would like to focus on.

### Introductions and Familiar Greetings

- In group settings, we may take a short walk around with the setting leader to say hello and introduce ourselves to the wider team. We want teams to feel part of the process rather than feeling 'done to'.

### Mapping the Visit

- Together, the consultant and setting leader will map out a flexible agenda based on the general visit structure and any identified priorities.

## Actions and Quality Review

### Reflections & Celebrations

- At the end of the visit, the consultant and setting leader will reflect together on strengths, celebratory moments, and areas for refinement.

### Actionable Next Steps

- We will agree on clear, achievable next steps to continue your journey.

### Quality Review

- We will also complete a quality review together, identifying wider priorities or areas of focus.



# 04

## Professional Development

---



# Hybrid TRAINING

for Premium Members



We are delighted to offer a comprehensive Professional Development Programme designed to support, inspire, and upskill early years professionals across a range of roles and settings. Our offer includes:

- **Face-to-Face Training**

Engaging, in-person sessions that bring learning to life and foster peer collaboration.

- **Specialist Training Opportunities**

Including targeted courses such as Specialist Baby Training and other age-specific or need-specific sessions.

- **Live Online Webinars**

Interactive webinars led by expert speakers and sector specialists, offering practical insights and up-to-date guidance.

- **Access to Our E-Learning Platform**

Learn at your own pace with flexible, on-demand training modules designed for busy professionals. You can access the e-learning brochure [here](#)!

- **A Wide Range of Digital Resources**

Practical tools, templates, videos, and guidance documents to support everyday practice and professional growth.

Our programme is designed to be dynamic, inclusive, and tailored to the evolving needs of our early years workforce.

**Premium members receive access to our full suite of professional development! View our training map on the next page...**

**Please note:** Universal members can access a number of our e-learning and face-to-face courses and conferences via a pay-as-you-go fee.



# TRAINING OFFER



Training Format		Description	Pathway
E-Learning Training	NEW	Our e-learning offer includes a range of high-quality training courses hosted on the Ealing CPD Online platform. These include comprehensive programmes, short courses, and commissioned content developed in collaboration with national and international experts. Whether you're looking to deepen your knowledge or explore a new area of practice, there's something for everyone.	<ul style="list-style-type: none"><li>We have a brochure dedicated to our e-learning offer and schedule. You can access the brochure by <a href="#">clicking here!</a></li><li>E-Learning can be booked via Ealing CPD Online. Please <a href="#">click here!</a></li></ul>
Live Online Webinars	NEW	Throughout the academic year, you'll have access to live online sessions offered at various times to suit different schedules and preferences. These sessions will be delivered by the Ealing Early Years Quality Partnership team, alongside a range of national and international experts, bringing you diverse perspectives and up-to-date insights.	<ul style="list-style-type: none"><li>Our full live online schedule will be released in September 2025, but you can book some sessions already by visiting Ealing CPD online. Please <a href="#">click here!</a></li></ul>
Statutory Training (for example, Safeguarding, Paediatric First Aid)		We offer a range of training courses that support statutory requirements, including safeguarding and paediatric first aid. Please note that some of these courses may incur additional costs.	<ul style="list-style-type: none"><li>Our statutory training can be booked via Ealing CPD Online. Please <a href="#">click here!</a></li></ul>
Leadership Programmes (Whole-setting INSET)	NEW	Each year, we offer leadership programmes designed for whole settings, providing opportunities for teams to develop a shared, consistent approach to inclusion, equity, and high-quality practice across the early years.	<ul style="list-style-type: none"><li>The training dates for our Leadership programmes will be released in November 2025. We will send an announcement when whole-settings are able to book. Please note: some of the these training days take place on Saturdays to allow whole-team attendance.</li></ul>
Leadership Workshops		Our leadership workshops are focused, practical sessions designed to strengthen the leadership skills within early years settings, supporting confident, reflective, and effective practice.	<ul style="list-style-type: none"><li>Our leadership workshops can be booked via CPD Online. Please <a href="#">click here!</a></li></ul>
Leaders Networks (F2F)		Our leaders' networks offer a valuable space to stay informed about sector updates, network, collaborate and explore key issues, developments, and opportunities within early years education.	<ul style="list-style-type: none"><li>Our Leaders Networks can be booked via Ealing CPD Online. Please <a href="#">click here!</a></li></ul>
Leaders Briefings (online)	NEW	Our leaders' briefings are delivered online and scheduled around key updates, ensuring you receive timely and relevant information in a way that makes the best use of your time.	<ul style="list-style-type: none"><li>Our Leaders briefings will take place online vis MS teams. You can book these via Ealing CPD online. Please <a href="#">click here!</a></li></ul>
Specialist Training (Development Phase Specific)	NEW	We offer a range of specialist training programmes tailored to different developmental phases. These include dedicated training for educating and caring for babies, 2-year-olds, 3-4 year olds and children in the reception year, supporting practitioners to meet the unique needs of each age group.	<ul style="list-style-type: none"><li>Our Specialist Training can be booked via Ealing CPD Online. Please <a href="#">click here!</a></li></ul>
Annual Conferences		Each year, we host conference events centred around a specific theme or focus, bringing together expert speakers and practitioners to inspire reflection, dialogue, and practice development.	<ul style="list-style-type: none"><li>Announcements will be sent for our upcoming conferences in November 2025.</li></ul>
Online Summits	NEW	Our online summit features a series of live and recorded sessions delivered over several days, offering insights from a diverse range of specialists across the early years sector.	<ul style="list-style-type: none"><li>Announcements will be sent for our upcoming Online Summits in November 2025.</li></ul>

# TRAINING MAP FOR UNIVERSAL AND PREMIUM MEMBERS



This training map guides you in identifying your training priorities based on your training route and membership:

Training Route	PVIs
Available to All Premium Members	Foundation, Connected, Commissioned and Live Pathways are available to all Premium subscribers. Universal Members can pay as you go for a small number of e-learning courses.
Highly Inspirational	<ul style="list-style-type: none"><li>• Pedagogical leadership e-learning</li><li>• Face to Face training and networks:</li><li>• Setting to setting support.</li><li>• Developing professional partnership with colleagues to provide wellbeing and leadership support and supervision</li><li>• Regular attendance at all PVI Leaders’ networks both online and face to face</li><li>• Attend Strategic leadership workshops aimed at senior leadership/owners and operational leads</li><li>• Attend strategic leadership networks for owners, operational leads and senior leadership.</li><li>• Leaders with areas of leadership specialism to attend wider networks (Race Equity, Learning differences, Baby room etc.)</li><li>• Attend Inclusive Leadership and Practice Programme, actively implement and demonstrate a commitment as part of the continual quality improvement cycle of the setting.</li><li>• Attend and present during annual Early Years Transition Conference</li><li>• Attend and present during annual Early Years Learning Differences and Disabilities Conference</li><li>• Attend, contribute and showcase practice in Pedagogical Leaders Network</li></ul>
Highly Effective	<ul style="list-style-type: none"><li>• Face to Face training and networks</li><li>• Regular attendance at all PVI Leaders’ networks both online and face to face</li><li>• Attend Strategic leadership workshops aimed at senior leadership/owners and operational leads</li><li>• Attend strategic leadership networks for owners, operational leads and senior leadership.</li><li>• Leaders with areas of leadership specialism to attend wider networks (Race Equity, Learning differences, Baby room etc.)</li><li>• Attend Inclusive Leadership and Practice programme and actively implement and show a commitment as part of the continual quality improvement cycle of the setting.</li><li>• Attend annual Early Years Transition Conference</li><li>• Attend Annual Early Years Learning Differences and Disabilities Conference</li><li>• Attend and contribute and showcase practice in Pedagogical Leaders Network</li></ul>
Securing Good Programme	<ul style="list-style-type: none"><li>• Attendance at ‘Securing Good’ training specifically for PVIs</li><li>• Attendance at PVI Leaders networks</li><li>• Attendance at PVI specific training</li><li>• Attendance at Ofsted due training (If relevant)</li><li>• Attend annual Early Years Transition Conference</li><li>• Attend Annual Early Years Learning Differences and Disabilities Conference</li></ul>

# WHAT WE OFFER



Premium Members

## Padlet

Along with access to a comprehensive training offer, we supplement our training and professional development by providing premium members with access to our dedicated Padlet pages where all relevant information is stored in one place. This means you can easily access presentation materials, updates and digital tools. We will be re-launching our Padlets in September 2025. Below are some of the Padlet pages to expect to see.

### **The A-Z of Learning Differences and Disabilities (SEND)**

A padlet dedicated to providing resources, signposts, information and digital tools to ensure you feel equipped and supporting overall inclusion.

### **The Early Years Welfare and Safeguarding Hub**

A Padlet which supports you to remain up-to-date with welfare and safeguarding requirements and recommendations. Access key documents, information, audit and digital tools as well as briefs on current issues related to welfare and safeguarding.

### **Professional Development Padlets**

For each course, webinar, network, briefing or programme we deliver, participants will be able to access all training materials via a dedicated Padlet.

### **The Pedagogy Corner**

There is so much information out there on how to develop our practice and pedagogy but for busy educators, you may not always have time to collate this information. Don't worry, we have got you with our Pedagogy Corner where we share all latest blogs, articles, resources and updates on having inspirational early years practice.





# F2F NETWORKS

## for Premium Members\*

As part of our professional development offer, settings are warmly invited to attend our range of leaders' networks and briefings, delivered both online and in person at varied times to suit different needs and schedules.

Led and facilitated by our experienced Early Years Consultants, these sessions offer:

- Local and national updates presented in an accessible and actionable format
- Opportunities for reflection and connection with peers and expert colleagues
- Workshops focused on sector priorities and best practices
- Guest speakers and specialist input to deepen and enrich pedagogical knowledge across our sector

These sessions are designed to inform, inspire, and strengthen professional practice in a collaborative and supportive environment.

Our current leaders' networks offer is outlined below:

1

- **PVI Networks led by** Lizzie Huggett providing essential updates to the sector.

2

- **Learning Differences and Disabilities (SEND) Network facilitated by** Kerry Murphy providing insights into diverse development and support.

3

- **Race Equity Network facilitated by** Gwendolyn Andrews providing equality and diversity insights and raising accountability in anti-racism.

4

- **Curiosity Circles facilitated by** the Early Years Consultants to delve deeper into pedagogy and practice (Premium Members Only).



AS WELL AS NETWORKS, WE ALSO OFFER ONLINE BRIEFING SESSIONS FOR KEY UPDATES AND INFORMATION SHARING. THE SCHEDULE CAN BE VIEWED AND BOOKED AT EALING CPD ONLINE. PLEASE [CLICK HERE!](#)

\* **Please note:** only the Learning Differences and Disabilities (SEND) Networks, PVI Leaders and the Race Equity Networks can be accessed by Universal members.

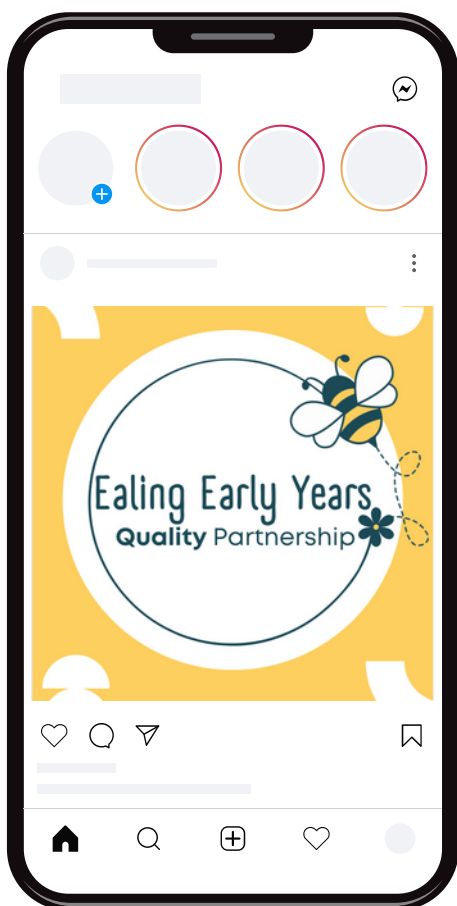


# DIGITAL CPD JOURNAL

All Premium Members receive access to our digital Continuous Professional Development (CPD) Journal, allowing you to document your learning throughout the year. Whether you attend face-to-face sessions, complete e-learning, or engage with professional content on social media, the CPD Journal offers a space to capture your journey. It is also a valuable resource for sharing during supervisions or demonstrating your ongoing commitment to professional development with external visitors.

Want a hard copy? Sign up to our waiting list today to receive updates about pre-orders for your very own CPD journal (available to universal and premium members).

**JOIN THE WAITLIST [BY CLICKING HERE!](#)**



# FOLLOW US ON SOCIAL MEDIA

From September 2025, we will be regularly posting to our social media pages on Instagram and YouTube. This will include information, insights, signposts and opportunities for professional development. You can follow us now to keep up-to-date with all our latest developments and training.

**Instagram:** @ealingeypartnership

**Youtube:** @EalingEarlyYearsQualityPartner



# EARLY START

## SEND Inclusion Team

### Individual Child Level

Early Start SEND Inclusion workers are based within **Early Start** and offer targeted and specialist support to families of children with additional needs including children with social and communication differences. This support can be at home, at the child's early years setting, or both.

Early Years Settings can also apply for SEN Inclusion Funding (SENIF) for children in their care, that can be used to enhance the setting and support them in developing staff skills, including strategies that can support individual children's needs and learning. This additional support is used to enhance the ordinarily available resources in place within the setting .

1

Apply Special Educational Needs Inclusion Funding (SENIF).

2

Access support and guidance for individual children in your setting.

3

Attend training and workshops related to SEND.

4

Benefit from a range of in-team expertise including Portage and Speech and Language Therapists.

**You can contact the Early Start SEND Inclusion Team Lead;  
Deborah Lawrence at [LawrenceD@ealing.gov.uk](mailto:LawrenceD@ealing.gov.uk)**



# 05

## Frequently Asked Questions

---



## Why has the subscription fee increased this year?

Our subscription offer has remained unchanged for several years. However, after listening to our workforce, it is clear there is a growing demand for training and professional development that reflects the unique needs of our sector. In response, we have made significant investments in expanding our offer and will continue to build a comprehensive programme that meets a wide range of learning preferences. This includes the launch of our e-learning platform, live online sessions with expert speakers, regular briefings, and professional networks.

We have also trialled a number of creative and innovative approaches, such as our Inclusive Leadership and Practice programme (joint whole-setting INSET), which have been well received. To continue delivering this breadth of training and professional development, we have updated our subscription pricing to reflect the increased capacity and value.



Throughout this brochure, you will notice the **‘New’** logo, highlighting areas where we have developed or refined our offer. There truly is something for everyone. By subscribing, you also join a community of forward-thinking leaders and educators working together to raise the quality and profile of early years education in Ealing and beyond.

## When will I receive the Ealing Early Years Quality Partnership brochure?

The subscription brochure is usually distributed during the Summer Term, ahead of the upcoming academic year. The brochure and booking form will be available on Ealing CPD online under the Communications tab.



## How do I know if our setting has purchased the subscription?

Please check with the CPD leader, finance officer or administrator at your setting to confirm whether your subscription has been purchased.

## If we subscribe partway through the year, is the fee pro rata?

As outlined in our Terms and Conditions (2025-2026);

- *“Newly Ofsted-registered settings can book membership in-year within six months of their Ofsted registration date and will be charged a proportion of the cost dependent on the Ofsted registration date.*
- *However, all other settings will be charged the full annual rate irrespective of the start of their subscription date”.*

## When will I receive my invoice?

Invoices are sent via email during the October half term. Please check your junk or spam folder if you do not see it in your inbox.

## Can I request an early invoice?

Unfortunately, early invoices are not available.

## Who can I contact for billing or payment queries?

📞 020 8825 5212

✉ [corporatecollectionservices@ealing.gov.uk](mailto:corporatecollectionservices@ealing.gov.uk)

To make a payment:

📞 020 8825 9940 (24-hour line)

🌐 [www.ealing.gov.uk/payinvoice](http://www.ealing.gov.uk/payinvoice)

🕒 Opening hours: 9am – 5pm, Monday to Friday



## Can I pay the invoice in instalments?

Payments can be arranged via instalments via Ealing Corporate Collections. However this can only be done once invoices have been issued. Once the invoice has been received, you are required to ring Corporate Collections to arrange the payment plan.

For payment arrangements:

 020 8825 5212

 [corporatecollectionservices@ealing.gov.uk](mailto:corporatecollectionservices@ealing.gov.uk)

To make a payment:

 020 8825 9940 (24-hour line)

 [www.ealing.gov.uk/payinvoice](http://www.ealing.gov.uk/payinvoice)

 Opening hours: 9am – 5pm, Monday to Friday

When making a payment, please ensure you only include the invoice number in the payment reference. Adding extra information may prevent your payment from being correctly matched in the financial system.

Please see an example before:

**Invoice number:**

 012345678

**Invoice number:**

 ABC Nursery 012345678




## What if I am part of a group of settings or chain, and I want to sign up more than one setting?

We welcome and encourage you to sign up other settings within your group or chain. For subsequent settings that sign up to the Ealing Early Years Quality Partnership, you receive a discount for each subsequent setting. The costs are as follows:

1. The first setting is charged a Standard Premium Subscription at **£580** per academic year.
2. Each subsequent setting is charged a discounted Premium Subscription at **£520** per academic year.

## Can I book Early Years Consultants for INSET training at my setting?

Each year, the team have a set allocated number of days to offer INSET training to settings. However, these are based on a first come, first serve basis and are subject to availability on your specified INSET days. If you are potentially interested in booking an INSET, please send your query to [trainingsupport@ealing.gov.uk](mailto:trainingsupport@ealing.gov.uk). Please clearly state the date, location and time of your INSET. Please note: INSET training is an additional charge to the premium membership but does include a discounted price.

Full Day Face-to-Face INSET (Premium Members)	£800 (up to 6 hours)	
Half Day Face-to-Face INSET (Premium Members)	£500 (up to 3.5 hours)	
Online INSET (Premium Members)	£300 (up to three hours)	

Full Day Face-to-Face INSET	£1200 (up to 6 hours)	
Half Day Face-to-Face INSET	£800 (up to 3.5 hours)	
Online INSET	£500 (up to three hours)	



## Can I pay a fee for additional early years consultants visits?

Each year, the team have an allocated number of days to potentially offer additional visits at a cost. Subject to this availability, you can request a half-day consultancy support visit in addition to your universal offer.

Premium: £400

Universal: £600

Please note the half-day includes administration and reflective tool. However, capacity and cost means it usually makes more sense to sign up to the premium partnership which offers significant value for money.

## My setting is not in the London Borough of Ealing. Am I still able to sign up to the premium partnership?

If you are out of borough, you can subscribe to our e-learning subscription meaning you get access to all our online courses. Additionally, you can also pay to attend live online sessions including webinars, conferences, and summits.

<b>E-Learning Subscription Only (Whole-setting)</b>	<b>£580</b> (£480 if the booking form is received by 27 <sup>th</sup> June 2025)
<b>E-Learning Subscription Only (Individual)</b>	<b>£130</b> per year
<b>Online Live Sessions</b>	<b>£30</b> per person per live session + access to the recording for 90 days.

## Can I request who my named Early Years Consultant will be?

Consultants are assigned from within the team based on various factors. While settings may suggest a preference, we cannot guarantee it.



# 06

## Terms & Conditions

---

# Terms and Conditions (2025/26)

**Your EYC will work with you to agree how your support visits and training will be delivered, based on your setting's needs and preferences.** This could include in-person visits, phone-based support, or online visits and training via Microsoft Teams. We aim to offer a flexible and responsive approach to ensure you can access the right support at the right time. Queries and booking forms should be sent to **EarlyYearsPartnership@ealing.gov.uk** and please CC: **EarlyYearsServices@ealing.gov.uk**.

- The Deadline to return your subscription booking form is by: **Friday 27<sup>th</sup> June 2025.**
- Newly Ofsted-registered settings can book membership *in-year* within six months of their Ofsted registration date and will be charged a proportion of the cost dependent on the Ofsted registration date. However, all other settings will be charged the full annual rate **irrespective of the start of their subscription date.**
- **To inform our partnership working**, it is an expectation that you notify us of any changes within your leadership team. This helps us maintain accurate records and provide relevant support.
- **Visits (setting-based or remote)** will be arranged with your allocated Early Years Consultant (EYC). Visits cannot be carried over into the next year. All time allocated includes meetings, research, preparation, and delivery. Once booked, cancelled visits may not be able to be rearranged depending on EYC availability and capacity.
- **Training Courses and INSET**  
The annual subscription must be paid in full before settings can access the full complement of the training offer and subsidised training (Paediatric First Aid).
  - **INSET Cancellations:** One full week (5 working days) must be given for bespoke INSET cancellations, or the full payment will be required.
  - **Council Venue Training Cancellations:** Four full working days' notice is required to cancel training at Ealing Education Centre (EEC) or other council venues, or the full payment will be required.
  - **Safeguarding Course Cancellations:** Four full working days' notice must be given, or a **£50 non-attendance fee** per confirmed delegate will apply.
- **Training Materials and Presentations** shared with settings are for internal use only. They remain the intellectual property of the Ealing Early Years Quality Partnership and must not be copied, edited, or shared beyond the setting.
- **Agency Childminders** can subscribe to the *Premium Subscription* and:
  - Attend training provided by the Ealing Early Years Quality Partnership (chargeable courses invoiced directly).
  - understands that needs or concerns identified by the Ealing Early Years Quality Partnership will be shared with the relevant childminder agency.
- **Quality Assurance** – Our service quality is regularly monitored and evaluated. Settings/providers will be asked for feedback to support continuous quality improvement.
- **Payment** – By signing the booking form, the provider agrees to purchase and pay for annual membership.
  - **Invoices will be issued by October 2025 (half-term)**



- **Payment due by 31st December 2025**
- Payment must be made in full before accessing training, networks, conferences, e-learning etc at membership rates.
- Payments can be arranged via instalments via Ealing Corporate Collections. However this can only be done once invoices have been issued. Once this invoice has been received, you are required to ring Corporate Collections to arrange the payment plan.

For payment arrangements:

 **020 8825 5212**

 **[corporatecollectionservices@ealing.gov.uk](mailto:corporatecollectionservices@ealing.gov.uk)**

To make a payment:

 **020 8825 9940** (24-hour line)

 **[www.ealing.gov.uk/payinvoice](http://www.ealing.gov.uk/payinvoice)**

 Opening hours: **9am – 5pm, Monday to Friday**

#### ● **Early Bird versus standard Premium membership -**

To support your planning, we offer a discounted Early Bird Premium Membership rate for settings that confirm their return by Friday 27th June 2025.

Settings that submit their application after this date will be charged the Standard Premium Membership rate, as outlined in the brochure and application form.

<b>Membership Type</b>	<b>First Site Fee</b>	<b>Additional Site Fee</b>	<b>Deadline for Confirmation</b>	<b>Payment Deadline</b>
<b>Early Bird Premium</b>	<b>£480</b>	<b>£420</b>	<b>By Friday 27th June 2025</b>	<b>31st December 2025</b>
<b>Standard Premium</b>	<b>£580</b>	<b>£520</b>	<b>After Friday 27th June 2025</b>	<b>31st December 2025</b>

- All members have until 31st December 2025 to make payment.  
Payment plans can be arranged with the Corporate Collections Payments Team after your invoice is issued.
- **Payments for settings part of a group or chain -** Settings that are part of a group or chain receive a discounted price for any additional setting that is signed up to the subscription. The pricing format is as follows:

<b>The first setting will be charged standard premium membership price:</b>	<b>£580 for setting</b>
<b>The subsequent settings will be charged the discounted premium membership cost:</b>	<b>£480 per additional setting</b>

- **Non-Payment** – If payment is not received by **31st December 2025**, the setting's debt will be referred to the Debt Collection team/agency.
- **Scheduled Visits** – Visits may be rescheduled due to unforeseen circumstances. The EYC will notify settings promptly. Likewise, settings should inform their EYC as soon as possible if they need to reschedule.
- **Code of Conduct** – In line with local authority conditions, any setting that is abusive or obstructive to the Early Years team may be:
  - Referred to the Ealing Early Years Settings Review Group
  - Removed from the Ealing Family Services Directory
- **Complaints Procedure** – If concerns arise about service quality:
  - First discuss the matter with your EYC
  - If unresolved, contact Operational Lead for EYFS Quality **Lizzie Huggett** (nee Ross) at [lross@ealing.gov.uk](mailto:lross@ealing.gov.uk).
- **Promotion** - Settings will be able to access a range of resources to promote their membership including a digital stamp, merchandise (subject to availability) and digital tools. This signifies commitment to a high-quality, inspirational early years setting.



# Thank You



## Contact Information



[www.ealingcpd.org.uk](http://www.ealingcpd.org.uk)



[EarlyYearsPartnership@ealing.gov.uk](mailto:EarlyYearsPartnership@ealing.gov.uk)



020 8825 9761