

Now Live at www.ealingcpd.org.uk



Ealing Early Years CPD Online



 www.ealingcpd.org.uk
 trainingsupport@ealing.gov.uk
 020 8825 9761

Children and Families



About our e-learning

Welcome to the launch of our Ealing Early Years Quality Partnership E-Learning Platform! We are thrilled to announce the launch of initial ten courses which will be made available over the coming weeks. We are also going to provide an overview of courses to be released for 2025/26. As we begin our hybrid training initiative, we invite all premium partnership members to explore **the exciting courses available. Simply ensure you have a Premium Membership and an Ealing CPD online account to get started. This short guide outlines the course schedule** and introduces you to some of our **early years experts.**

If you have any queries, please contact **trainingsupport@ealing.gov.uk**





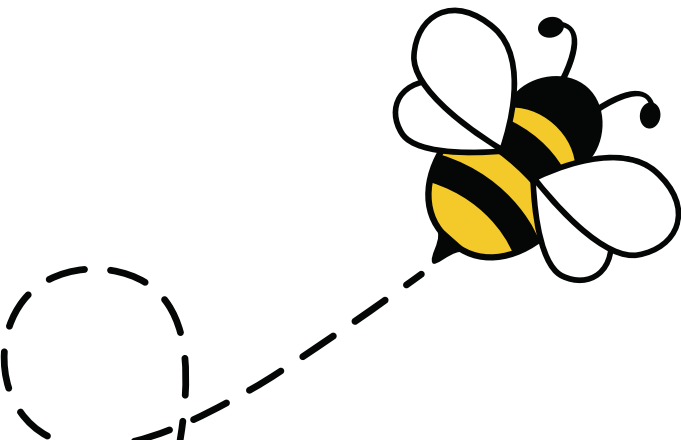
Training Pathways

There are a number of training pathways that you will be able to access on Ealing CPD Online. Below is a description of our four main e-learning pathways which complements our face-to-face training offer.

Foundation Pathway	The Foundation Pathway refers to our comprehensive courses , designed to be completed over time as you work through several videos and activities. The courses are broken down into learning explorations , allowing you to complete them at your own pace. These courses are aimed at leadership at all levels (unqualified/newly qualified practitioners to senior leaders).
Connected Pathway	The Connected Pathways are short courses , such as a 20-minute webinar and activity, designed as bite-sized CPD. They are called Connected Pathways because they complement the Foundation Pathways. For example, "Environments That Enable" is a Foundation Pathway, while "Sensory Compatibility in Your Environment" is a Connected Pathway. These courses are aimed at leadership at all levels (unqualified/newly qualified practitioners to senior leaders).
Commissioned Pathway	Our Commissioned Pathways refer to training provided by a diverse range of early childhood specialists, both within and beyond our borough. This includes national and international speakers covering a variety of CPD topics. You can find information about our expert speakers in this booklet. The Commissioned Pathways are forThese courses are aimed at leadership at all levels (unqualified/newly qualified practitioners to senior leaders).
Live Pathway	From September 2025 , we will also be introducing live webinars which will be recorded and stored on our Ealing CPD Platform.



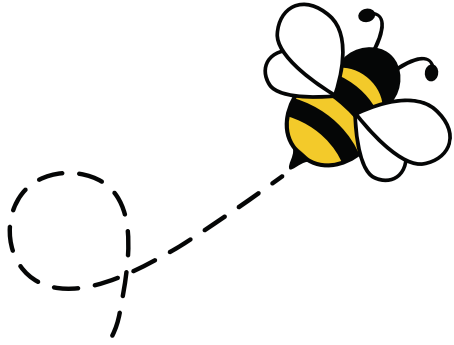
E-Learning Courses (Summer Term)



Course Title	Pathway	Theme	Trainer	Release date
Environments that Enable (Indoors)	Foundation	Environment	Ealing Early Years Quality Partnership	29 th April 2025
Sensory Compatibility in Early Childhood	Connected	Environment	Ealing Early Years Quality Partnership	29 th April 2025
Purposeful Provision Part 1 - Continuous Provision	Commissioned	Environment	James Tunnell	29 th April 2025
The Whole Child Alphabet	Commissioned	Environment	Stacy Benge	26 th May 2025
Side by Side: Reimagining Partnership with Parents x Carers	Foundation	Partnerships	Ealing Early Years Quality Partnership	26 th May 2025
It Starts with Us: Unpicking Early Educator Wellbeing and Wellbeing	Foundation	Environment	Ealing Early Years Quality Partnership	26 th May 2025
An Introduction to Gestalt Language Processing (Part One)	Commissioned	Learning Differences and Disabilities	Alice Hill	26 th May 2025



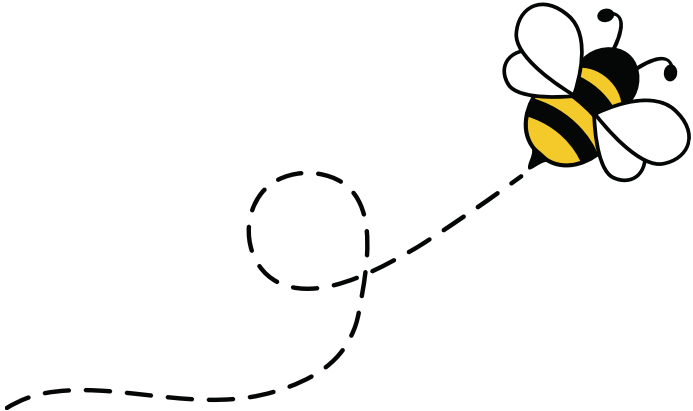
E-Learning Courses (Autumn Term)



Course Title	Pathway	Theme	Trainer	Release date
Take Action on Distraction	Commissioned	Environment	Dr Gemma Goldenberg	1 st September 2025
Understanding Behaviour in Early Childhood	Commissioned	Child Development	Jen Foster	1 st September 2025
Environments that Enable (Outdoors)	Commissioned	Environments	Millie Colwey	1 st September 2025
An Introduction to Gestalt Language Processing (Part Two)	Commissioned	Learning Differences and Disabilities	Alice Hill	1 st September 2025
The Together Time: Rethinking Carpet Time, Circle Time & Story Sharing	Foundation	Environment	Ealing Early Years Quality Partnership	1 st September 2025
Whole-Child Foundations: Physical Development	Foundation	Child Development	Ealing Early Years Quality Partnership	1 st September 2025
Introducing Sensory Stories	Connected	Learning Differences and Disabilities	Ealing Early Years Quality Partnership	1 st September 2025



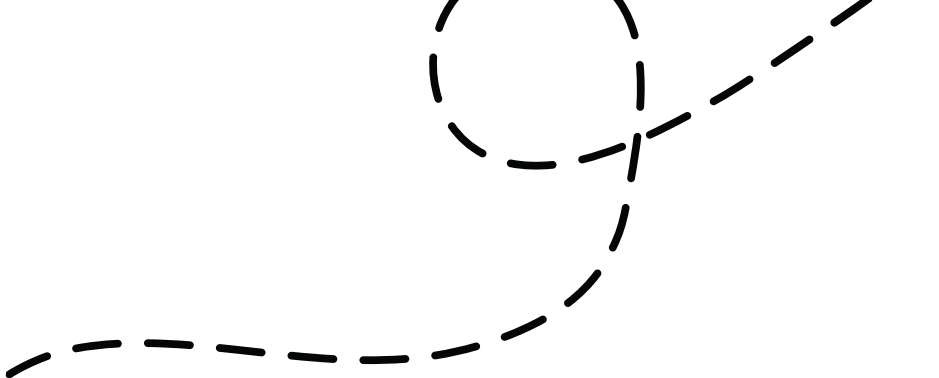
E-Learning Courses (Autumn Term)



Course Title	Pathway	Theme	Trainer	Release date
Stronger Together: Building Solidarity with Families of Neurodivergent and Disabled Children	Foundation	Learning Differences and Disabilities	Ealing Early Years Quality Partnership	29th September 2025
Purposeful Provision Part 2 - Enhanced Provision	Commissioned	Environment	James Tunnell	29th September 2025
Whole-Child Foundations: Personal, Social and Emotional Development	Foundation	Child Development	Ealing Early Years Quality Partnership	29th September 2025
The neuroscience of the Early Years: How do younger children's brains differ from older children's and what does this mean for how we should interact with them?	Commissioned	Child Development	Dr Gemma Goldenberg	29th September 2025
Equity Starts Early (Understanding racism and ableism in speech and language)	Commissioned	Race Equity & Anti-ableism	Warda Farah	29th September 2025



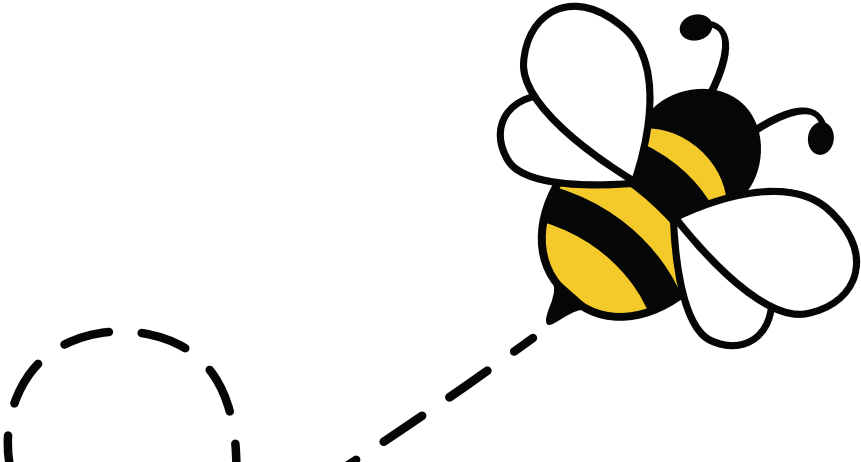
E-Learning Courses (Autumn Term)



Course Title	Pathway	Theme	Trainer	Release date
The Science behind outdoor play and learning: What does research evidence tell us about how the outdoors supports mental and physical health, learning and development?	Commissioned	Environments	Dr Gemma Goldenberg	29 th September
Understanding SEND and anti-racism	Commissioned	Race Equity and anti-ableism	Dr Abi Miranda	29 th September
Diverse Child Development (Part One and Part Two)	Commissioned	Child Development	Free to Learn Childminding	29 th September
Being a Play Responsive Educator	Commissioned	Play	Suzanne Axelsson	29 th September
Introducing Augmentative and Alternative Communication	Commissioned	Learning Differences and Disabilities	Ali Battye	29 th September



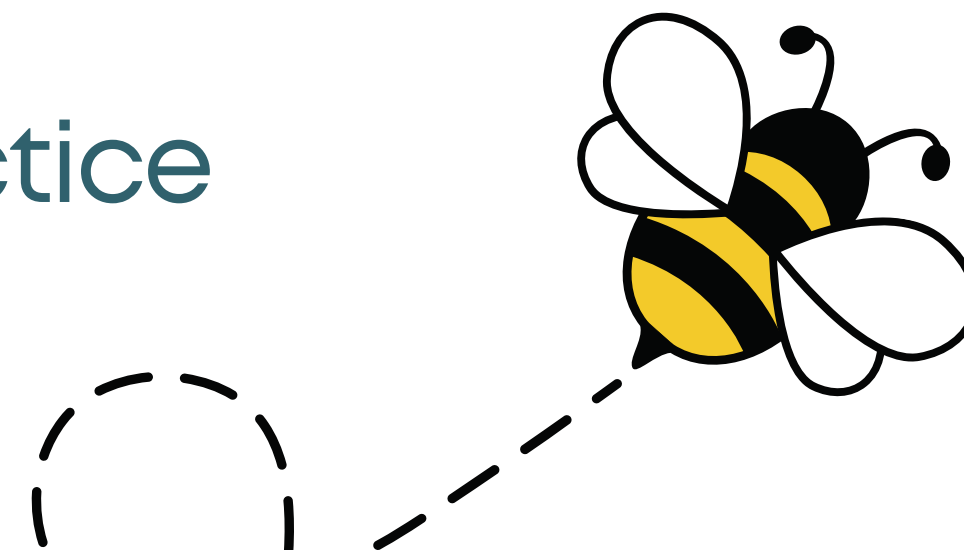
E-Learning Courses (Autumn Term)



Course Title	Pathway	Theme	Trainer	Release date
Connected Pathway: Challenging Parent x Carer Stereotypes	Connected	Learning Differences and Disabilities	Ealing Early Years Quality Partnership	29th September 2025
Storyteling in the Early Years	Commissioned	Storytelling	Olivia Corbin-Phillip	29th September 2025
Whole-Child Foundations: Communication and Language	Foundation	Child Development	Ealing Early Years Quality Partnership	5th January 2026
Whole-Child Foundations: Physical Development	Foundation	Child Development	Ealing Early Years Quality Partnership	5th January 2026
Sensemaking Sensory Development	Foundation	Child Development	Ealing Early Years Quality Partnership	5th January 2026
Nurturing and Enabling Neurodivergent Play: Part 1 and Part 2	Commissioned	Learning Differences and Disabilities	Max Alexander	5th January 2026



Neurodiversity & Disability Affirming Practice (Live & Online)



Neurodiversity & Disability Affirming Practice Series	Pathway	Theme	Trainer	Release date and details
Please note: this is a four-part online live course.				
Session One: Affirming Practices: understanding neurodiversity in early childhood <i>Building practices that embrace difference, not fix them.</i>	Foundation	Neurodiversity & Disability Affirming Practice	Ealing Early Years Quality Partnership	<p>This four-part live course will take place on:</p> <ul style="list-style-type: none">• Wednesday 17th September (Session One)• Wednesday 8th October (Session Two)• Wednesday 5th November (Session Three)• Wednesday 26th November (Session Four) <p>The course will take place via MS Teams: 6.30pm till 8.00pm</p> <p>You can book now at Ealing CPD Online.</p>
Session Two: Parent x Carer Solidarity in Neurodiversity Affirming Practice <i>Strength in connection, change through collaboration.</i>				
Session Three: Self-Directed Play and Diverse Development <i>Tuning into and trusting in children's play and learning</i>				
Session Four: The stories we tell: the power of strength's led documentation and goal setting <i>Meeting children where they are at.</i>				

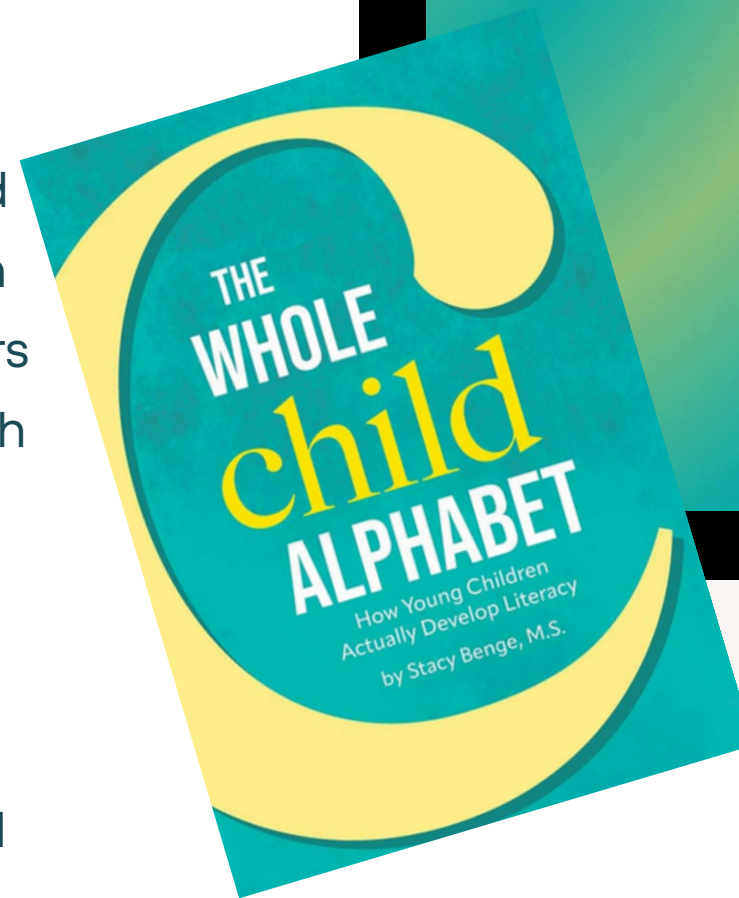
Meet our Experts



Stacy Bengé The Whole Child Alphabet

COMING SOON

Stacy Bengé, M.S. is an early childhood speaker who approaches learning in the early years with practicality and common sense. In addition to a Master of Science degree in Human Development and Family Studies, Stacy spent 10 years in the early childhood classroom teaching children ages birth to five. As she has for the past 20 years, Stacy shares her passion for child development with fellow early learning professionals with enlightening and informative presentations. Stacy is the author of *The Whole Child Alphabet: How Children Actually Develop Literacy* published by Exchange Press.



Live Sessions



Playful Mathematics

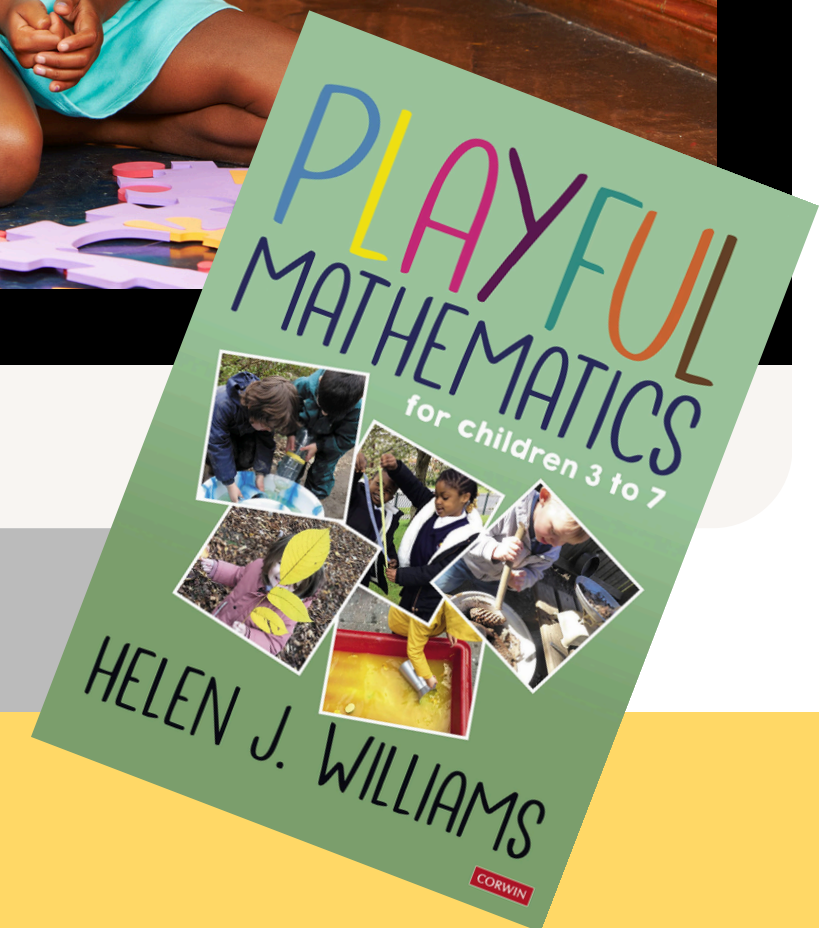
with Dr Helen J Williams

Dr Helen J Williams is an independent educational consultant specialising in the learning and teaching of primary mathematics. Her particular expertise is in Early Years and KS1 and she has a special interest in developing effective, research-based, playful opportunities for learning mathematics. She is a member of the Early Childhood Mathematics Group, the British Society for Research into Learning Mathematics, and the Association of Teachers of Mathematics.

30th September 2025

7pm till 8pm

Booking Open July 2025 via Ealing CPD Online



Meet our Experts



Gemma Goldenberg Take Action on Distraction

COMING SOON

Gemma is a child psychologist and education expert with 2 decades of teaching and leadership experience in nurseries and primary schools. Through conducting her own child development research, writing books and articles, delivering training and speaking at conferences, Gemma specialises in helping people use neuroscience and research informed strategies when working with young children.



Live Sessions



Being a Play Responsive Educator (Part Two)

with Suzanne Axelsson

Suzanne Axelsson works as a pedagogical consultant using experience, inspiration and research in listening, philosophy with children and Indigenous Knowledge to guide creating democratic learning and play spaces in early childhood education. She works on the EY program at the Department of Child and Youth Studies, Stockholm University, as well as in preschools with children and educators. As well as accessing her e-learning webinar on being a Play Responsive Educator, Suzanne will be delivering a live session for us later in 2025.

COMING
SOON



Meet our Experts

Kerry Murphy Early Years Consultant

Kerry is an early years consultant for Ealing, an associate lecturer at Goldsmiths University London and an author of several highly commended books.

Her focus is on advancing neurodiversity and disability affirming practice in the early years. She is also completing her Educational Doctorate at the University of Sheffield exploring how neuroaffirming training can mobilise early educators to be actively anti-ableist.

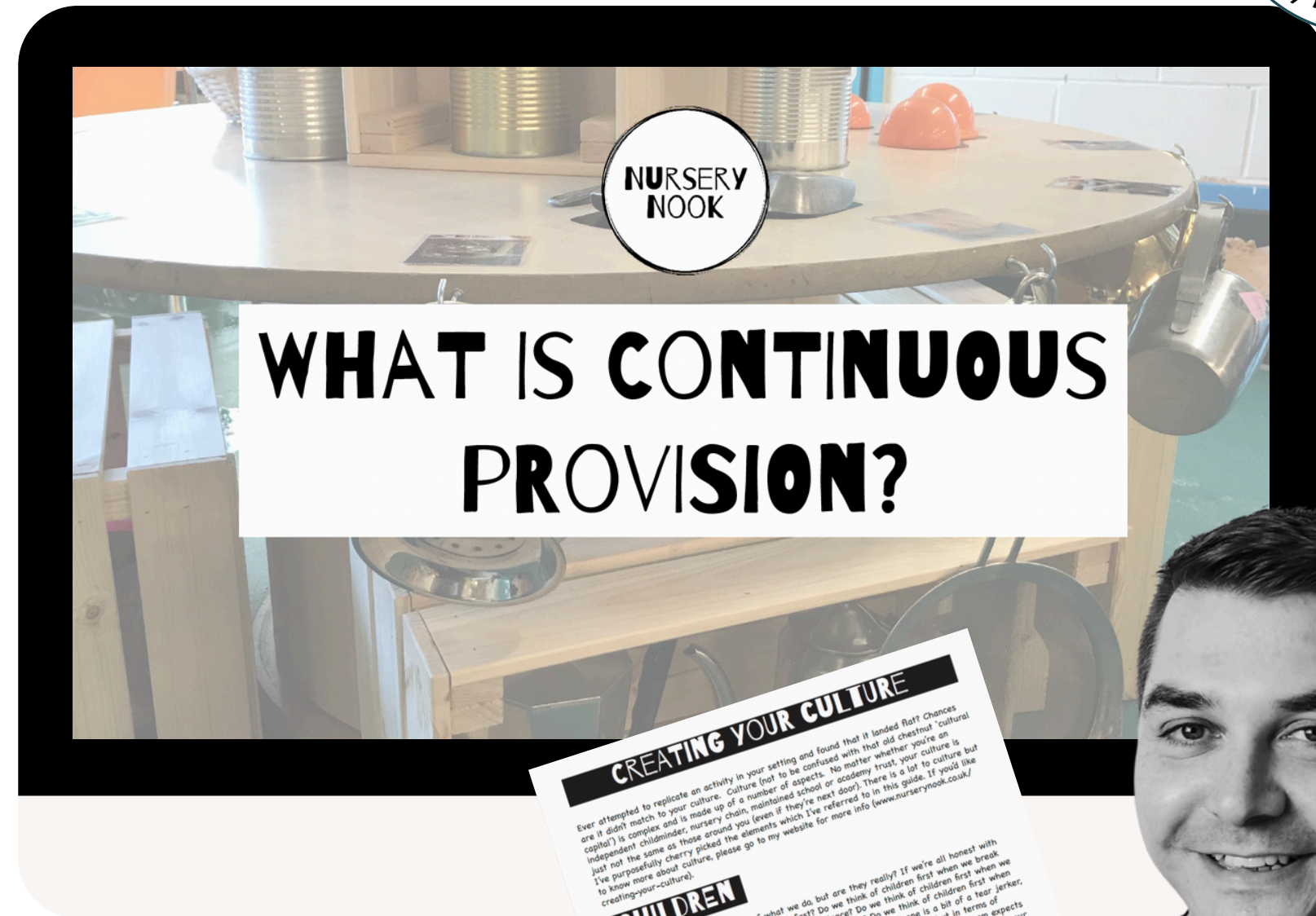


Meet our Experts

James Tunnell Purposeful Provision



James Tunnell is a coach and consultant working with Early Years settings around the world. He specialises in developing meaningful and purposeful provision in your setting that matches perfectly to your learners. As an ex-teacher, James has insight into developing and using provision alongside other forms of learning.



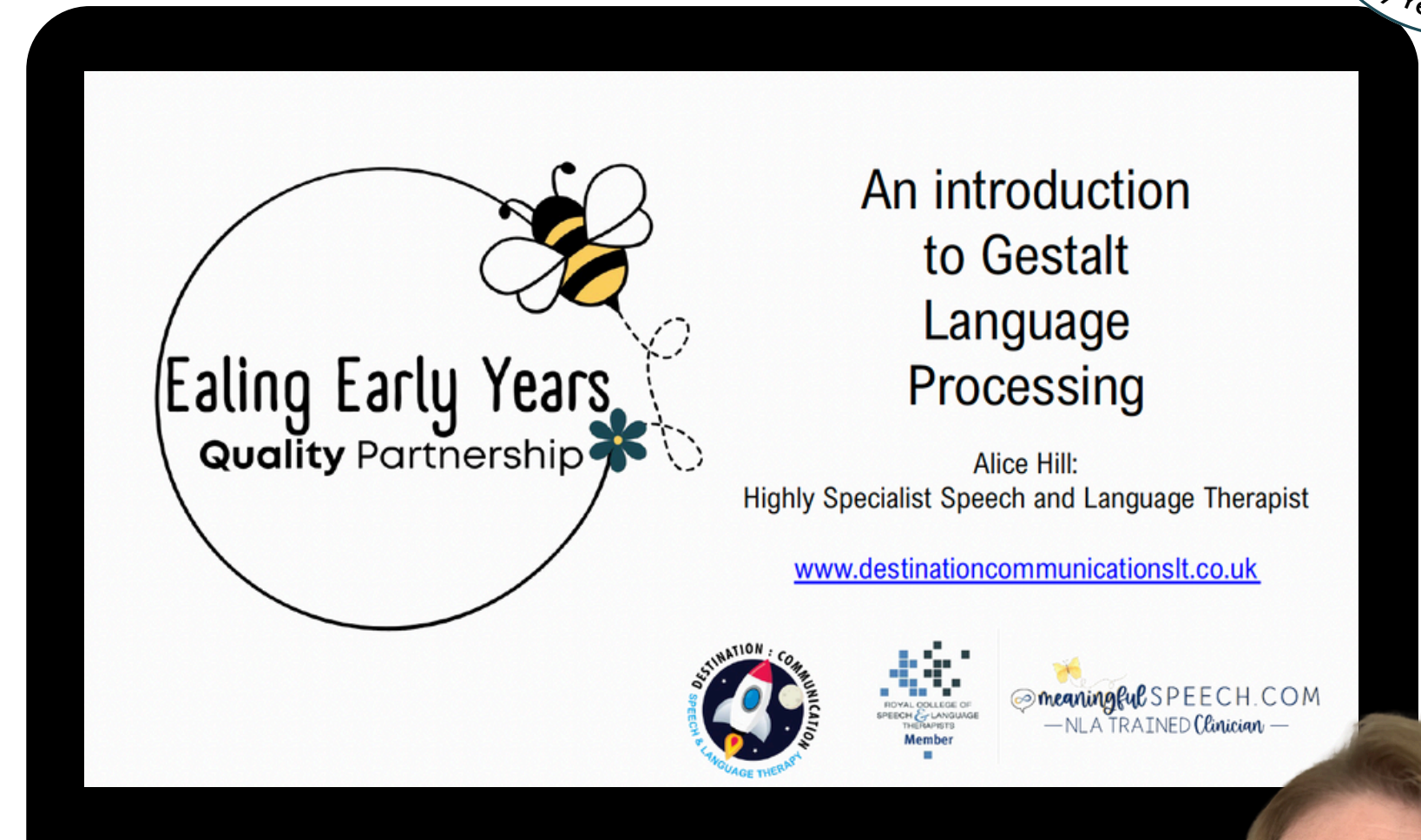
Meet our Experts



Alice Hill Gestalt Language Processing

COMING SOON

Alice Hill is an experienced Speech and Language Therapist, with a special interest in supporting Autistic children. Alice is committed to neurodiversity affirming practice, and is passionate about sharing information on and advocating for communication in all of it's forms.



Up and coming experts



Max Alexander
Play Radical



Stories with Liv
Storyteller



Dr Abi Miranda
Educational Psychologist



Ali Battye
Speech and Language
Therapist



David Cahn
Neurodiversity Affirming
Childminder



Warda Farah
Speech and Language Therapist



Millie Colwey
Childminder



Suzanne Axelsson
Play Specialist



Jen Foster
Behaviour Specialist



Dr Helen Williams
Maths Specialist





How do I use the platform?

We have created a demo for the platform that you can access by [clicking here](#).

We will also be hosting demo drop-ins in June 2025. Please book this via CPD online.

Thank you for choosing to train with Ealing Early Years Quality Partnership. We are committed to providing you with high-quality, engaging, and accessible learning experiences. Our goal is to support your professional development and ensure that you have the tools and knowledge needed to make a positive impact in the lives of children and families. **Please note:** the learning materials have been developed by the Ealing Early Years Quality Partnership and should **not** be duplicated or re-produced without permission.

The materials are for premium members only.

