



Extended Services

SING Forum
9th November 2016

Part of the School Effectiveness Service

Aim

- To support schools to address barriers to learning faced by pupils through provision of extended services

Objectives

- To support schools to **engage effectively with parents** to improve their involvement and support for their child's learning
- To support schools to provide **enrichment opportunities for pupils** outside of the curriculum to enhance their wellbeing and improve achievement
- To facilitate **schools working collaboratively** with each other and **external organisations** to improve pupil outcomes

Core Service	Buy Back
<ul style="list-style-type: none">• Support for all primary and special schools• Governed by strategic partnership of heads• Funded by DSG• Two year development plan focusing on priorities to address barriers to learning – identified by headteachers	<ul style="list-style-type: none">• Four day package of bespoke consultancy work for individual schools• Paid for by individual schools• Programme tailored to the needs of the school, e.g. parent workshops, fundraising, setting up new systems etc

Schools buying back ES support



- Beaconsfield Primary School
- Berrymede Infant School
- Berrymede Junior School
- Castlebar School
- Coston Primary School
- Derwentwater Primary School
- Dormers Wells Junior School
- Drayton Green Primary School
- Hambrough Primary School
- John Perryn Primary School
- Oldfield Primary School
- Our Lady of the Visitation Catholic Primary School
- Ravenor Primary School
- Stanhope Primary School
- Wood End Academy

Examples of ES support

Enrichment Activities for Pupils

Ealing Schools Counselling Partnership

Raising Aspirations Toolkit

Enrichment Activities for Pupils

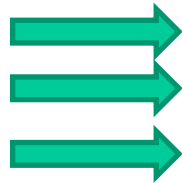


Aim: To ensure that all pupils, are able to experience a rich variety of activities both in and out of school

Projects:

- Information on new and unique providers of out of school and curriculum enhancement activities
- Ideas and examples of residential experiences and providers
- 'Let's Get Out and About' family activities newsletter produced before every school holiday (except Christmas)

In your packs



List of out of school providers

Examples of residential experiences

October edition of the Let's Get Out & About



Aim: to provide in-school counselling services to pupils, staff and parents in 13 primary schools (3 clusters)

Services: The partnership provides 1-1 counselling support, group interventions, e.g. friendship groups, lunchtime drop-ins for pupils, whole school staff training, e.g. impact of attachment in the classroom, access to evidence based interventions, e.g. babywatching. Heavily subsidised by the John Lyon's Charity.

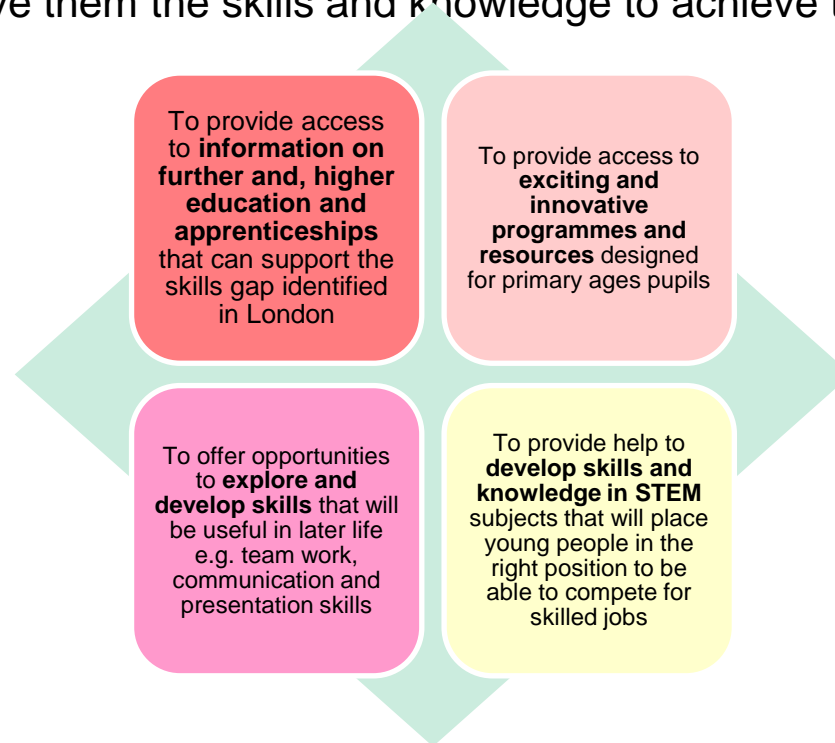
New training programme: Funded by the John Lyon's charity, the Partnership Manager now also offers a range of FREE training courses for staff from any Ealing school. Topics include attachment theory, active listening skills, friendship groups and building positive relationships with parents.

In your packs  **Summary of training courses and dates**

Raising Aspirations Toolkit

Aim: To raise the aspirations of pupils and parents about their future education and careers and give them the skills and knowledge to achieve these aspirations.

Objectives:



What: an Aspire Toolkit for use by staff in primary and special schools that includes a careers fair guide, links to organisations providing enterprise activities, resources for schools to support parents, visits to higher / further education organisations.

<https://www.egfl.org.uk/school-effectiveness/extended-schools/raising-aspirations-event>

- Gatekeeping reports, feedback to quadrants, school visit, events and emails from the team

Sarah Thompson
Extended Services Adviser
E. sthompson@ealing.gov.uk
T. 020 8825 7372

Maria Wright
Extended Services Locality
Coordinator (GNP & Acton)
E. mwright@ealing.gov.uk

Libby Giarraputo
Extended Services Locality
Coordinator (Ealing)
E. lgarraputo@ealing.gov.uk

Sarah Jay (maternity leave August 16)
Extended Services Locality
Coordinator (Southall)
E. sjay@ealing.gov.uk