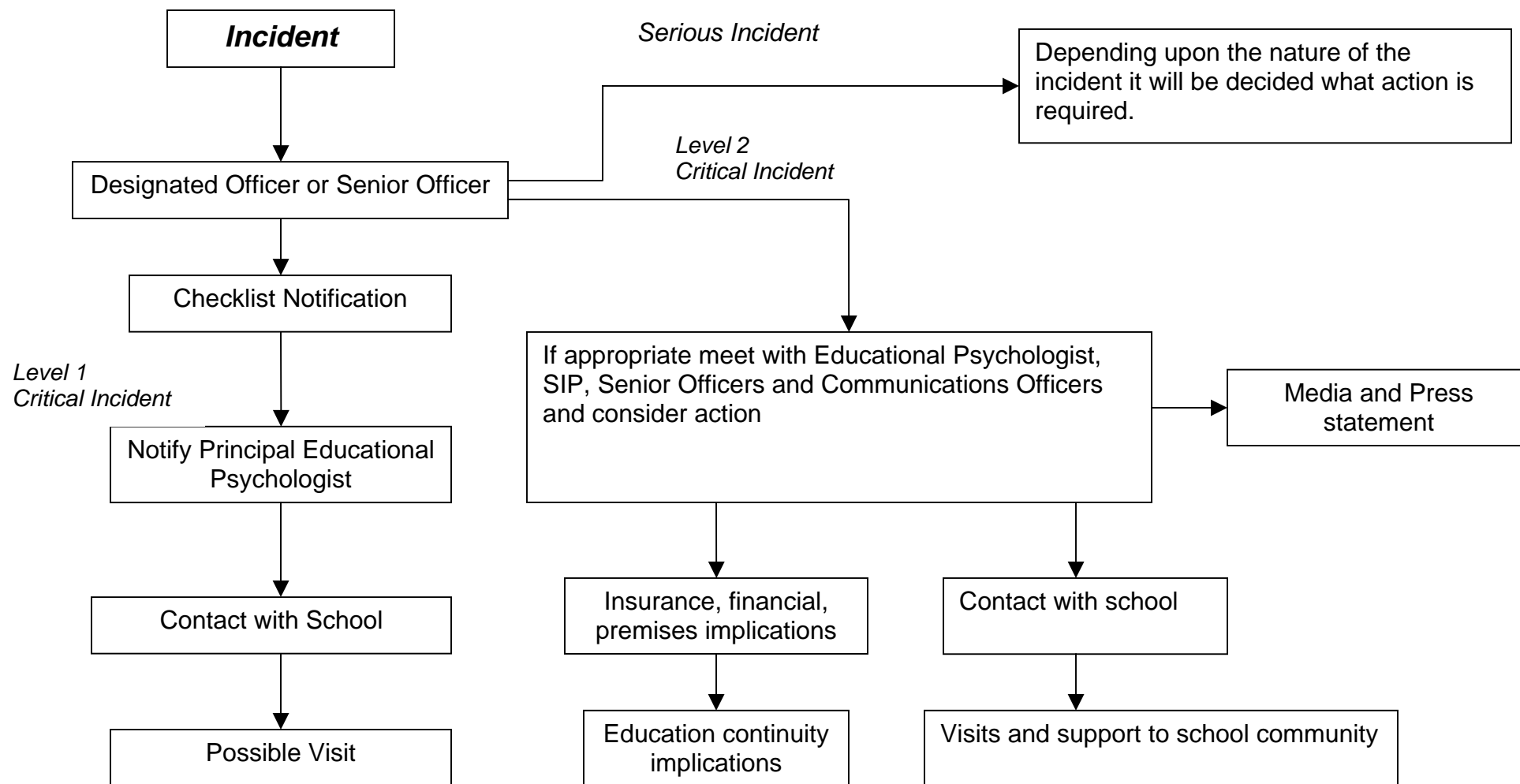


## SCHOOLS SERVICE'S RESPONSE TO CRITICAL INCIDENTS



### LEVEL 1 CRITICAL INCIDENT

A critical incident, which may include a fatality (but not to a member of the school community) and where the incident is not the responsibility of LA/school (e.g. incident related to another school group at the same centre).

### LEVEL 2 CRITICAL INCIDENT

A critical incident, which may include fatality or serious injury to one or more members of the school community or where the actions of a member or members of the school community have caused a serious incident and / or fatality.