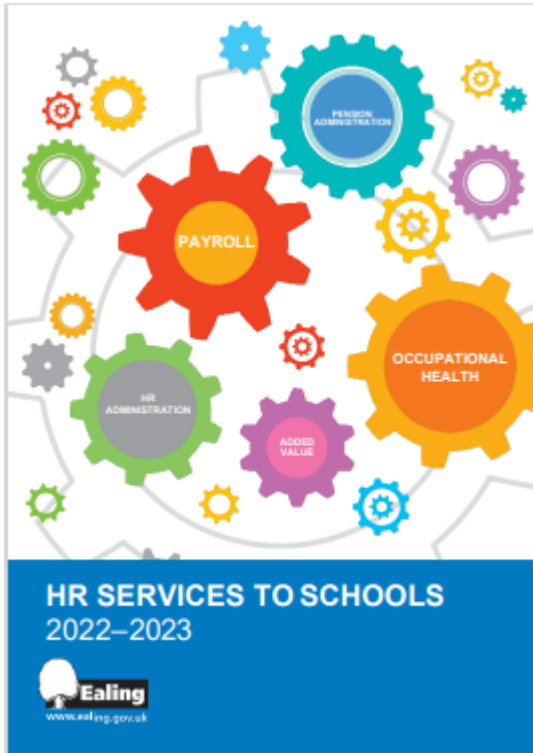


This service is available for Academies and Maintained schools

Description:

Our in house team manage all aspects of staff pension schemes on your behalf, including administration of automatic enrolment, reporting and annual returns. We have extensive experience in managing the Local Government Pension Scheme (LGPS) and the Teachers' Pension Scheme and can provide expert support and guidance.



Year Financial year 2022/23

Benefits

Benefits of this service include:

- Automated annual returns for LGPS and Teachers Pensions
- Automated monthly data collection report to Teachers Pensions
- Automated monthly report for LGPS
- Management of active, deferred and pensions in payment (LGPS)
- Administration of the Teachers' Pension Scheme , starters, leavers and year end information supplied to TPS includes Teachers Annual Return (TAR) and TR17
- Completion of all forms required by teachers pensions
- Automatic enrolment compliance
- Communications to staff, monthly monitoring of workforce and managing all aspects of staff opting in or opting out of the pension scheme.

The administration service covers all aspects of the LGPS an employee may encounter from commencing their employment to leaving or retiring from the service, together with payment of any death grant and ongoing dependant pension benefits the scheme provides.

These include but are not limited to:

- Starters
- Contractual or personal changes during employment
- Leavers
- Refunds of contribution payments
- Redundancy estimates and payments
- Flexible, ill health and early retirement estimates
- Payment of lump sum retirement grants and ongoing pension payments
- Death grant payments
- Dependant and children's pension payments
- Applications for ill health retirement or early release of pension benefits due to ill health or on compassionate grounds before normal retirement age.

Compulsory charges imposed - schools who use external payroll providers will be charged for pensions administration.

Additional / buy back services

Schools who use an external pay roll provider will be charged for the pensions administration we carry out on their behalf.

Office hours:

Monday to Friday, 9am to 5pm.

Planned improvements:

Ongoing process of continued service improvement.

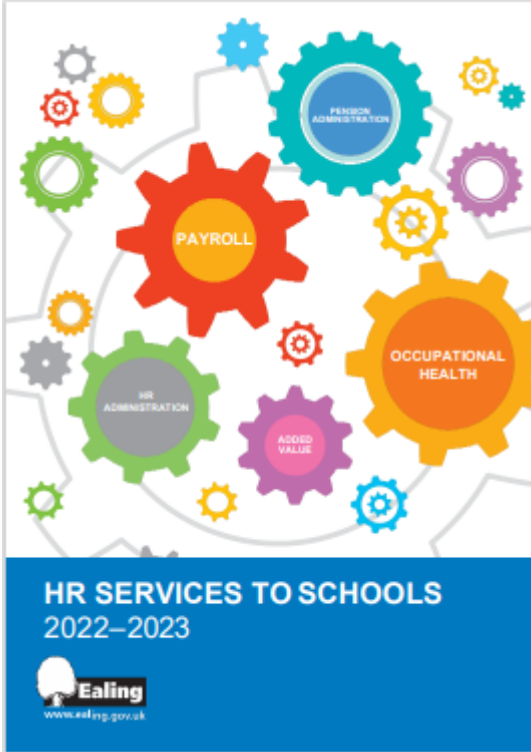
Service directors:

Liz Chiles

More detailed information:

For more detailed information on what the Pensions' Administration service includes, please refer to the HRSSC brochure.

Additional charges will apply for non-compliance. For further information, please refer to the HRSSC brochure.



Related content:

[iTrent](#)

[Pensions](#)

Provider:

HR Shared Service Centre, Corporate Resources.

Contact:

- **Payroll and pensions HRSSC**, HR shared service centre (HRSSC): genpayroll@ealing.gov.uk 020 8825 9000

Additional contact information

HRSSC 020 8825 9000, option 3, option 5

Email: pensionsmonitoring@ealing.gov.uk

Further details:

You are currently not logged in. [Login here](#) for further details.

Was this page useful?

- [Yes](#)
- [Neutral](#)
- [No](#)

Last updated: 15 Feb 2022
